

# KOMATSU

## **D85EX-18** **D85PX-18**

*EU Stage IV Engine*

**CRAWLER DOZER**

**PRELIMINARY**



# D85

#### **ENGINE POWER**

199 kW / 267 HP @ 1.900 rpm

#### **OPERATING WEIGHT**

D85EX-18: 30.190 kg  
D85PX-18: 28.940 kg

#### **BLADE CAPACITY**

Sigmadozer®:  
D85EX-18: 7,2 m<sup>3</sup>  
Semi-U tilt dozer:  
D85EX-18: 7,0 m<sup>3</sup>  
Straight tilt dozer:  
D85PX-18: 5,9 m<sup>3</sup>

# Walk-Around

## OUTSTANDING PRODUCTIVITY & FUEL ECONOMY:

**Up to 15% higher productivity with new Sigmadozer® blade.**

**Up to 5% less fuel consumption with new engine, power train and control systems.**

### *High productivity & low fuel consumption*

- NEW** • Low consumption EU Stage IV engine
- NEW** • Automatic transmission
- NEW** • Selectable working modes
- NEW** • Adjustable Eco-gauge and auto idle stop
- NEW** • “3L Speed” for high-speed leveling
- Hydrostatic cooling fan with reverse cleaning mode

### *Optimized work equipment*

- NEW** • Sigmadozer® blade with hydraulic pitch
- Straight tilt & Semi-U tilt dozer blades
- Multishank parallelogram ripper



*images may display optional equipment or specifications not available in your area.*

### First-Class Operator Comfort

- NEW** • Integrated ROPS cab
- NEW** • Automatic air conditioning
- NEW** • Integrated rear view camera system
- NEW** • Upgraded quiet and comfortable cab
- NEW** • Fully adjustable air suspension seat
- Superior visibility on blade and ripper
- Low noise and vibrations

### State of the art controls

- NEW** • Large TFT colour multi monitor
- NEW** • Gearshift preset function
- NEW** • Engine Shutdown Secondary Switch
- Hydrostatic steering system

### Reliability & Maintenance

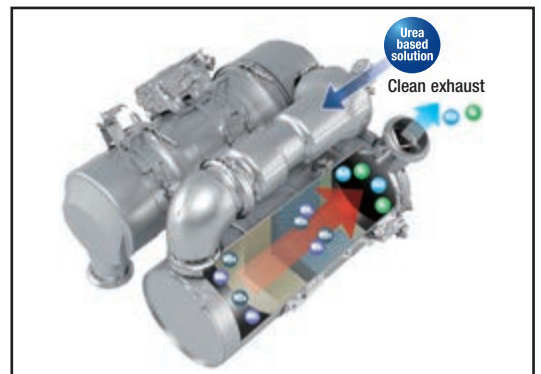
- NEW** • Multi-function monitor with troubleshooting function
- NEW** • Easy access AdBlue® tank
- Sturdy, rugged design

### KOMTRAX™

- NEW** • Increased operational data and fuel savings
- NEW** • Integrated communication antenna



New, low consumption Komatsu SAA6D125E-7 engine for greatly increased productivity.



New heavy-duty after treatment system combines the Komatsu Diesel Particulate Filter (KDPF) and Selective Catalytic Reduction (SCR) to fully comply with EU Stage IV emissions.



Fully air suspended operator station ensures maximum operator comfort and an excellent view on the blade.



Eco gauge, eco guidance and the new auto idle stop help to further reduce consumption.



Complimentary maintenance program for customers

## ENGINE

|                             |   |
|-----------------------------|---|
| Model                       | Komatsu SAA6D125E-7   |
| Type                        | Common rail direct injection, water-cooled, emissionised, turbocharged, after-cooled diesel |
| Engine power                |   |
| at rated engine speed       | 1.900 rpm   |
| ISO 14396                   | 199 kW/267 HP   |
| ISO 9249 (net engine power) | 197 kW/264 HP   |
| No. of cylinders            | 6   |
| Bore x stroke               | 125 x 150 mm  |
| Displacement                | 11,04 l   |
| Fan drive type              | Hydraulic, reversible   |
| Engine emissions            | Fully complies with EU Stage IV exhaust emission regulations                                |

## UNDERCARRIAGE

|                             |  |
|-----------------------------|--|
| Suspension                  | Oscillating equaliser bar and pivot shaft      |
| Track roller frame          | Monocoque, large section, durable construction |
| Number of shoes (each side) |  |
| D85EX-18                    | 41   |
| D85PX-18                    | 45   |

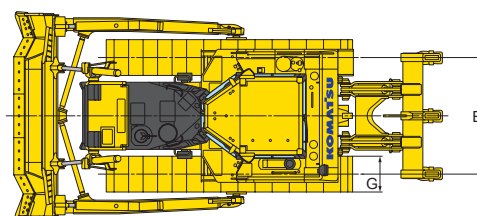
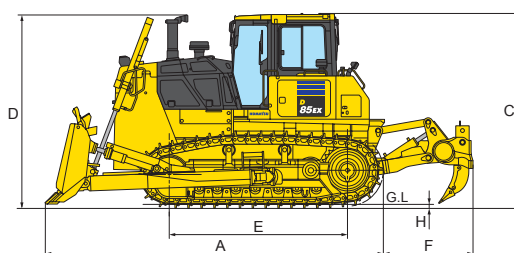
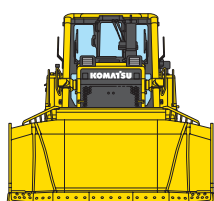
## TORQFLOW TRANSMISSION

|   |                  |
|---|------------------|
| Type                                    | Komatsu TORQFLOW |
| Speed ranges (forwards/backwards)       | 4/4              |
| Max. travel speeds (forwards/backwards) | 10,0/12,7        |

## DIMENSIONS

|   | D85EX-18<br>Sigmadozer®<br>with multi-shank ripper | D85EX-18<br>Semi-U<br>with multi-shank ripper  | D85PX-18<br>Straight Tilt<br>with long drawbar |
|---|--|--|--|
| A | 5.810 mm   | 5.820 mm                                       | 6.025 mm                                       |
| B | 2.000 mm   | 2.000 mm                                       | 2.250 mm                                       |
| C | 3.322 mm   | 3.322 mm                                       | 3.322 mm                                       |
| D | 3.290 mm   | 3.290 mm                                       | 3.290 mm                                       |
| E | 3.050 mm   | 3.050 mm                                       | 3.480 mm                                       |
| F | 1.515 mm* <sup>1</sup> /1.545 mm* <sup>2</sup>     | 1.515 mm* <sup>1</sup> /1.545 mm* <sup>2</sup> | 410 mm* <sup>3</sup>                           |
| G | 610 mm   | 610 mm   | 910 mm   |
| H | 72 mm  | 72 mm  | 72 mm  |

\*1 Multi-shank ripper \*2 Variable multi-shank ripper \*3 Long drawbar



Ground clearance: 450 mm

## DOZER EQUIPMENT

|                                      | Overall length with blade | Blade capacity     | Blade width x height | Max. lift above ground | Max. drop below ground | Max. tilt adjustment | Additional weight |
|--------------------------------------|---------------------------|--------------------|----------------------|------------------------|------------------------|----------------------|-------------------|
| D85EX-18<br>Strengthened Sigmadozer® | 5.810 mm                  | 7,2 m <sup>3</sup> | 3.575 x 1.665 mm*    | 1.215 mm               | 590 mm                 | 700 mm               | 4.030 kg          |
| D85EX-18<br>Strengthened Semi-U tilt | 5.820 mm                  | 7,0 m <sup>3</sup> | 3.635 x 1.605 mm     | 1.175 mm               | 530 mm                 | 735 mm               | 3.780 kg          |
| D85PX-18<br>Straight tilt            | 6.025 mm                  | 5,9 m <sup>3</sup> | 4.355 x 1.400 mm     | 1.230 mm               | 560 mm                 | 500 mm               | 3.140 kg          |

Blade capacities are based on the SAE recommended practice J1265.

\* including spill guard