

## ENGINE

Model ..... Komatsu SAA6D114E-5  
 Type ..... Common rail direct injection, water-cooled, emissionised, turbocharged, after-cooled diesel

Engine power  
 at rated engine speed ..... 1.950 rpm  
 ISO 14396 ..... 164 kW / 219 HP  
 ISO 9249 (net engine power) ..... 153 kW / 205 HP

No. of cylinders ..... 6  
 Bore x stroke ..... 114 x 144,5 mm  
 Displacement ..... 8,85 ltr  
 Governor ..... All-speed, electronic

Lubrication system  
 Method ..... Gear pump, force lubrication  
 Filter ..... Full flow

## TORQFLOW TRANSMISSION

Type ..... Komatsu TORQFLOW  
 Torque converter ..... 3-element, 1-stage, 2-phase, water-cooled, with automatic lock-up function  
 Transmission ..... Planetary gear, multiple-disc clutch, hydraulically actuated, force-lubricated  
 Gearshift lock lever and neutral safety switch prevent accidental starts.

## MAX. TRAVEL SPEEDS

	Forward	Reverse
1st	3,6 km/h	4,5 km/h
2nd	5,6 km/h	6,7 km/h
3rdL	7,3 km/h	8,7 km/h
3rd	11,3 km/h	13,6 km/h

## STEERING SYSTEM

Type ..... Hydrostatic Steering System (HSS)  
 Steering control ..... PCCS-lever  
 Service brakes ..... Wet, multiple-disc, pedal-controlled, spring-actuated and hydraulically released

### Minimum turning radius (counter-rotation)

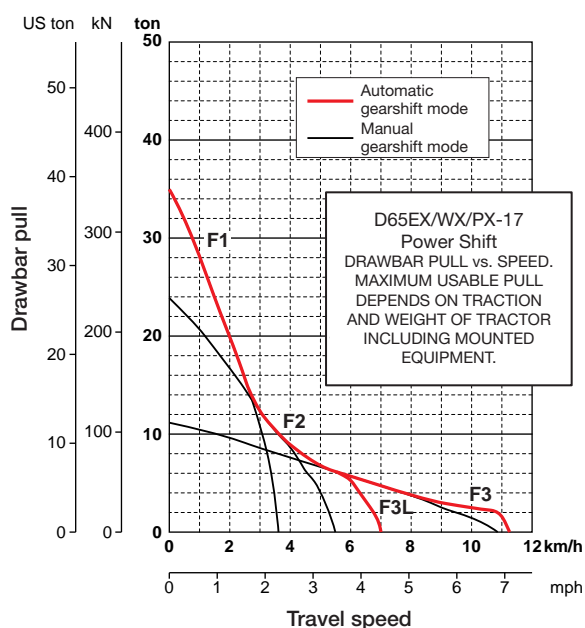
D65EX-17 with Sigmadozer® blade	1,9 m
D65EX-17 with INPAT blade	2,0 m
D65WX-17 with Sigmadozer® blade	2,1 m
D65WX-17 with INPAT blade	2,0 m
D65PX-17 with straight tilt blade	2,2 m
D65PX-17 with INPAT blade	2,2 m

## FINAL DRIVE

Type ..... Spur gear, planetary gear, double-reduction  
 Sprocket ..... Segmented sprocket teeth are bolt-on for easy replacement

## SERVICE REFILL CAPACITIES

Fuel tank	415 ltr
Radiator	54 ltr
Engine oil	30 ltr
Torque converter, transmission, bevel gear, and steering system	53 ltr
Final drive (each side)	
D65EX-17	21 ltr
D65EX-17 with INPAT blade	27 ltr
D65WX-17	25 ltr
D65PX-17	25 ltr
Work equipment hydraulics	55 ltr



## ENVIRONMENT

Engine emissions ..... Fully complies with EU Stage IIIB and EPA Tier 4 interim exhaust emission regulations

### Noise levels

LwA external	108 dB(A) (2000/14/EC)
LpA operator ear	78 dB(A) (ISO 6396 dynamic test)

### Vibration levels (EN 12096:1997)\*

Hand/arm	≤ 2,5 m/s <sup>2</sup> (uncertainty K = 0,7 m/s <sup>2</sup> )
Body	≤ 0,5 m/s <sup>2</sup> (uncertainty K = 0,3 m/s <sup>2</sup> )

\* for the purpose of risk assessment under directive 2002/44/EC, please refer to ISO/TR 25398:2006.

# Specifications

## UNDERCARRIAGE

Suspension.....	Oscillating equaliser bar and pivot shaft
Track roller frame.....	Monocoque, large section, durable construction
Rollers and idlers.....	Lubricated track rollers
Tracks .....	PLUS link assembly
Track tension .....	Combined spring and hydraulic unit

### D65EX-17

Type of blade	Sigadozer®	INPAT
Number of track rollers (each side)	7	7
Number of shoes (each side)	42	42
Shoe width (standard)	610 mm	560 mm
Ground contact area*	36.234 cm <sup>2</sup>	33.264 cm <sup>2</sup>
Ground pressure	0,61 kg/cm <sup>2</sup>	0,68 kg/cm <sup>2</sup>
Track gauge	1.880 mm	2.050 mm
Length of track on ground	2.970 mm	2.970 mm

### D65WX-17

Type of blade	Sigadozer®	INPAT
Number of track rollers (each side)	7	7
Number of shoes (each side)	42	42
Shoe width (standard)	760 mm	760 mm
Ground contact area*	45.144 cm <sup>2</sup>	45.144 cm <sup>2</sup>
Ground pressure	0,50 kg/cm <sup>2</sup>	0,52 kg/cm <sup>2</sup>
Track gauge	2.050 mm	2.230 mm
Length of track on ground	2.970 mm	2.970 mm

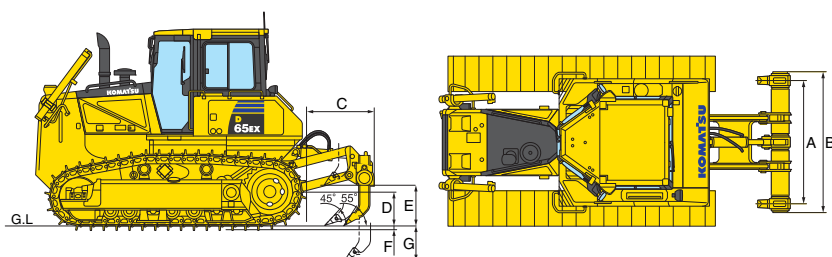
### D65PX-17

Type of blade	Straight tilt	INPAT
Number of track rollers (each side)	8	8
Number of shoes (each side)	45	45
Shoe width (standard)	915 mm	760 mm
Ground contact area*	59.932 cm <sup>2</sup>	49.780 cm <sup>2</sup>
Ground pressure	0,37 kg/cm <sup>2</sup>	0,46 kg/cm <sup>2</sup>
Track gauge	2.050 mm	2.230 mm
Length of track on ground	3.275 mm	3.275 mm

\* Including blade and ripper (EX/WX), steel cab, ROPS, hydraulic control unit, operator, standard equipment, rated capacity of lubricant, coolant, and full fuel tank.

## MULTISHANK RIPPER DIMENSIONS

A	1.900 mm
B	2.170 mm
C	1.230 mm
D	528 mm
E	640 mm
F	65 mm
G	590 mm



## OPERATING WEIGHT (APPR.)

Including blade and ripper (EX/WX), steel cab, ROPS, hydraulic control unit, operator, standard equipment, rated capacity of lubricant, coolant, and full fuel tank.

D65EX-17 with Sigadozer®.....	22.070 kg
D65EX-17 with INPAT .....	22.620 kg
D65WX-17 with Sigadozer®.....	22.660 kg
D65WX-17 with INPAT .....	23.520 kg
D65PX-17 with straight tilt.....	21.480 kg
D65PX-17 with INPAT .....	22.990 kg

## HYDRAULIC SYSTEM

Type .....	CLSS (closed-centre load sensing system)
All spool valves externally mounted beside the hydraulic tank.	
Main pump .....	Variable displacement piston pump
Maximum pump flow.....	248 ltr/min
Relief valve setting .....	285 kg/cm <sup>2</sup>

## NUMBER OF CYLINDERS × BORE

Type of blade	Sigadozer®	Straight tilt	INPAT
Blade lift	2 × 85 mm	2 × 85 mm	2 × 90 mm
Blade tilt	–	1 × 125 mm	1 × 130 mm
Blade tilt/pitch	2 × 125 mm	–	–
Blade angle	–	–	2 × 110 mm

## RIPPER EQUIPMENT

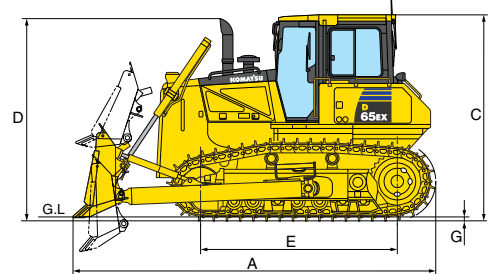
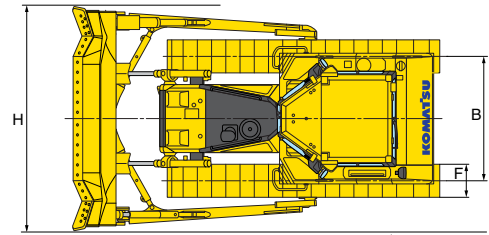
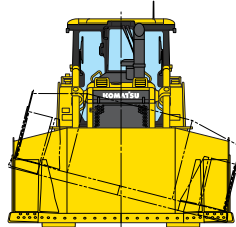
Multishank ripper

Type .....	Hydraulically controlled parallelogram ripper
No. of shanks .....	3
Weight (including hydraulic control unit) .....	1.770 kg
Beam length .....	2.170 mm
Maximum lift above ground.....	640 mm
Maximum digging depth .....	595 mm
Ripper cylinder .....	1 × 125 mm

## DIMENSIONS

	D65EX-17 Sigmadozer®	D65WX-17 Sigmadozer®	D65PX-17 Straight tilt
A	5.490 mm	5.500 mm	5.680 mm
B	1.880 mm	2.050 mm	2.050 mm
C	3.155 mm	3.155 mm	3.155 mm
D	3.080 mm	3.080 mm	3.080 mm
E	2.970 mm	2.970 mm	3.275 mm
F	610 mm	760 mm	915 mm
G	65 mm	65 mm	65 mm
H	3.410 mm	3.580 mm	3.970 mm

Ground clearance 415 mm (+ 65 mm grouser height)

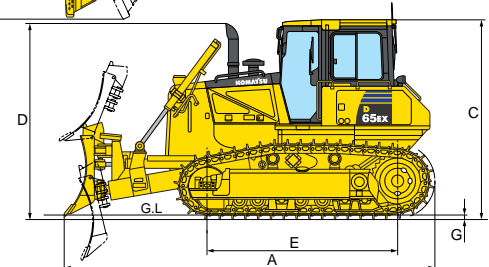
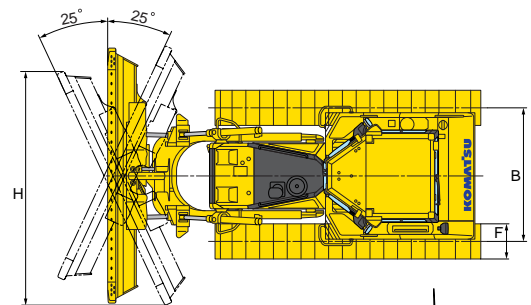
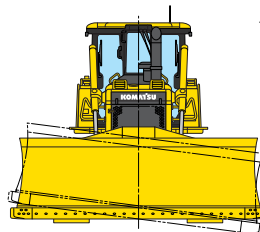


## DIMENSIONS

	D65EX-17 INPAT	D65WX-17 INPAT	D65PX-17 INPAT
A	5.790 mm	5.790 mm	5.790 mm
B	2.050 mm	2.230 mm	2.230 mm
C	3.155 mm	3.155 mm	3.155 mm
D	3.080 mm	3.080 mm	3.080 mm
E	2.970 mm	2.970 mm	3.275 mm
F	560 mm	760 mm	760 mm
G	65 mm	65 mm	65 mm
H	3.545 mm	3.670 mm	3.670 mm
H*	–	3.000 mm	3.000 mm

Ground clearance 415 mm (+ 65 mm grouser height)

\* Transport width with foldable INPAT blade



## DOZER EQUIPMENT

	Overall length with blade	Blade capacity	Blade width × height	Max. lift above ground	Max. drop below ground	Max. tilt adjustment	Additional weight
D65EX-17 Sigmadozer®	5.490 mm	5,61 m³	3.410 × 1.425 mm	1.135 mm	500 mm	870 mm	2.440 kg
D65EX-17 INPAT	5.790 mm	4,25 m³	3.870 × 1.235 mm	1.170 mm	695 mm	500 mm	2.960 kg
D65WX-17 Sigmadozer®	5.500 mm	5,90 m³	3.580 × 1.425 mm	1.135 mm	500 mm	770 mm	2.550 kg
D65WX-17 INPAT	5.790 mm	4,42 m³	4.010 × 1.235 mm	1.170 mm	695 mm	520 mm	* 2.990 kg
D65PX-17 Straight tilt	5.680 mm	3,69 m³	3.970 × 1.100 mm	1.130 mm	535 mm	890 mm	2.100 kg
D65PX-17 INPAT	5.790 mm	4,42 m³	4.010 × 1.235 mm	1.170 mm	695 mm	520 mm	* 2.990 kg

Blade capacities are based on the SAE recommended practice J1265.

\* Foldable INPAT blade (WX/PX): additional weight + 330 kg