

Specifications

ENGINE

Model	Komatsu SAA4D107E-2
Type	Common rail direct injection, water-cooled, emissionised, turbocharged, after-cooled diesel
Engine power	
at rated engine speed	2.000 rpm
ISO 14396	110 kW / 148 HP
ISO 9249 (net engine power)	104 kW / 139 HP
No. of cylinders	4
Bore × stroke	107 × 124 mm
Displacement	4,46 ltr
Battery	2 × 12 V / 140 Ah
Alternator	24 V / 90 A
Starter motor	24 V / 5,5 kW
Air filter type	Double element type with monitor panel dust indicator and auto dust evacuator
Cooling	Suction type cooling fan with radiator fly screen

HYDRAULIC SYSTEM

Type	HydrauMind. Closed-centre system with load sensing and pressure compensation valves
Main pump	2 variable displacement piston pumps supplying boom, arm, bucket and travel circuits
Maximum pump flow	452 ltr/min
Relief valve settings	
Implement	380 kg/cm ²
Travel	380 kg/cm ²
Pilot circuit	33 kg/cm ²

UNDERCARRIAGE

Construction	X-frame centre section with box section track frames
Track assembly	
Type	Fully sealed
Shoes (each side)	49
Tension	Combined spring and hydraulic unit
Rollers	
Track rollers (each side)	9
Carrier rollers (each side)	2

OPERATING WEIGHT (APPR.)

Triple grouser shoes	Operating weight	Ground pressure
600 mm	22.580 kg	0,47 kg/cm ²
700 mm	22.850 kg	0,41 kg/cm ²
800 mm	23.170 kg	0,37 kg/cm ²
900 mm	23.440 kg	0,33 kg/cm ²

Operating weight, including mono boom, 2,9 m arm, 0,8 m³ bucket, operator, lubricant, coolant, full fuel tank and the standard equipment.

SWING SYSTEM

Type	Electric drive
Swing reduction	Planetary gear
Swing brake	Electric brake
Swing lock	Mechanical disc brake
Swing speed	0 - 12,4 rpm
Swing torque	69 kNm

DRIVES AND BRAKES

Steering control	2 levers with pedals giving full independent control of each track
Drive method	Hydrostatic
Travel operation	Automatic 3-speed selection
Gradeability	70%, 35°
Max. travel speeds	
Lo / Mi / Hi	3,0 / 4,1 / 5,5 km/h
Maximum drawbar pull	20.600 kg
Brake system	Hydraulically operated discs in each travel motor

SERVICE REFILL CAPACITIES

Fuel tank	400 ltr
Coolant engine	23,0 ltr
Coolant Hybrid	6,0 ltr
Engine oil	18,0 ltr
Swing drive	6,5 ltr
Swing motor	1,6 ltr
Generator-motor	6,0 ltr
Hydraulic tank	132 ltr
Final drive (each side)	5,0 ltr

ENVIRONMENT

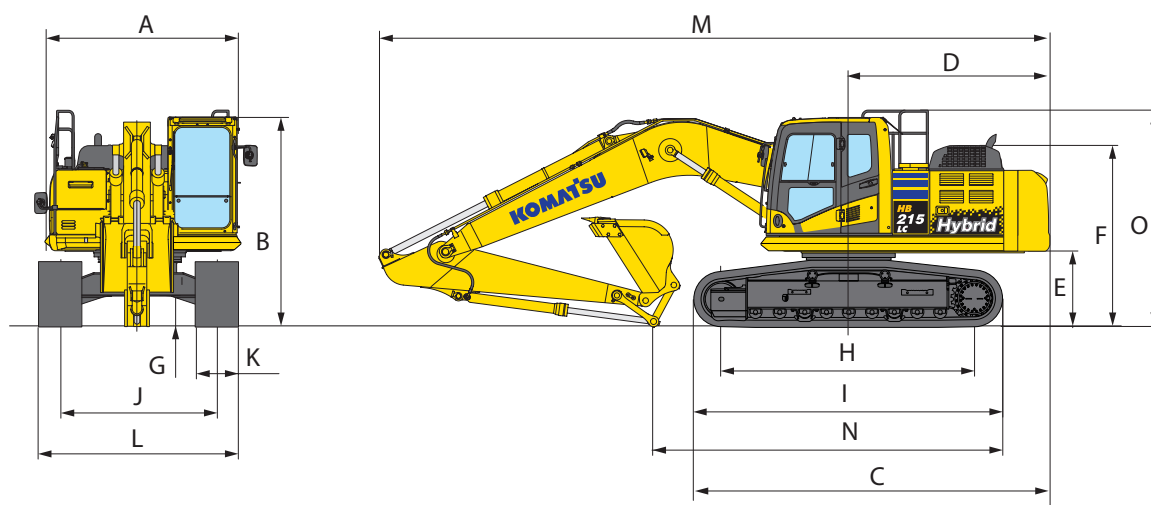
Engine emissions	Fully complies with EU Stage IIIB exhaust emission regulations
Noise levels	
LwA external	102 dB(A) (2000/14/EC Stage II)
LpA operator ear	69 dB(A) (ISO 6396 dynamic test)
Vibration levels (EN 12096:1997)*	
Hand/arm	≤ 2,5 m/s ² (uncertainty K = 0,51 m/s ²)
Body	≤ 0,5 m/s ² (uncertainty K = 0,30 m/s ²)

* for the purpose of risk assessment under directive 2002/44/EC, please refer to ISO/TR 25398:2006.

Dimensions & Performance Figures

MACHINE DIMENSIONS

A	Overall width of upper structure	2.705 mm
B	Overall height of cab	3.045 mm
C	Overall length of basic machine	5.135 mm
D	Tail length	2.910 mm
	Tail swing radius	2.940 mm
E	Clearance under counterweight	1.085 mm
F	Machine tail height	2.610 mm
G	Ground clearance	440 mm
H	Tumbler centre distance	3.655 mm
I	Track length	4.450 mm
J	Track gauge	2.380 mm
K	Track shoe width	600, 700, 800, 900 mm
L	Overall track width with 600 mm shoe	2.980 mm
	Overall track width with 700 mm shoe	3.080 mm
	Overall track width with 800 mm shoe	3.180 mm
	Overall track width with 900 mm shoe	3.280 mm



TRANSPORT DIMENSIONS

	Arm length	2,9 m
M	Transport length	9.625 mm
N	Length on ground (transport)	5.000 mm
O	Overall height (to top of handrail)	3.135 mm

BUCKET AND ARM FORCE

	Arm length	2,9 m
	Bucket digging force	14.100 kg
	Bucket digging force at PowerMax	15.200 kg
	Arm crowd force	10.300 kg
	Arm crowd force at PowerMax	11.000 kg

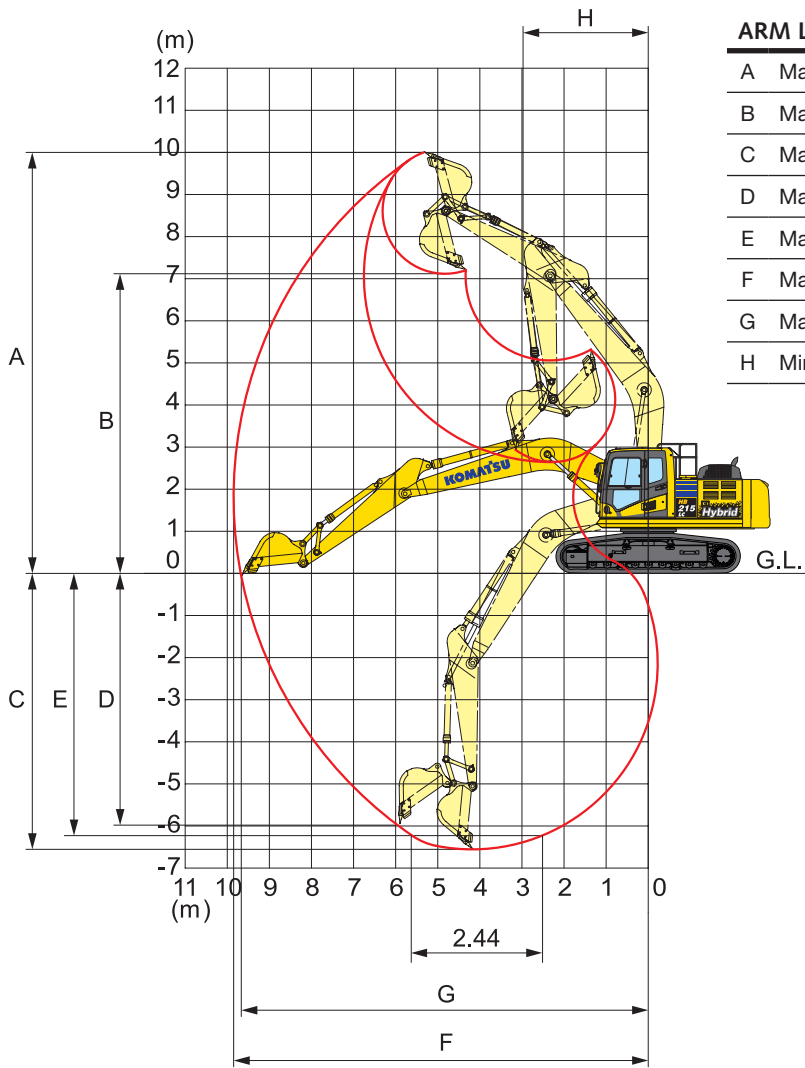
MAX. BUCKET CAPACITY AND WEIGHT

	Arm length	2,9 m
	Material weight up to 1,2 t/m ³	1,65 m ³ 1.150 kg
	Material weight up to 1,5 t/m ³	1,40 m ³ 1.025 kg
	Material weight up to 1,8 t/m ³	1,22 m ³ 925 kg

This table is for reference only. Buckets shown are not necessarily available. Please consult with your distributor for the correct selection of buckets and attachments to suit the application.

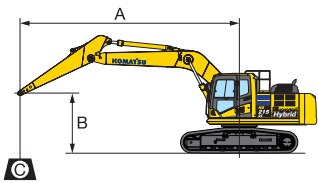


WORKING RANGE



ARM LENGTH		2,9 m
A	Max. digging height	10.000 mm
B	Max. dumping height	7.110 mm
C	Max. digging depth	6.620 mm
D	Max. vertical wall digging depth	5.980 mm
E	Max. digging depth of cut for 2,44 m level	6.370 mm
F	Max. digging reach	9.875 mm
G	Max. digging reach at ground level	9.700 mm
H	Min. swing radius	3.040 mm

LIFTING CAPACITY



- A - Reach from swing center
- B - Bucket hook height
- C - Lifting capacities

- Rating over front
- Rating over side
- Rating at maximum reach

With 700 mm shoes

Arm length	A		7,6 m		6,1 m		4,6 m		3,0 m		1,5 m	
	B											
 2,9 m	7,6 m	kg	*4.100	*4.100								
	6,1 m	kg	*3.850	*3.850		*6.550	5.800					
	4,6 m	kg	*3.850	*3.850	*5.250	4.050	*7.250	5.650	*8.050	*8.050		
	3,0 m	kg	*3.950	3.550	5.900	4.000	8.250	5.450	*10.400	8.200	*12.850	*12.850
	1,5 m	kg	*4.250	3.400	5.800	3.900	8.000	5.250	12.550	7.750		
	0,0 m	kg	*4.750	3.500	5.700	3.800	7.800	5.100	12.200	7.500	*7.500	*7.500
	-1,5 m	kg	5.650	3.750	5.650	3.800	7.750	5.000	12.100	7.400	*12.000	*12.000
	-3,0 m	kg	6.750	4.450			7.800	5.050	12.200	7.450	*18.500	14.150
-4,6 m	kg	*9.000	6.300					*10.750	7.650	*15.050	14.500	

* Load is limited by hydraulic capacity rather than tipping. Ratings are based on SAE Standard No. J1097.

Rated loads do not exceed 87% of hydraulic lift capacity or 75% of tipping load.

When lifting with additional equipment installed to the arm, please subtract the weight of all additional equipment from the values stated.