

SPECIFICATIONS



ENGINE

Model.....Komatsu SAA6D170E-5
 Type..... Common rail direct injection, water-cooled, cooled EGR, turbocharged, after-cooled diesel
 Engine power
 at rated engine speed 1.800 rpm
 ISO 14396..... 515 kW / 691 HP
 ISO 9249 (net engine power)..... 502 kW / 673 HP
 No. of cylinders..... 6
 Bore x stroke 170 x 170 mm
 Displacement..... 23,15 ltr
 Fan drive type..... Hydraulic



HYDRAULIC SYSTEM

Type..... Open-centre load-sensing system
 Number of selectable working modes 2
 Main pump..... Variable capacity piston pump
 Pumps for Boom, arm, bucket, swing, and travel circuits
 Maximum pump flow:
 Travel 2 x 494 ltr/min
 Swing 600 ltr/min
 Sub-pump for control circuit Gear pump
 Hydraulic motors:
 Travel 2 x axial piston motor with parking brake
 Swing 2 x axial piston motor with swing holding brake
 Relief valve settings Implement circuits
 Implement circuits..... 320 kg/cm²
 Travel circuit..... 350 kg/cm²
 Swing circuit..... 275 kg/cm²
 Pilot circuit..... 30 kg/cm²
 Hydraulic cylinders (no. of cylinders – bore x stroke):
 Backhoe
 Boom 2 – 225 mm x 2.390 mm
 Arm 1 – 250 mm x 2.435 mm
 Bucket PC1250-8..... 2 – 160 mm x 1.825 mm
 Bucket PC1250SP-8 2 – 160 mm x 1.950 mm
 Loading shovel
 Boom 2 – 225 mm x 1.960 mm
 Arm 2 – 185 mm x 1.765 mm
 Bucket..... 2 – 200 mm x 1.700 mm
 Bottom dump 2 – 160 mm x 435 mm



OPERATING WEIGHT (APPR.)

Operating weight, including boom, arm, bucket, operator, lubricant, coolant, full fuel tank and the standard equipment.
 PC1250SP-8: + full length roller guard



DRIVES AND BRAKES

Steering control 2 levers with pedals
 Drive method Fully hydrostatic
 Travel motor..... Axial piston motor, in-shoe design
 Reduction system Planetary double reduction
 Max. drawbar pull 686 kN/70.000 kgf
 Gradeability 70%
 Max. travel speeds
 Lo / Hi 2,1 / 3,2 km/h
 Service brake Hydraulic lock



UNDERCARRIAGE

Construction H-leg frame with box section track-frames
 Track assembly
 Type Fully sealed
 Shoes (each side) 48
 Tension..... Hydraulic
 Rollers
 Track rollers (each side)..... 8
 Carrier rollers (each side) 3



COOLANT AND LUBRICANT CAPACITY (REFILLING)

Fuel tank..... 1.360 ltr
 Radiator 142 ltr
 Engine oil..... 86 ltr
 Swing drive 2 x 24,3 ltr
 Hydraulic tank..... 670 ltr
 Final drive (each side) 21 ltr
 PTO case 13,5 ltr



SWING SYSTEM

Type Hydraulic motor
 Swing reduction Planetary gear
 Swing circle lubrication Grease-bathed
 Swing lock Oil disc brake
 Swing speed 5,5 rpm



ENVIRONMENT

Vibration levels (EN 12096:1997)*
 Hand/arm ≤ 2,5 m/s² (uncertainty K = 0,41 m/s²)
 Body..... ≤ 0,5 m/s² (uncertainty K = 0,20 m/s²)
 * for the purpose of risk assessment under directive 2002/44/EC, please refer to ISO/TR 25398:2006.

	BACKHOE				LOADING SHOVEL	
	PC1250-8		PC1250SP-8		PC1250SP-8	
Work equipment	9,1 m boom / 3,4 m arm / 5,0 m ³ bucket (SAE)		7,8 m boom / 3,4 m arm / 6,7 m ³ bucket (SAE)		5,3 m boom / 3,8 m arm / 6,5 m ³ bucket (SAE)	
Double grouser shoes	Operating weight	Ground pressure	Operating weight	Ground pressure	Operating weight	Ground pressure
700 mm	106.500 kg	1,39 kg/cm ²	110.700 kg	1,44 kg/cm ²	110.900 kg	1,45 kg/cm ²
1.000 mm	108.810 kg	0,99 kg/cm ²	-	-	-	-

TRANSPORT DIMENSIONS

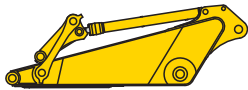
	Work equipment assembly weight
PC1250-8	25,3 ton
PC1250SP-8	27,7 ton

BOOM



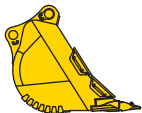
	Weight	Dimension
PC1250-8	11,2 ton	9.475 × 2.894 × 1.474 mm
PC1250SP-8	11,1 ton	8.170 × 3.095 × 1.474 mm

ARM



	Weight	Dimension
PC1250-8	5,9 ton	4.895 × 1.626 × 890 mm
Heavy Duty version	6,2 ton	4.895 × 1.626 × 890 mm
PC1250SP-8	6,4 ton	4.914 × 1.683 × 890 mm

BUCKET



	Weight	Dimension
PC1250-8	4,3 ton	2.700 × 2.100 × 2.050 mm
Heavy Duty version	5,5 ton	2.580 × 2.276 × 2.250 mm
PC1250SP-8	6,3 ton	2.527 × 2.420 × 2.520 mm

ARM CYLINDER



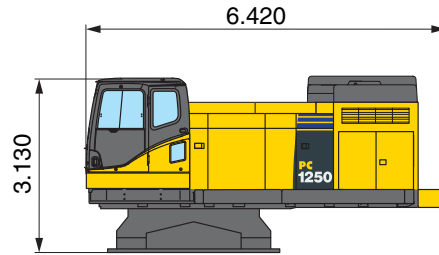
Length	3.950 mm
Weight	1,5 ton

BOOM CYLINDERS



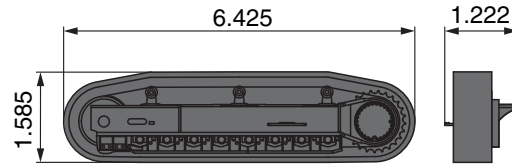
Length	3.810 mm
Weight	2,4 ton (2 × 1,2 ton)

UPPER STRUCTURE



Width	3.490 mm
Weight	36,4 ton

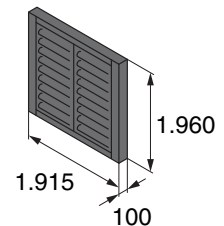
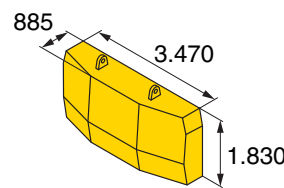
UNDERCARRIAGE



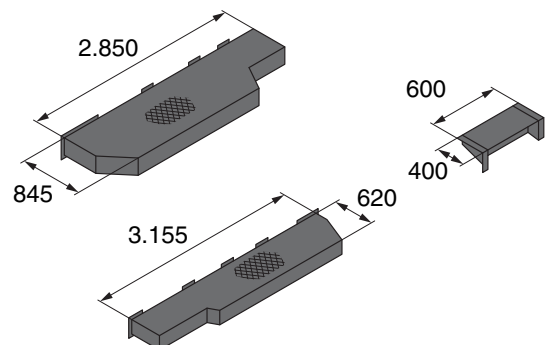
Weight	30 ton (2 × 15 ton)
Weight (with full length track roller guard)	30,9 ton (2 × 15,45 ton)

OTHERS

Weight	18,4 ton
--------	----------



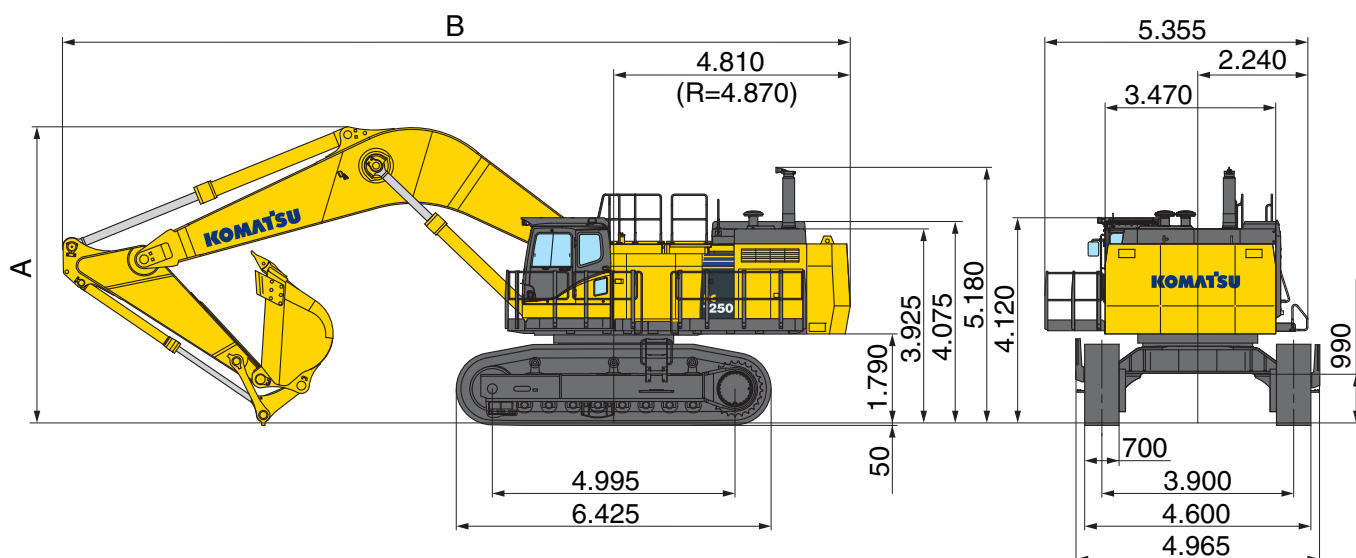
Weight	18,0 ton
--------	----------



Specifications including 9.100 mm boom, 3.400 mm arm, 5,0 m³ bucket, 700 mm double grouser shoes

MACHINE DIMENSIONS

BACKHOE



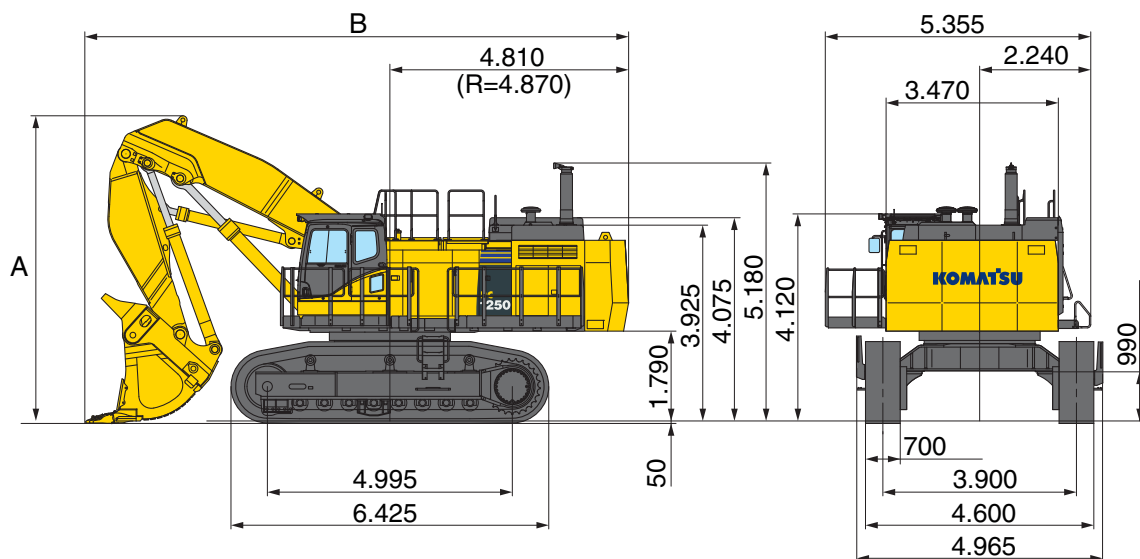
MACHINE DIMENSIONS		PC1250-8			PC1250SP-8
Boom		9,1 m			7,8 m
Arm		3,4 m	4,5 m	5,7 m	3,4 m
A	Overall height	6.040 mm	6.460 mm	6.990 mm	6.265 mm
B	Overall length	16.020 mm	16.050 mm	15.840 mm	14.790 mm

BUCKET AND ARM FORCE		PC1250-8			PC1250SP-8
Boom		9,1 m			7,8 m
Arm		3,4 m	4,5 m	5,7 m	3,4 m
Bucket digging force (SAE)		422 kN/43.000 kgf	422 kN/43.000 kgf	343 kN/35.000 kgf	502 kN/51.200 kgf
Arm crowd force (SAE)		392 kN/40.000 kgf	327 kN/33.300 kgf	281 kN/28.700 kgf	395 kN/40.300 kgf
Bucket digging force (ISO)		479 kN/48.800 kgf	479 kN/48.800 kgf	389 kN/39.700 kgf	570 kN/58.100 kgf
Arm crowd force (ISO)		412 kN/42.000 kgf	337 kN/34.400 kgf	286 kN/29.200 kgf	412 kN/42.000 kgf

MAX. BUCKET CAPACITY AND WEIGHT						
PC1250-8 / 9,1 m MONO BOOM						
Arm length	3,4 m		4,5 m		5,7 m	
Material weight up to 1,2 t/m ³	8,36 m ³	6.200 kg	7,03 m ³	5.550 kg	4,91 m ³	4.475 kg
Material weight up to 1,5 t/m ³	7,10 m ³	5.575 kg	5,98 m ³	5.025 kg	4,18 m ³	4.125 kg
Material weight up to 1,8 t/m ³	6,17 m ³	5.125 kg	5,20 m ³	4.625 kg	3,63 m ³	3.850 kg
PC1250SP-8 / 7,8 m MONO BOOM						
Arm length	3,4 m		-		-	
Material weight up to 1,2 t/m ³	9,93 m ³	8.075 kg				
Material weight up to 1,5 t/m ³	8,43 m ³	7.350 kg				
Material weight up to 1,8 t/m ³	7,32 m ³	6.800 kg				

Max. capacity and weight have been calculated according to EN474-5:2006+A1:2009. Please consult with your distributor for the correct selection of buckets and attachments to suit the application.

LOADING SHOVEL



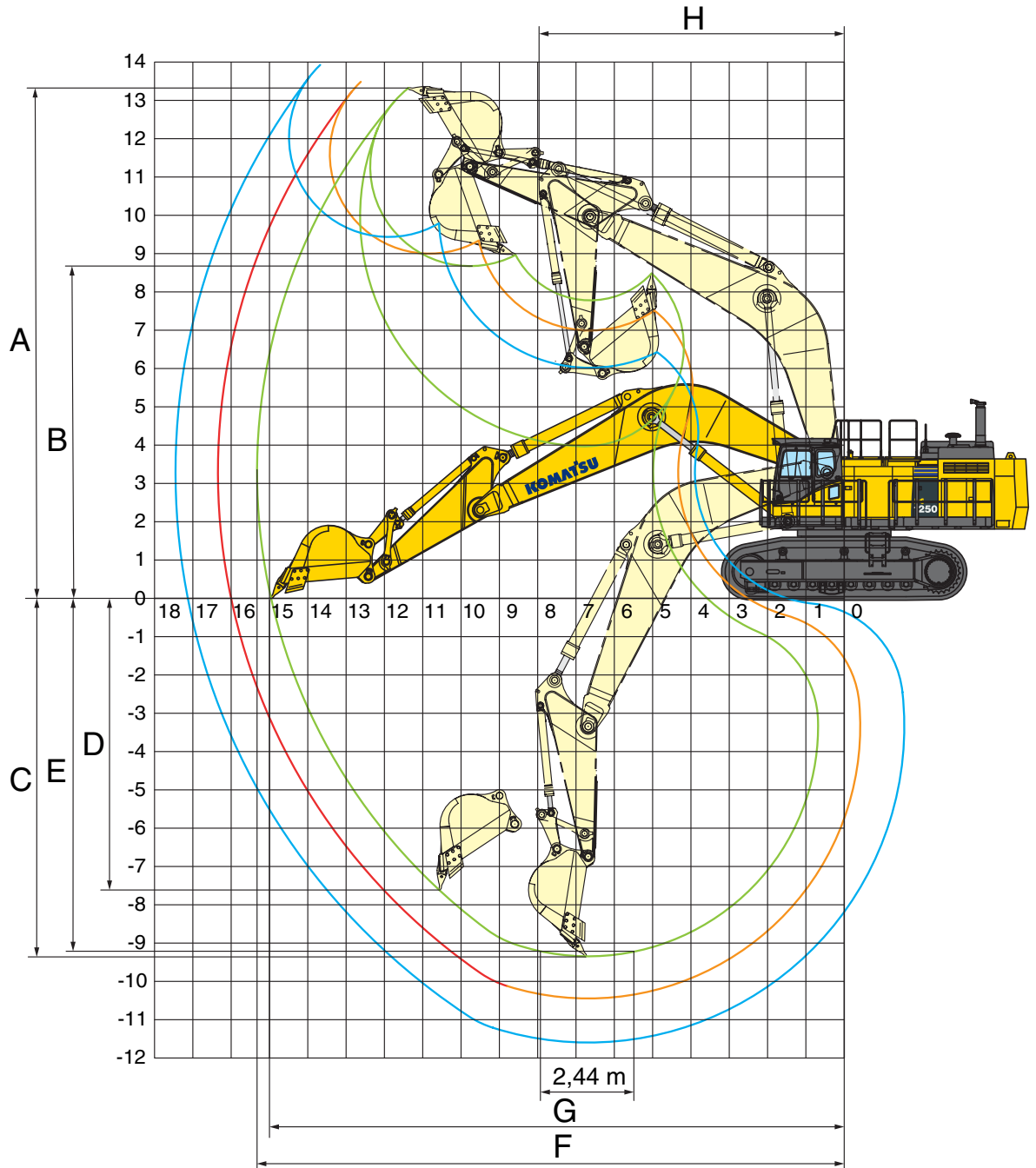
MACHINE DIMENSIONS WITH 6,5 m ³ BOTTOM DUMP BUCKET		
A	Overall height	6.200 mm
B	Overall length	10.940 mm

BUCKET AND ARM FORCE		
	Bucket digging force (ISO)	579 kN/59.000 kgf
	Arm crowd force (ISO)	608 kN/62.000 kgf

BUCKET SELECTION		
	Bucket type	Bottom dump
	Bucket capacity (heaped) (ISO 7451)	6,5 m ³
	Bucket width (incl. side shrouds)	2.700 mm
	Bucket weight	9.730 kg
	No. of teeth	6
	Recommended uses	General purpose digging and loading

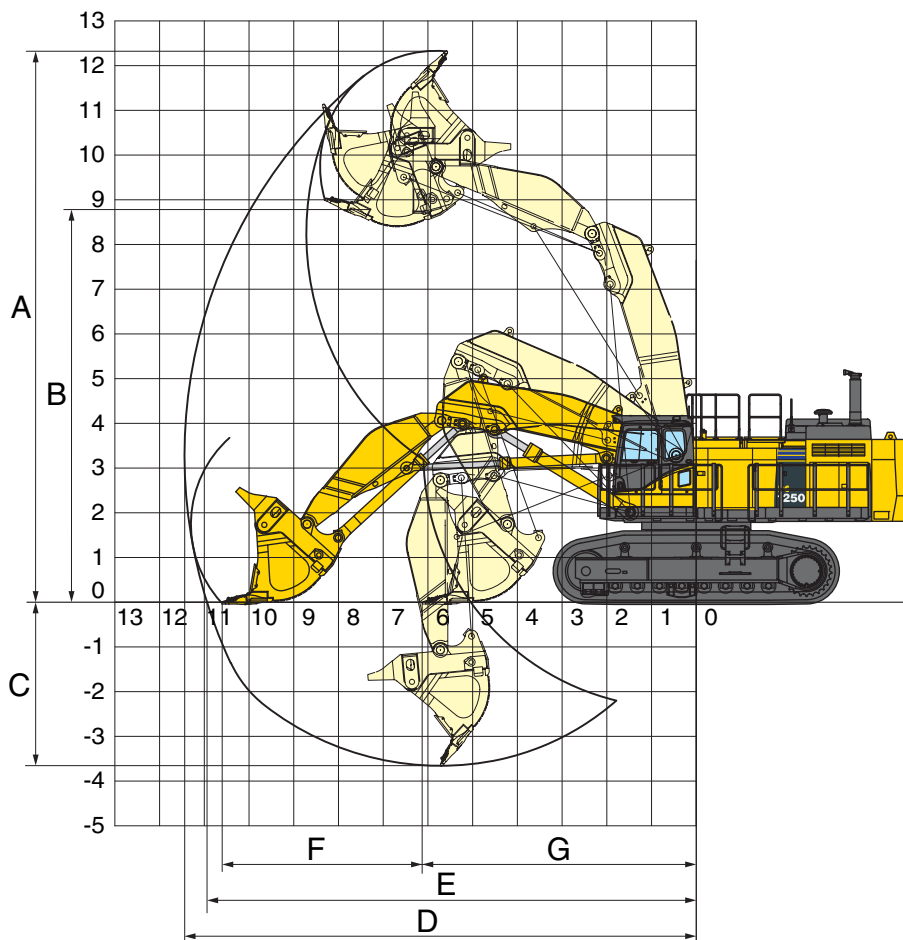
WORKING RANGE

BACKHOE



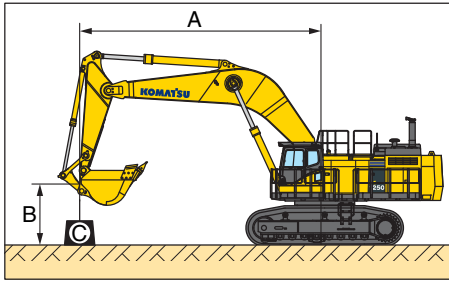
ARM LENGTH		3,4 m	4,5 m	5,7 m	3,4 m
		PC1250-8 (9,1 m boom)			PC1250SP-8 (7,8 m boom)
A	Max. digging height	13.400 mm	13.490 mm	13.910 mm	13.000 mm
B	Max. dumping height	8.680 mm	9.000 mm	9.440 mm	8.450 mm
C	Max. digging depth	9.350 mm	10.440 mm	11.590 mm	7.900 mm
D	Max. vertical wall digging depth	7.610 mm	8.490 mm	9.480 mm	5.025 mm
E	Max. digging depth of cut for 2,44 m level	9.220 mm	10.340 mm	11.500 mm	7.745 mm
F	Max. digging reach	15.350 mm	16.340 mm	17.450 mm	14.070 mm
G	Max. digging reach at ground level	15.000 mm	16.000 mm	17.130 mm	13.670 mm
H	Min. swing radius	7.965 mm	7.990 mm	8.150 mm	6.415 mm

LOADING SHOVEL



ARM LENGTH		3,8 m
		PC1250SP-8 (5,3 m boom / 6,5 m ³ bottom dump bucket)
A	Max. cutting height	12.330 mm
B	Max. dumping height	8.700 mm
C	Max. digging depth	3.650 mm
D	Max. digging reach	11.400 mm
E	Max. digging reach at ground level	10.900 mm
F	Level crowding distance	4.480 mm
G	Min. crowd distance	6.130 mm

LIFTING CAPACITY



PC1250-8

Boom: 9,1 m
 Arm: 3,4 m
 Bucket capacity: 5,0 m³
 Bucket weight: 4.400 kg
 Track shoes: 700 mm

A – Reach from swing centre

B – Bucket hook height

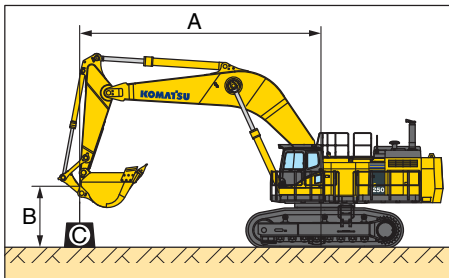
C – Lifting capacity

– Rating over front

– Rating over side

– Rating at maximum reach

Arm length	A			12,2 m		10,7 m		9,1 m		7,6 m		6,1 m		4,6 m		
Heavy Lift: ON 	9,1 m	kg	*15.200	*15.200			*18.000	*18.000								
	6,1 m	kg	*15.950	13.200			*20.050	17.400	*22.950	*22.950	*27.900	*27.900				
	3,0 m	kg	15.650	11.850	16.400	12.500	20.850	16.100	27.000	20.850	*34.950	27.650				
	0,0 m	kg	16.250	12.300			19.950	15.200	24.200	18.200	34.400	26.100				
	-3,0 m	kg	19.950	15.250			20.000	15.250	25.600	19.550	34.600	26.300	*43.850	38.400	*39.250	*39.250
	-6,1 m	kg	*23.500	*23.500							*25.400	*25.400	*32.550	*32.550		
Heavy Lift: OFF 	9,1 m	kg	*15.200	*15.200			*15.500	*15.500								
	6,1 m	kg	*15.850	13.200			*17.300	*17.300	*19.950	*19.950	*24.400	*24.400				
	3,0 m	kg	15.650	11.850	16.400	12.500	*19.800	16.100	*23.900	20.850	*30.550	27.650				
	0,0 m	kg	16.250	12.300			19.950	15.200	24.200	18.200	*32.650	26.100				
	-3,0 m	kg	*19.600	15.250			*19.650	15.250	*24.750	19.550	*30.750	26.300	*38.350	*38.350	*39.250	*39.250
	-6,1 m	kg	*20.150	*20.150							*21.900	*21.900	*28.150	*28.150		



PC1250-8

Boom: 9,1 m
 Arm: 4,5 m
 Bucket capacity: 4,0 m³
 Bucket weight: 3.800 kg
 Track shoes: 700 mm

A – Reach from swing centre

B – Bucket hook height

C – Lifting capacity

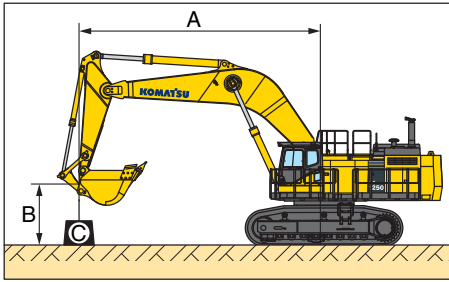
– Rating over front

– Rating over side

– Rating at maximum reach

Arm length	A			12,2 m		10,7 m		9,1 m		7,6 m		6,1 m		4,6 m		
Heavy Lift: ON 	9,1 m	kg	*9.300	*9.300												
	6,1 m	kg	*9.650	*9.650	*16.650	13.700	*18.150	18.000	*20.550	*20.550						
	3,0 m	kg	*10.950	10.200	16.650	12.750	21.200	16.400	*25.600	21.300	*32.350	28.500				
	0,0 m	kg	*13.650	10.400	15.850	11.950	19.900	15.150	24.550	18.500	34.450	26.100	*29.300	*29.300		
	-3,0 m	kg	16.400	12.400			19.550	14.800	25.100	19.050	34.000	25.700	*46.350	37.500	*31.900	*31.900
	-6,1 m	kg	*21.750	18.700					*23.650	20.000	*28.850	25.200	*38.200	*38.200	*48.900	*48.900
Heavy Lift: OFF 	9,1 m	kg	*9.300	*9.300												
	6,1 m	kg	*9.650	*9.650	*14.250	13.700	*15.600	*15.600	*17.850	*17.850						
	3,0 m	kg	*10.950	10.200	*16.050	12.750	*18.500	16.400	*22.250	21.300	*28.250	*28.250				
	0,0 m	kg	*13.650	10.400	15.850	11.950	19.900	15.150	*24.200	18.500	*31.950	26.100	*29.300	*29.300		
	-3,0 m	kg	16.400	12.400			19.550	14.800	25.100	19.050	*31.650	25.700	*40.550	37.500	*31.900	*31.900
	-6,1 m	kg	*18.650	18.650					*20.300	20.000	*24.800	24.800	*33.200	*33.200	*42.600	*42.600

* Load is limited by hydraulic capacity rather than tipping.
 Ratings are based on SAE Standard No. J10567.
 Rated loads do not exceed 87% of hydraulic lift capacity or 75% of tipping load.



PC1250-8

Boom: 9,1 m
 Arm: 5,7 m
 Bucket capacity: 3,4 m³
 Bucket weight: 3.600 kg
 Track shoes: 700 mm

A – Reach from swing centre

B – Bucket hook height

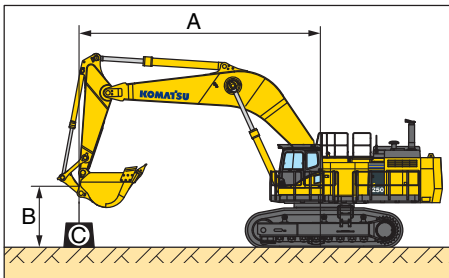
C – Lifting capacity

– Rating over front

– Rating over side

– Rating at maximum reach

Arm length	B	A		13,7 m		12,2 m		10,7 m		9,1 m		7,6 m		6,1 m		
Heavy Lift: ON 	9,1 m	kg	*5.900	*5.900												
	6,1 m	kg	*6.050	*6.050	*11.050	10.950	*14.950	14.350								
	3,0 m	kg	*6.800	*6.800	13.550	10.250	17.050	13.100	*19.800	16.900	*23.450	22.050	*29.300	*29.300	*39.750	*39.750
	0,0 m	kg	*8.400	*8.400	12.850	9.600	15.950	12.050	20.100	15.300	25.900	19.800	34.800	26.450	*31.200	*31.200
	-3,0 m	kg	*11.500	10.150			15.500	11.600	19.300	14.600	24.850	18.800	33.600	25.300	*47.600	36.800
	-6,1 m	kg	18.600	14.100					19.750	15.000	25.200	19.150	*33.250	25.850	*42.350	37.850
Heavy Lift: OFF 	9,1 m	kg	*5.900	*5.900												
	6,1 m	kg	*6.050	*6.050	*11.050	10.950	*12.700	*12.700								
	3,0 m	kg	*6.800	*6.800	*13.350	10.250	*14.850	13.100	*17.050	16.900	*20.300	*20.300	*25.550	*25.550	*34.850	*34.850
	0,0 m	kg	*8.400	*8.400	12.850	9.600	15.950	12.050	*19.700	15.300	*24.000	19.800	*30.600	26.450	*31.200	*31.200
	-3,0 m	kg	*11.500	10.150			15.500	11.600	19.300	14.600	24.850	18.800	*31.900	25.300	*41.650	36.600
	-6,1 m	kg	*16.550	14.100					*18.050	15.000	*22.950	19.150	*28.850	25.850	*36.900	*36.900



PC1250SP-8

Boom: 7,8 m
 Arm: 3,4 m
 Bucket capacity: 6,7 m³
 Bucket weight: 6.300 kg
 Track shoes: 700 mm

A – Reach from swing centre

B – Bucket hook height

C – Lifting capacity

– Rating over front

– Rating over side

– Rating at maximum reach

Arm length	B	A		12,2 m		10,7 m		9,1 m		7,6 m		6,1 m		4,6 m		
Heavy Lift: ON 	9,1 m	kg	*11.700	*11.700				*17.050	*17.050							
	6,1 m	kg	*12.250	*12.250			*16.300	16.100	*24.350	22.600	*28.750	*28.750	*36.350	*36.350		
	3,0 m	kg	*14.600	13.700			20.150	15.300	26.950	20.750	*33.850	27.000	*47.450	41.150		
	0,0 m	kg	19.300	14.550			19.400	14.600	25.600	19.450	31.750	23.500	*48.750	38.650		
	-3,0 m	kg	*23.900	19.550					*23.950	19.550	*30.750	24.850	*41.450	39.250	*52.450	*52.450
	-6,1 m	kg														
Heavy Lift: OFF 	9,1 m	kg	*11.700	*11.700				*17.050	*17.050							
	6,1 m	kg	*12.250	*12.250			*16.300	16.100	*21.150	*21.150	*25.150	*25.150	*32.100	*32.100		
	3,0 m	kg	*14.600	13.700			20.150	15.300	*24.450	20.750	*29.450	27.000	*41.750	41.150		
	0,0 m	kg	19.300	14.550			19.400	14.600	25.600	19.450	*29.900	23.500	*42.750	38.650		
	-3,0 m	kg	*20.500	19.550					*20.550	19.550	*26.450	24.850	*36.100	*36.100	*45.800	*45.800
	-6,1 m	kg														

* Load is limited by hydraulic capacity rather than tipping.
 Ratings are based on SAE Standard No. J10567.
 Rated loads do not exceed 87% of hydraulic lift capacity or 75% of tipping load.