

Specifications

ENGINE

Model	Komatsu SAA4D95LE-5
Type.....	Common rail direct injection, water cooled, emissionised, turbocharged, after-cooled, diesel
Displacement.....	3.260 cm ³
Bore × stroke.....	95 mm × 115 mm
No. of cylinders	4
Engine power	
at engine speed	2.200 rpm
ISO 14396	72,0 kW / 96,6 HP
SAE J1349	68,4 kW / 91,7 HP
Max. torque/engine speed	358 Nm/1.500 rpm
Air cleaner	dry, double element type air cleaner with dust indicator and auto-dust evacuator

DRIVES AND BRAKES

Steering control	2 levers with pedals
Transmission	hydrostatic
Hydraulic motors	variable displacement, axial piston
Max. drawbar pull.....	7.950 daN (8.100 kgf)
Max. travel speeds Lo / Hi	3,0 km/h - 4,5 km/h
Service brake.....	hydraulic lock
Parking brake	mechanical discs

UNDERCARRIAGE

Construction	X-frame centre section with box section track-frames
Type.....	fully sealed
Track adjuster.....	hydraulic
Shoes (each side)	38
Carrier rollers (each side).....	1
Track rollers (each side)	6
Ground pressure	0,43 kg/cm ²

SWING SYSTEM

Driven by	hydraulic motor
Swing reduction gear	planetary gear
Swing circle lubrication	grease-bathed
Swing brakes.....	automatic, with oil immersed disks
Swing speed.....	8,5 rpm

ELECTRIC SYSTEM

Voltage	24 V
Battery	125 Ah
Alternator	60 A
Starter motor	4,5 kW

HYDRAULIC SYSTEM

Type.....	HydrauMind. Closed-centre system with load sensing and pressure compensation valves
Main pumps:	
Pump for.....	boom, arm, bucket and travelling
Type	variable displacement, axial piston
Max. flow	198 ltr/min
Pump for.....	swing and blade
Type	fixed displacement gear pump
Max. flow	80 ltr/min
Hydraulic motors:	
Travel.....	2 × piston motor with parking brake
Swing.....	1 × piston motor with swing holding brake
Relief valve setting:	
Swing and blade	19,9 MPa (203 kg/cm ²)
Travel and work equipment	29,4 MPa (300 kg/cm ²)
Bucket breakout force (ISO 6015).....	7.169 daN (7.310 kgf)
Arm crowd force, 2.000 mm arm (ISO 6015)	4.610 daN (4.700 kgf)

SERVICE CAPACITIES

Fuel tank.....	150 ltr
Cooling system.....	12,4 ltr
Engine oil.....	11 ltr
Final drive (each side).....	2 ltr
Swing drive.....	3,5 ltr
Hydraulic oil tank.....	80 ltr

CAB

Sound-proof cab, provided with safety glasses, liftable windscreen, roof window, sliding door with lock, windscreen-wiper, electric horn, adjustable seat with double slide, control system and instrumentation, adjustable joysticks, outside air inlet.

ENVIRONMENT

Engine emissions	Fully complies with EU Stage IIIA and EPA Tier III exhaust emission regulations
Noise levels	
LwA external	100 dB(A) (2000/14/EC Stage II)
LpA operator ear	74 dB(A) (ISO 6396 dynamic test)
Vibration levels (EN 12096:1997)*	
Hand/arm	≤ 2,5 m/s ² (uncertainty K = 0,45 m/s ²)
Body	≤ 0,5 m/s ² (uncertainty K = 0,20 m/s ²)

* for the purpose of risk assessment under directive 2002/44/EC, please refer to ISO/TR 25398:2006.

OPERATING WEIGHT

Operating weight, including 2.000 mm arm, 0,38 m³ bucket (ISO 7451), blade, operator, liquids, filled tank and standard equipment (ISO 6016).

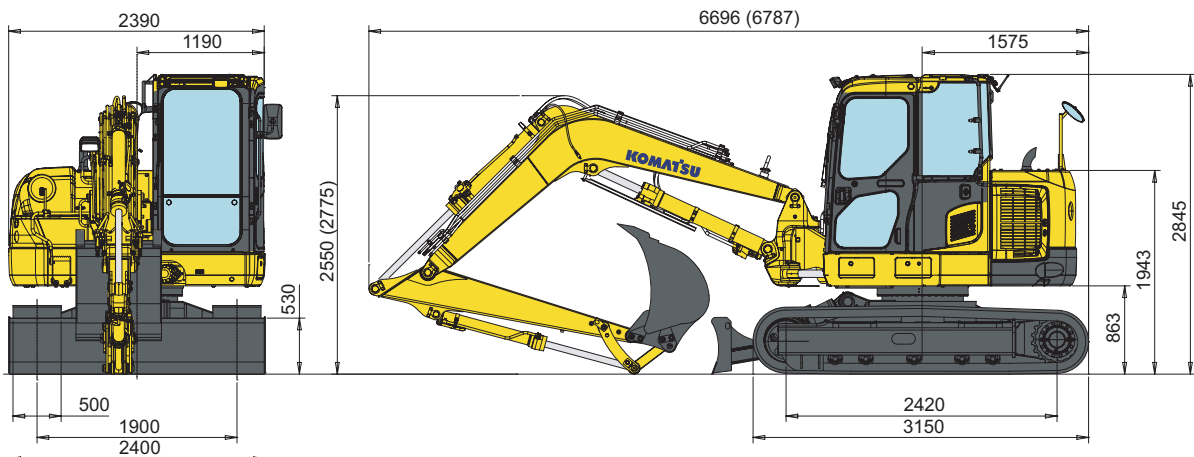
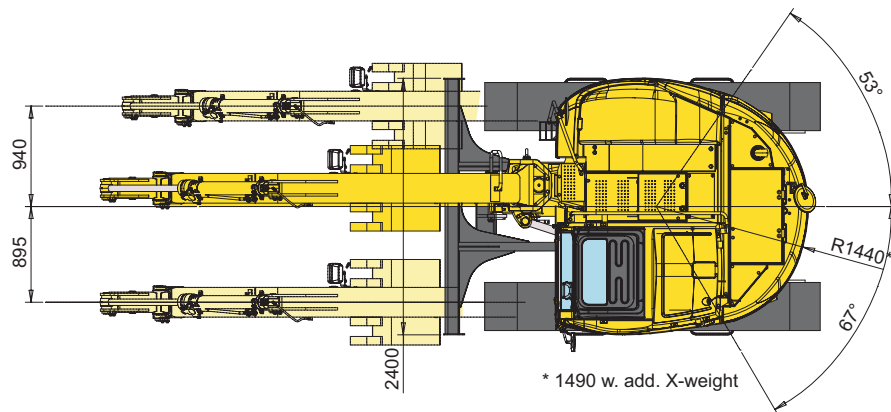
BLADE

Width × height2.400 × 530 mm
 Max. lifting above ground level490 mm
 Max. depth below ground level.....400 mm

Shoes	Width	Mono boom	Two-piece boom
Steel (500 mm)	2.400 mm	11.885 kg	12.065 kg
Road liner (500 mm)	2.400 mm	12.005 kg	12.190 kg

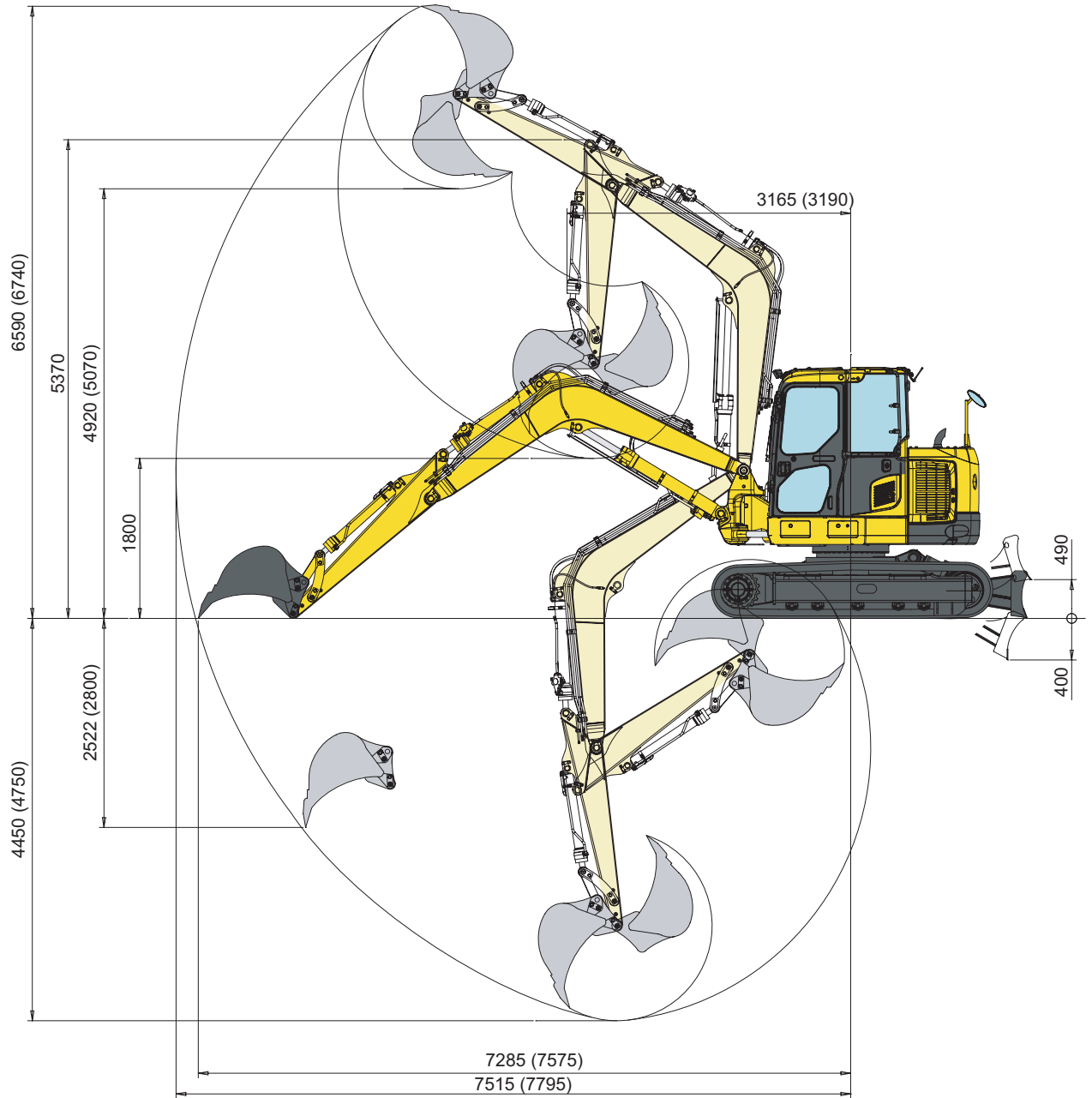
Bucket capacity (ISO 7451)	m ³	0,093	0,15	0,19	0,24	0,28	0,33	0,36	0,40
Bucket width	mm	300	400	500	600	700	800	900	1.000
Bucket weight	kg	168	194	218	234	252	270	294	320
No. of teeth	-	2	3	3	4	4	4	5	5

DIMENSIONS

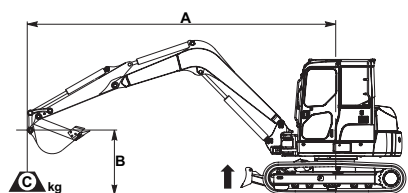


Working Range

WORKING RANGE MONO BOOM



LIFTING CAPACITY MONO BOOM



A – Reach from swing centre

B – Bucket hook height

C – Lifting capacities, including bucket (290 kg), bucket linkage and bucket cylinder

– Rating over front

– Rating over side

– Rating at maximum reach

When removing bucket, linkage or cylinder, lifting capacities can be increased by their respective weights.

With 500 mm shoes.

Arm length	A				6,0 m		4,5 m		3,0 m		1,5 m	
	B											
1.850 mm	4,5 m	kg	*1.730	1.460								
	3,0 m	kg	1.420	1.190	1.580	1.320	*2.060	*2.060				
	1,5 m	kg	1.330	1.110	1.520	1.260	2.430	1.960				
	0,0 m	kg	1.390	1.160	1.470	1.220	2.320	1.860	*3.300	3.300		
2.000 mm	4,5 m	kg	*1.590	1.380	*1.560	1.340						
	3,0 m	kg	1.360	1.140	1.580	1.320	*1.910	*1.910				
	1,5 m	kg	1.270	1.060	1.510	1.260	2.430	1.960				
	0,0 m	kg	1.320	1.100	1.460	1.210	2.310	1.850	*3.380	3.270		
2.300 mm	4,5 m	kg	*1.360	1.260	*1.390	1.350					*1.630	*1.630
	3,0 m	kg	1.250	1.050	1.580	1.320	*1.620	*1.620				
	1,5 m	kg	1.170	980	1.510	1.250	2.440	1.960				
	0,0 m	kg	1.220	1.010	1.450	1.200	2.300	1.840	*3.560	3.250		
	-1,5 m	kg	1.440	1.190	1.440	1.190	2.250	1.790	4.440	3.230	*3.370	*3.370

WITH ADDITIONAL COUNTERWEIGHT (388 kg)

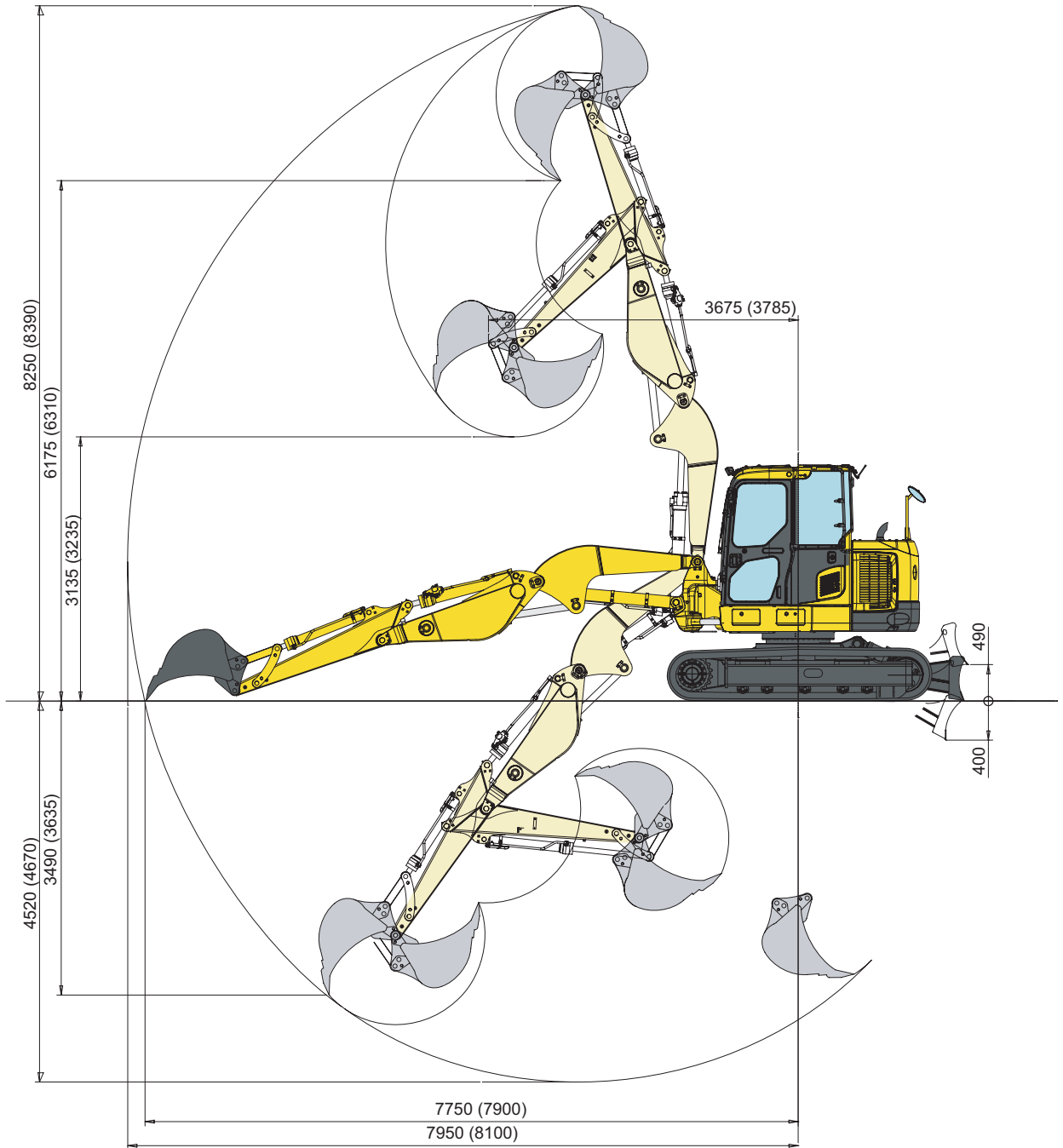
Arm length	A				6,0 m		4,5 m		3,0 m		1,5 m	
	B											
1.850 mm	4,5 m	kg	*1.730	1.590								
	3,0 m	kg	1.570	1.310	1.740	1.440	*2.060	*2.060				
	1,5 m	kg	1.470	1.220	1.680	1.390	2.660	2.130				
	0,0 m	kg	1.540	1.270	1.640	1.350	2.550	2.030	*3.300	*3.300		
2.000 mm	4,5 m	kg	*1.590	1.500	*1.560	1.460						
	3,0 m	kg	1.500	1.250	1.740	1.440	*1.910	*1.910				
	1,5 m	kg	1.410	1.170	1.670	1.380	2.660	2.130				
	0,0 m	kg	1.470	1.210	1.620	1.330	2.540	2.020	*3.380	*3.380		
2.300 mm	4,5 m	kg	*1.360	*1.360	*1.390	*1.390					*1.630	*1.630
	3,0 m	kg	*1.370	1.160	*1.600	1.440	*1.620	*1.620				
	1,5 m	kg	1.310	1.080	1.670	1.370	2.650	2.130				
	0,0 m	kg	1.360	1.120	1.610	1.320	2.530	2.010	*3.560	3.530		
	-1,5 m	kg	1.600	1.310	1.600	1.310	2.480	1.960	4.880	3.520	*3.370	*3.370

Ratings are based on ISO standard 10567. Rated loads do not exceed 87% of hydraulic lift capacity or 75% of tipping load. Excavators used in object handling operations must comply with the related local regulations and must be equipped with hose burst valves (boom & arm) and an overload warning device in compliance with EN474-5.

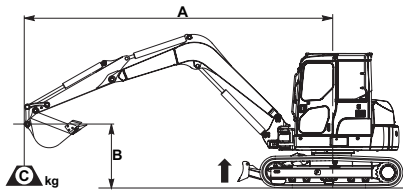
- The values marked with an asterisk (*) are limited by the hydraulic capacities
- Calculations are based on the machine resting on a uniform and firm surface
- The lifting point is a hypothetical hook placed behind the bucket.

Working Range

WORKING RANGE TWO-PIECE BOOM



LIFTING CAPACITY TWO-PIECE BOOM



A – Reach from swing centre

B – Bucket hook height

C – Lifting capacities, including bucket (290 kg), bucket linkage and bucket cylinder

– Rating over front

– Rating over side

– Rating at maximum reach

When removing bucket, linkage or cylinder, lifting capacities can be increased by their respective weights.

With 500 mm shoes.

Arm length	A				6,0 m		4,5 m		3,0 m		1,5 m	
	B											
1.850 mm	4,5 m	kg	1.290	1.050	1.530	1.250	*1.980	*1.980				
	3,0 m	kg	1.090	890	1.480	1.210						
	1,5 m	kg	1.040	850	1.400	1.140						
	0,0 m	kg	1.100	900	1.360	1.100	2.130	1.670				
	-1,5 m	kg	1.320	1.080	1.390	1.120	2.150	1.690	*3.210	3.080		
2.000 mm	4,5 m	kg	1.220	1.000	1.530	1.260	*1.860	*1.860				
	3,0 m	kg	1.040	850	1.480	1.200						
	1,5 m	kg	990	810	1.390	1.130						
	0,0 m	kg	1.040	850	1.350	1.090	2.110	1.650				
	-1,5 m	kg	1.250	1.010	1.360	1.100	2.130	1.670	*3.020	*3.020		
2.300 mm	4,5 m	kg	1.110	900	1.550	1.270	*1.630	*1.630				
	3,0 m	kg	950	780	1.480	1.210						
	1,5 m	kg	910	740	1.390	1.120						
	0,0 m	kg	960	780	1.330	1.070	2.100	1.640				
	-1,5 m	kg	1.130	910	1.330	1.070	2.090	1.630				

WITH ADDITIONAL COUNTERWEIGHT (388 kg)

Arm length	A				6,0 m		4,5 m		3,0 m		1,5 m	
	B											
1.850 mm	4,5 m	kg	1.430	1.170	1.690	1.380	*1.980	*1.980				
	3,0 m	kg	1.220	990	1.640	1.330						
	1,5 m	kg	1.170	950	1.560	1.260						
	0,0 m	kg	1.230	1.000	1.520	1.220	2.360	1.840				
	-1,5 m	kg	1.480	1.190	1.550	1.250	2.390	1.860	*3.210	*3.210		
2.000 mm	4,5 m	kg	1.360	1.100	1.690	1.380	*1.860	*1.860				
	3,0 m	kg	1.170	950	1.640	1.320						
	1,5 m	kg	1.120	900	1.550	1.250						
	0,0 m	kg	1.180	950	1.510	1.210	2.350	1.820				
	-1,5 m	kg	1.390	1.130	1.520	1.220	2.360	1.830	*3.020	*3.020		
2.300 mm	4,5 m	kg	1.240	1.010	*1.650	1.390	*1.630	*1.630				
	3,0 m	kg	1.080	870	1.640	1.330						
	1,5 m	kg	1.030	830	1.550	1.240						
	0,0 m	kg	1.080	870	1.490	1.190	2.330	1.810				
	-1,5 m	kg	1.260	1.020	1.490	1.190	2.320	1.790				

Ratings are based on ISO standard 10567. Rated loads do not exceed 87% of hydraulic lift capacity or 75% of tipping load. Excavators used in object handling operations must comply with the related local regulations and must be equipped with hose burst valves (boom & arm) and an overload warning device in compliance with EN474-5.

- The values marked with an asterisk (*) are limited by the hydraulic capacities
- Calculations are based on the machine resting on a uniform and firm surface
- The lifting point is a hypothetical hook placed behind the bucket.