

Specifications

ENGINE

Model	Komatsu SAA6D107E-2
Type	Common rail direct injection, water-cooled, emissionised, turbocharged, after-cooled diesel
Engine power	
at rated engine speed	2.000 rpm
ISO 14396	123 kW / 165 HP
ISO 9249 (net engine power)	118 kW / 158 HP
No. of cylinders	6
Bore x stroke	107 x 124 mm
Displacement	6,69 ltr
Battery	2 x 12 V/155 Ah
Alternator	24 V/60 A
Starter motor	24 V/5,5 kW
Air filter type	Double element type with monitor panel dust indicator and auto dust evacuator
Cooling	Suction type cooling fan with radiator fly screen

HYDRAULIC SYSTEM

Type	HydrauMind. Closed-centre system with load sensing and pressure compensation valves
Additional circuits	2 additional circuits with proportional control can be installed
Main pump	2 variable displacement piston pumps supplying boom, arm, bucket, swing and travel circuits
Maximum pump flow	2 x 237,5 ltr/min
Relief valve settings	
Implement	380 kg/cm ²
Travel	380 kg/cm ²
Swing	295 kg/cm ²
Pilot circuit	33 kg/cm ²

UNDERCARRIAGE

Construction	X-frame centre section with box section track frames
Track assembly	
Type	Fully sealed
Shoes (each side)	49
Tension	Combined spring and hydraulic unit
Rollers	
Track rollers (each side)	9
Carrier rollers (each side)	2

OPERATING WEIGHT (APPR.)

	MONO BOOM	
	Operating weight	Ground pressure
Triple grouser shoes		
600 mm	22.410 kg	0,47 kg/cm ²
700 mm	22.690 kg	0,41 kg/cm ²
800 mm	23.010 kg	0,36 kg/cm ²
900 mm	23.340 kg	0,33 kg/cm ²

Operating weight, including specified work equipment, 2,9 m arm, 0,8 m³ bucket, operator, lubricant, coolant, full fuel tank and the standard equipment.

SWING SYSTEM

Type	Axial piston motor driving through planetary double reduction gearbox
Swing lock	Electrically actuated wet multi-disc brake integrated into swing motor
Swing speed	0 - 12,4 rpm
Swing torque	64,6 kNm
Max. pressure	295 kg/cm ²

DRIVES AND BRAKES

Steering control	2 levers with pedals giving full independent control of each track
Drive method	Hydrostatic
Travel operation	Automatic 3-speed selection
Gradeability	70%, 35°
Max. travel speeds	
Lo / Mi / Hi	3,0 / 4,1 / 5,5 km/h
Maximum drawbar pull	20.600 kg
Brake system	Hydraulically operated discs in each travel motor

SERVICE REFILL CAPACITIES

Fuel tank	400 ltr
Radiator	30,7 ltr
Engine oil	23,1 ltr
Swing drive	6,5 ltr
Hydraulic tank	132 ltr
Final drive (each side)	5,0 ltr

ENVIRONMENT

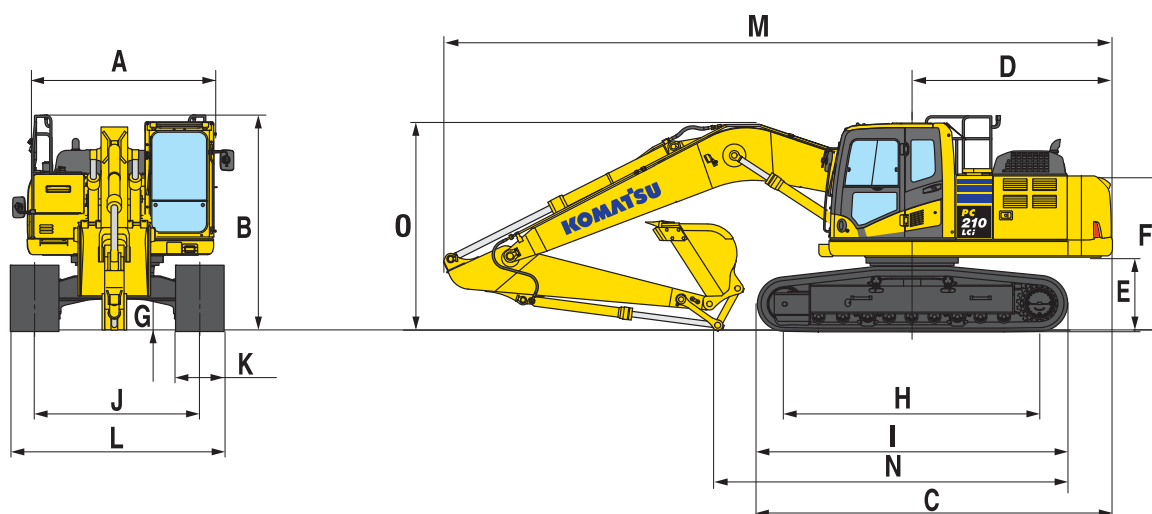
Engine emissions	Fully complies with EU Stage IIIB and EPA Tier 4 interim exhaust emission regulations
Noise levels	
LwA external	102 dB(A) (2000/14/EC Stage II)
LpA operator ear	69 dB(A) (ISO 6396 dynamic test)
Vibration levels (EN 12096:1997)*	
Hand/arm	≤ 2,5 m/s ² (uncertainty K = 0,49 m/s ²)
Body	≤ 0,5 m/s ² (uncertainty K = 0,24 m/s ²)

* for the purpose of risk assessment under directive 2002/44/EC, please refer to ISO/TR 25398:2006.

Dimensions & Performance Figures

MACHINE DIMENSIONS

A	Overall width of upper structure	2.850 mm
B	Overall height (top of cab)	3.045 mm
	Overall height (handrail)	3.135 mm
C	Overall length of basic machine	5.135 mm
D	Tail length	2.910 mm
	Tail swing radius	2.940 mm
E	Clearance under counterweight	1.085 mm
F	Machine tail height	2.250 mm
G	Ground clearance	440 mm
H	Tumbler centre distance	3.655 mm
I	Track length	4.450 mm
J	Track gauge	2.380 mm
K	Track shoe width	600, 700, 800, 900 mm
L	Overall track width with 600 mm shoes	2.980 mm
	Overall track width with 700 mm shoes	3.080 mm
	Overall track width with 800 mm shoes	3.180 mm
	Overall track width with 900 mm shoes	3.280 mm



TRANSPORT DIMENSIONS

	Arm length	2,9 m
M	Transport length	9.625 mm
N	Length on ground (transport)	5.000 mm
O	Overall height (to top of boom)	2.995 mm



MAX. BUCKET CAPACITY AND WEIGHT

	MONO BOOM
Arm length	2,9 m
Material weight up to 1,2 t/m ³	1,65 m ³ 1.150 kg
Material weight up to 1,5 t/m ³	1,40 m ³ 1.025 kg
Material weight up to 1,8 t/m ³	1,22 m ³ 925 kg

Max. capacity and weight have been calculated according to ISO 10567:2007.
Please consult with your distributor for the correct selection of buckets and attachments to suit the application.

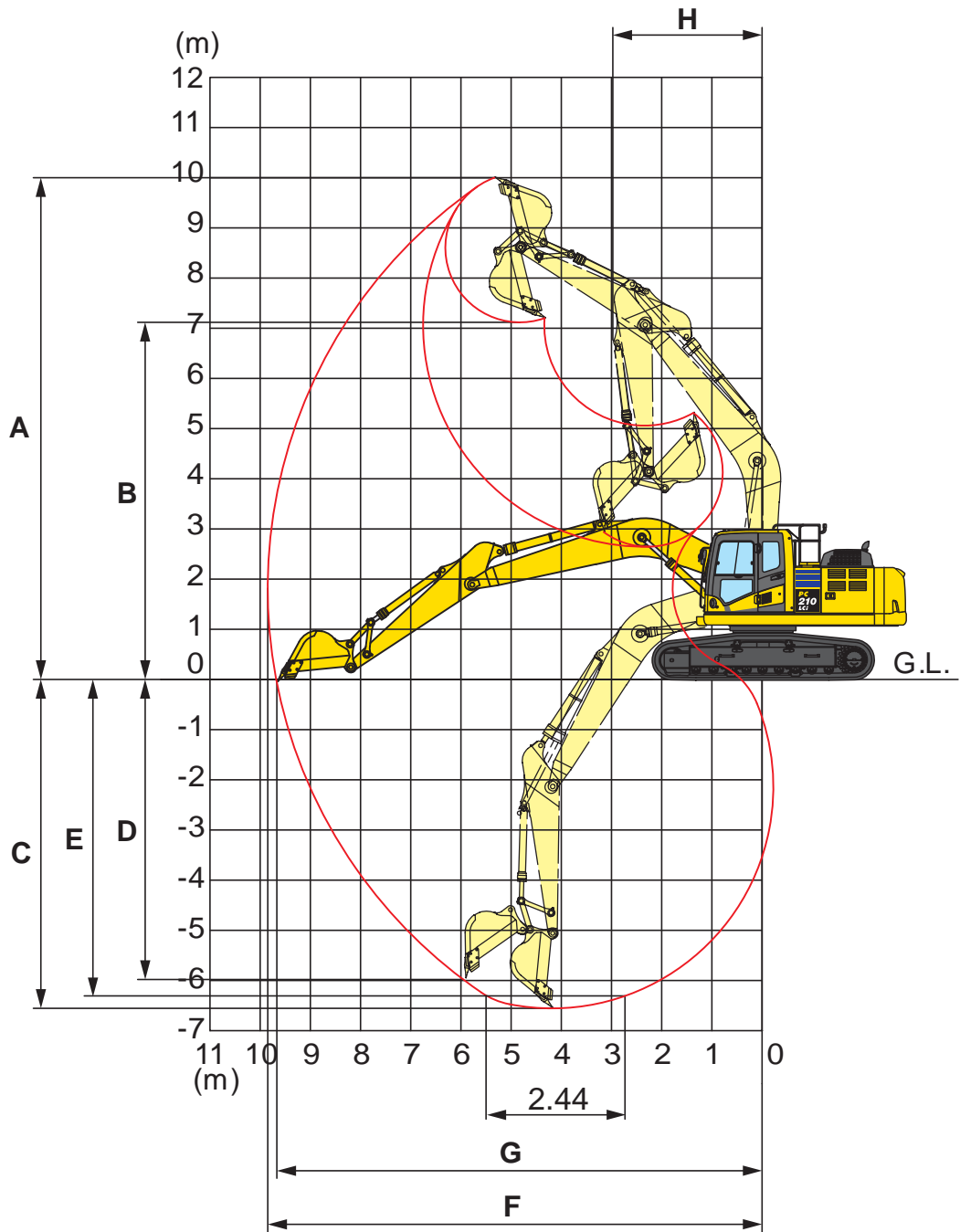
BUCKET AND ARM FORCE

Arm length	2,9 m
Bucket digging force	14.100 kg
Bucket digging force at PowerMax	15.200 kg
Arm crowd force	10.300 kg
Arm crowd force at PowerMax	11.000 kg



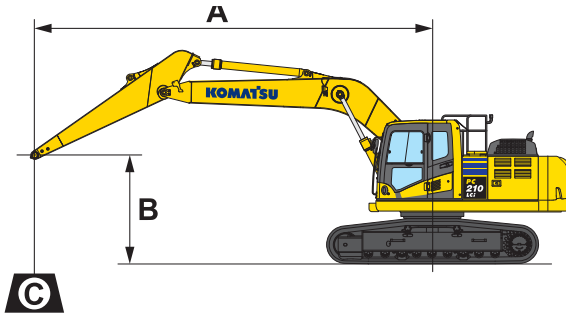
Working Range

MONO BOOM



ARM LENGTH	2,9 m
A Max. digging height	10.000 mm
B Max. dumping height	7.110 mm
C Max. digging depth	6.620 mm
D Max. vertical wall digging depth	5.980 mm
E Max. digging depth of cut for 2,44 m level	6.370 mm
F Max. digging reach	9.875 mm
G Max. digging reach at ground level	9.700 mm
H Min. swing radius	3.040 mm

MONO BOOM



- A – Reach from swing center
- B – Bucket hook height
- C – Lifting capacities

Weights:

With 2,9 m arm: bucket linkage and bucket cylinder: 335 kg

With 600 mm shoes

- Rating over front
- Rating over side
- Rating at maximum reach

Arm length	A		7,5 m		6,0 m		4,5 m		3,0 m		1,5 m	
	B											

Arm length	7,5 m		6,0 m		4,5 m		3,0 m		1,5 m			
7,5 m	kg *3.820	*3.813			*5.020	*5.020						
6,0 m	kg *3.720	*3.720	*4.020	*4.020	*5.220	*5.220						
4,5 m	kg *3.720	*3.720	*5.520	4.370	*5.820	*5.820	*6.470	*6.470				
3,0 m	kg *3.870	3.563	*6.020	4.270	*6.820	5.770	*8.670	8.470	*12.520	*12.520		
1,5 m	kg *4.170	3.470	6.020	4.120	*7.870	5.470	*10.720	8.020	*7.770	*7.770		
0,0 m	kg *4.670	3.520	5.920	4.020	8.020	5.270	*11.720	7.620	*6.170	*6.170		
-1,5 m	kg 5.520	3.770	5.870	3.972	7.920	5.170	*11.870	7.520	*10.270	*10.270	*6.120	*6.120
-3,0 m	kg 6.420	4.270			7.920	5.170	*11.470	7.570	*15.770	14.270	*10.720	*10.720
-4,5 m	kg *7.620	5.670					*10.020	7.770	*13.870	*13.870		

* Load is limited by hydraulic capacity rather than tipping.

Ratings are based on SAE Standard No. J1097.

Rated loads do not exceed 87% of hydraulic lift capacity or 75% of tipping load.

When lifting with additional equipment installed to the arm, please subtract the weight of all additional equipment from the values stated.