

ENGINE

| | |
|-----------------------------------|---|
| Model | Komatsu SAA6D107E-2 |
| Type | Common rail direct injection, water-cooled, emissionised, turbocharged, after-cooled diesel |
| Engine power | |
| at rated engine speed | 2.050 rpm |
| ISO 14396 | 159 kW/213 HP |
| ISO 9249 (net engine power) | 147 kW/196 HP |
| No. of cylinders | 6 |
| Bore x stroke | 107 x 124 mm |
| Displacement | 6,69 ltr |
| Battery | 2 x 12 V/155 Ah |
| Alternator | 24 V/60 A |
| Starter motor | 24 V/5,5 kW |
| Air filter type | Double element type with monitor panel dust indicator and auto dust evacuator |
| Cooling | Suction type cooling fan with radiator fly screen |

HYDRAULIC SYSTEM

| | |
|---------------------------|---|
| Type | HydrauMind. Closed-centre system with load sensing and pressure compensation valves |
| Additional circuits | 2 additional circuits with proportional control can be installed |
| Main pump | 2 variable displacement piston pumps supplying boom, arm, bucket, swing and travel circuits |
| Maximum pump flow | 2 x 239,5 ltr/min |
| Relief valve settings | |
| Implement | 380 kg/cm ² |
| Travel | 380 kg/cm ² |
| Swing | 295 kg/cm ² |
| Pilot circuit | 33 kg/cm ² |

UNDERCARRIAGE

| | |
|-----------------------------------|--|
| Construction | X-frame centre section with box section track frames |
| Track assembly | |
| Type | Fully sealed |
| Shoes (each side) | 48 |
| Tension | Combined spring and hydraulic unit |
| Rollers | |
| Track rollers (each side) | 8 |
| Carrier rollers (each side) | 2 |

OPERATING WEIGHT (APPR.)

| | MONO BOOM | | | | TWO-PIECE BOOM | | | |
|----------------------|------------------|-------------------------|------------------|-------------------------|------------------|-------------------------|------------------|-------------------------|
| | PC290LC-10 | | PC290NLC-10 | | PC290LC-10 | | PC290NLC-10 | |
| Triple grouser shoes | Operating weight | Ground pressure | Operating weight | Ground pressure | Operating weight | Ground pressure | Operating weight | Ground pressure |
| 600 mm | 29.900 kg | 0,53 kg/cm ² | 29.800 kg | 0,53 kg/cm ² | 31.230 kg | 0,56 kg/cm ² | 31.130 kg | 0,56 kg/cm ² |
| 700 mm | 30.300 kg | 0,46 kg/cm ² | 30.200 kg | 0,46 kg/cm ² | 31.630 kg | 0,48 kg/cm ² | 31.530 kg | 0,48 kg/cm ² |
| 800 mm | 30.700 kg | 0,41 kg/cm ² | 30.600 kg | 0,41 kg/cm ² | 32.030 kg | 0,43 kg/cm ² | 31.930 kg | 0,43 kg/cm ² |
| 850 mm | 30.900 kg | 0,39 kg/cm ² | 30.800 kg | 0,39 kg/cm ² | 32.230 kg | 0,41 kg/cm ² | 32.130 kg | 0,40 kg/cm ² |

Operating weight, including specified work equipment, 3,2 m arm, 1.300 kg (1,2 m³) bucket, operator, lubricant, coolant, full fuel tank and the standard equipment.

SWING SYSTEM

| | |
|---------------------|--|
| Type | Axial piston motor driving through planetary double reduction gearbox |
| Swing lock | Electrically actuated wet multi-disc brake integrated into swing motor |
| Swing speed | 0 - 10,5 rpm |
| Swing torque | 88 kNm |
| Max. pressure | 295 kg/cm ² |

DRIVES AND BRAKES

| | |
|----------------------------|--|
| Steering control | 2 levers with pedals giving full independent control of each track |
| Drive method | Hydrostatic |
| Travel operation | Automatic 3-speed selection |
| Gradeability | 70%, 35° |
| Max. travel speeds | |
| Lo / Mi / Hi | 3,0 / 4,1 / 5,5 km/h |
| Maximum drawbar pull | 25.400 kg |
| Brake system | Hydraulically operated discs in each travel motor |

SERVICE REFILL CAPACITIES

| | |
|-------------------------------|----------|
| Fuel tank | 400 ltr |
| Radiator | 36,0 ltr |
| Engine oil | 23,1 ltr |
| Swing drive | 7,2 ltr |
| Hydraulic tank | 132 ltr |
| Final drive (each side) | 8,5 ltr |

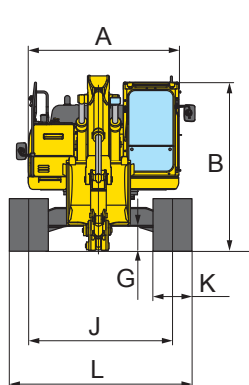
ENVIRONMENT

| | |
|-----------------------------------|---|
| Engine emissions | Fully complies with EU Stage IIIB and EPA Tier 4 interim exhaust emission regulations |
| Noise levels | |
| LwA external | 104 dB(A) (2000/14/EC Stage II) |
| LpA operator ear | 70 dB(A) (ISO 6396 dynamic test) |
| Vibration levels (EN 12096:1997)* | |
| Hand/arm | ≤ 2,5 m/s ² (uncertainty K = 0,37 m/s ²) |
| Body | ≤ 0,5 m/s ² (uncertainty K = 0,17 m/s ²) |

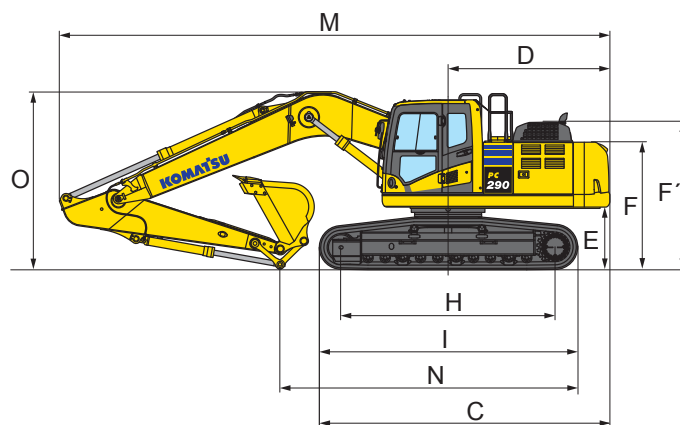
* for the purpose of risk assessment under directive 2002/44/EC, please refer to ISO/TR 25398:2006.

Dimensions & Performance Figures

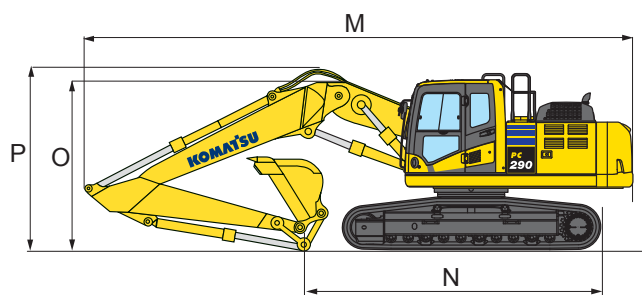
| MACHINE DIMENSIONS | PC290LC-10 | PC290NLC-10 |
|--|-----------------------|-----------------------|
| A Overall width of upper structure | 2.850 mm | 2.850 mm |
| B Overall height of cab | 3.180 mm | 3.180 mm |
| C Overall length of basic machine | 5.380 mm | 5.380 mm |
| D Tail length | 2.905 mm | 2.905 mm |
| Tail swing radius | 2.940 mm | 2.940 mm |
| E Clearance under counterweight | 1.215 mm | 1.215 mm |
| F Machine tail height | 2.380 mm | 2.380 mm |
| F' Machine tail height (top of engine cover) | 2.715 mm | 2.715 mm |
| G Ground clearance | 500 mm | 500 mm |
| H Tumbler centre distance | 4.030 mm | 4.030 mm |
| I Track length | 4.955 mm | 4.955 mm |
| J Track gauge | 2.590 mm | 2.390 mm |
| K Track shoe width | 600, 700, 800, 850 mm | 600, 700, 800, 850 mm |
| L Overall track width with 600 mm shoes | 3.190 mm | 2.990 mm |
| Overall track width with 700 mm shoes | 3.290 mm | 3.090 mm |
| Overall track width with 800 mm shoes | 3.390 mm | 3.190 mm |
| Overall track width with 850 mm shoes | 3.440 mm | 3.240 mm |



MONO BOOM



TWO-PIECE BOOM



| TRANSPORT DIMENSIONS | MONO BOOM | | | | TWO-PIECE BOOM | | |
|-----------------------------------|-----------|-----------|-----------|-----------|----------------|-----------|----------|
| Arm length | 2,0 m | 2,65 m | 3,2 m | 3,5 m | 2,65 m | 3,2 m | 3,5 m |
| M Transport length | 10.080 mm | 10.240 mm | 10.185 mm | 10.195 mm | 10.060 mm | 10.030 mm | 9.970 mm |
| N Length on ground (transport) | 6.615 mm | 6.425 mm | 5.625 mm | 5.350 mm | 6.825 mm | 6.155 mm | 5.765 mm |
| O Overall height (to top of boom) | 3.160 mm | 3.425 mm | 3.340 mm | 3.375 mm | 3.180 mm | 3.210 mm | 3.230 mm |
| P Overall height (to top of hose) | - | - | - | - | 3.565 mm | 3.620 mm | 3.730 mm |

**PC290LC-10 / MAX. BUCKET CAPACITY AND WEIGHT**

| MONO BOOM | | | | | | | | |
|--|---------------------|----------|---------------------|----------|---------------------|----------|---------------------|----------|
| Arm length | 2,0 m | | 2,65 m | | 3,2 m | | 3,5 m | |
| Material weight up to 1,2 t/m ³ | 2,02 m ³ | 1.400 kg | 2,02 m ³ | 1.400 kg | 2,02 m ³ | 1.400 kg | 2,02 m ³ | 1.400 kg |
| Material weight up to 1,5 t/m ³ | 2,02 m ³ | 1.400 kg | 1,98 m ³ | 1.375 kg | 1,78 m ³ | 1.300 kg | 1,72 m ³ | 1.275 kg |
| Material weight up to 1,8 t/m ³ | 1,93 m ³ | 1.350 kg | 1,71 m ³ | 1.275 kg | 1,50 m ³ | 1.200 kg | 1,49 m ³ | 1.175 kg |

| TWO-PIECE BOOM | | | | | | | | |
|--|---------------------|----------|---------------------|----------|---------------------|----------|--|--|
| Arm length | 2,65 m | | 3,2 m | | 3,5 m | | | |
| Material weight up to 1,2 t/m ³ | 2,02 m ³ | 1.400 kg | 2,02 m ³ | 1.400 kg | 1,99 m ³ | 1.400 kg | | |
| Material weight up to 1,5 t/m ³ | 1,95 m ³ | 1.375 kg | 1,75 m ³ | 1.275 kg | 1,68 m ³ | 1.250 kg | | |
| Material weight up to 1,8 t/m ³ | 1,69 m ³ | 1.250 kg | 1,52 m ³ | 1.175 kg | 1,46 m ³ | 1.150 kg | | |

PC290NLC-10 / MAX. BUCKET CAPACITY AND WEIGHT

| MONO BOOM | | | | | | | | |
|--|---------------------|----------|---------------------|----------|---------------------|----------|---------------------|----------|
| Arm length | 2,0 m | | 2,65 m | | 3,2 m | | 3,5 m | |
| Material weight up to 1,2 t/m ³ | 2,02 m ³ | 1.400 kg | 2,02 m ³ | 1.400 kg | 1,88 m ³ | 1.350 kg | 1,82 m ³ | 1.300 kg |
| Material weight up to 1,5 t/m ³ | 2,00 m ³ | 1.400 kg | 1,77 m ³ | 1.300 kg | 1,59 m ³ | 1.200 kg | 1,54 m ³ | 1.200 kg |
| Material weight up to 1,8 t/m ³ | 1,73 m ³ | 1.275 kg | 1,53 m ³ | 1.175 kg | 1,30 m ³ | 1.125 kg | 1,33 m ³ | 1.100 kg |

| TWO-PIECE BOOM | | | | | | | | |
|--|---------------------|----------|---------------------|----------|---------------------|----------|--|--|
| Arm length | 2,65 m | | 3,2 m | | 3,5 m | | | |
| Material weight up to 1,2 t/m ³ | 2,02 m ³ | 1.400 kg | 1,85 m ³ | 1.325 kg | 1,78 m ³ | 1.300 kg | | |
| Material weight up to 1,5 t/m ³ | 1,74 m ³ | 1.275 kg | 1,56 m ³ | 1.200 kg | 1,50 m ³ | 1.175 kg | | |
| Material weight up to 1,8 t/m ³ | 1,51 m ³ | 1.175 kg | 1,35 m ³ | 1.100 kg | 1,30 m ³ | 1.075 kg | | |

Max. capacity and weight have been calculated according to ISO 10567:2007.

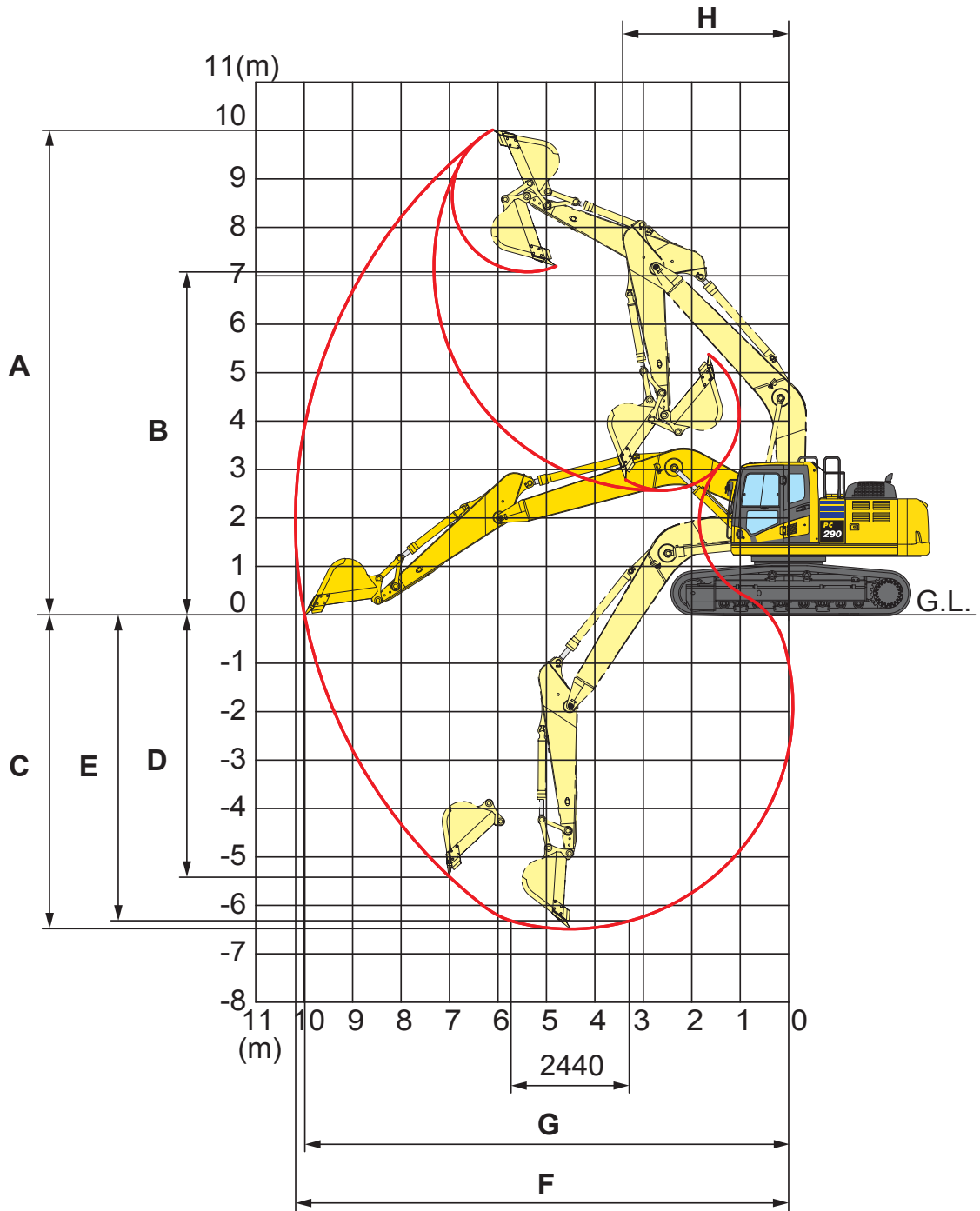
Please consult with your distributor for the correct selection of buckets and attachments to suit the application.

BUCKET AND ARM FORCE

| Arm length | 2,0 m | 2,65 m | 3,2 m | 3,5 m |
|----------------------------------|-----------|-----------|-----------|-----------|
| Bucket digging force | 21.600 kg | 21.600 kg | 18.800 kg | 18.800 kg |
| Bucket digging force at PowerMax | 23.100 kg | 23.100 kg | 20.200 kg | 20.200 kg |
| Arm crowd force | 17.600 kg | 15.280 kg | 13.420 kg | 12.000 kg |
| Arm crowd force at PowerMax | 18.800 kg | 16.320 kg | 14.370 kg | 12.800 kg |

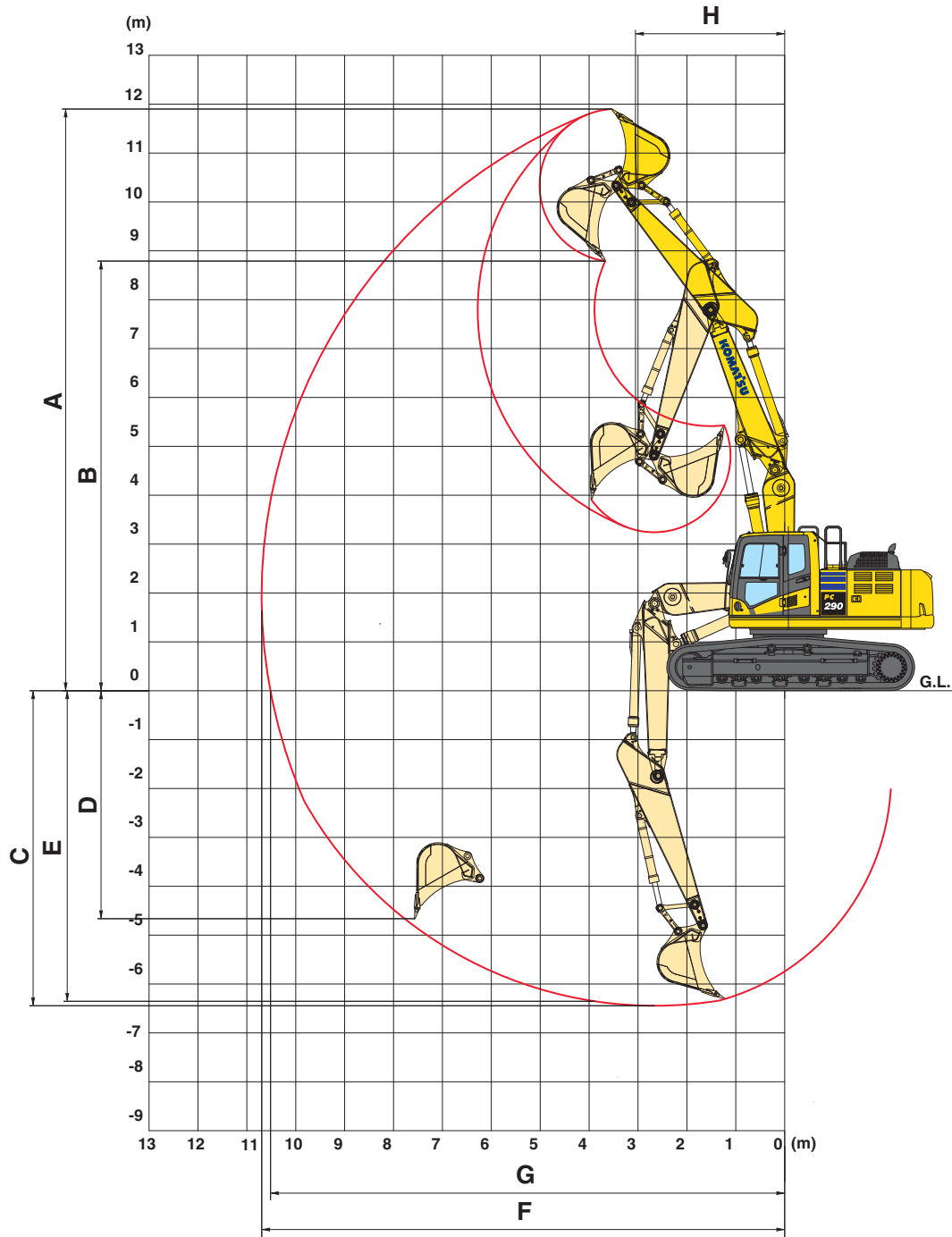
Working Range

MONO BOOM



| ARM LENGTH | 2,0 m | 2,65 m | 3,2 m | 3,5 m |
|--|----------|-----------|-----------|-----------|
| A Max. digging height | 9.780 mm | 9.985 mm | 10.345 mm | 10.355 mm |
| B Max. dumping height | 6.830 mm | 7.040 mm | 7.370 mm | 7.435 mm |
| C Max. digging depth | 5.720 mm | 6.360 mm | 6.915 mm | 7.220 mm |
| D Max. vertical wall digging depth | 3.910 mm | 5.365 mm | 6.135 mm | 5.110 mm |
| E Max. digging depth of cut for 2,44 m level | 5.500 mm | 6.175 mm | 6.755 mm | 7.070 mm |
| F Max. digging reach | 9.570 mm | 10.095 mm | 10.635 mm | 10.890 mm |
| G Max. digging reach at ground level | 9.370 mm | 9.905 mm | 10.455 mm | 10.715 mm |
| H Min. swing radius | 3.620 mm | 3.740 mm | 3.680 mm | 3.740 mm |

TWO-PIECE BOOM



| ARM LENGTH | 2,0 m | 2,65 m | 3,2 m | 3,5 m |
|--|-----------|-----------|-----------|-----------|
| A Max. digging height | 10.960 mm | 11.295 mm | 11.880 mm | 12.065 mm |
| B Max. dumping height | 7.870 mm | 8.315 mm | 8.785 mm | 8.985 mm |
| C Max. digging depth | 5.255 mm | 5.870 mm | 6.430 mm | 6.715 mm |
| D Max. vertical wall digging depth | 4.110 mm | 4.535 mm | 5.250 mm | 5.440 mm |
| E Max. digging depth of cut for 2,44 m level | 5.150 mm | 5.775 mm | 6.340 mm | 6.630 mm |
| F Max. digging reach | 9.545 mm | 10.120 mm | 10.675 mm | 10.945 mm |
| G Max. digging reach at ground level | 9.345 mm | 9.935 mm | 10.495 mm | 10.770 mm |
| H Min. swing radius | 2.680 mm | 3.190 mm | 3.055 mm | 3.110 mm |

