

ENGINE

Model	Komatsu SAA6D125E-6-A
Type	Common rail direct injection, water-cooled, emissionised, turbocharged, after-cooled diesel
Engine power	
at rated engine speed	1.900 rpm
ISO 14396	270 kW/362 HP
ISO 9249 (net engine power)	268 kW/359 HP
No. of cylinders	6
Bore x stroke	125 x 150 mm
Displacement	11,04 ltr
Battery	2 x 12 V/110 Ah
Alternator	24 V/60 A
Starter motor	24 V/11 kW
Air filter type	Double element type with monitor panel dust indicator and auto dust evacuator
Cooling	Suction type cooling fan with radiator fly screen
Fan drive type	Hydraulic, reversible

HYDRAULIC SYSTEM

Type	HydrauMind. Closed-centre system with load sensing and pressure compensation valves
Additional circuits	2 additional circuits with proportional control can be installed
Main pump	2 variable displacement piston pumps supplying boom, arm, bucket, swing and travel circuits
Maximum pump flow	2 x 345 ltr/min
Relief valve settings	
Implement	380 kg/cm ²
Travel	380 kg/cm ²
Swing	285 kg/cm ²
Pilot circuit	33 kg/cm ²

UNDERCARRIAGE

Construction	X-frame centre section with box section track frames
Track assembly	
Type	Fully sealed
Shoes (each side)	46 (PC490), 49 (PC490LC)
Tension	Combined spring and hydraulic unit
Rollers	
Track rollers (each side)	7 (PC490), 8 (PC490LC)
Carrier rollers (each side)	2

OPERATING WEIGHT (APPR.)

	PC490-10		PC490LC-10	
	Operating weight	Ground pressure	Operating weight	Ground pressure
Triple grouser shoes				
600 mm	46.630 kg	0,89 kg/cm ²	46.910 kg	0,83 kg/cm ²
700 mm	47.100 kg	0,77 kg/cm ²	47.410 kg	0,72 kg/cm ²
800 mm	47.570 kg	0,68 kg/cm ²	47.910 kg	0,64 kg/cm ²
900 mm	-	-	48.400 kg	0,57 kg/cm ²
Double grouser shoes				
600 mm	46.750 kg	0,89 kg/cm ²	47.030 kg	0,83 kg/cm ²

Operating weight, including specified work equipment, 7,1 m mono boom, 3,4 m arm, 1.915 kg bucket, operator, lubricant, coolant, full fuel tank and the standard equipment.

SWING SYSTEM

Type	Axial piston motor driving through planetary double reduction gearbox
Swing lock	Electrically actuated wet multi-disc brake integrated into swing motor
Swing speed	0 - 9,4 rpm
Swing torque	132 kNm

DRIVES AND BRAKES

Steering control	2 levers with pedals giving full independent control of each track
Drive method	Hydrostatic
Travel operation	Automatic 3-speed selection
Gradeability	70%, 35°
Max. travel speeds	
Lo / Mi / Hi	3,0 / 4,2 / 5,5 km/h
Maximum drawbar pull	34.000 kg
Brake system	Hydraulically operated discs in each travel motor

SERVICE REFILL CAPACITIES

Fuel tank	650 ltr
Radiator	44,0 ltr
Engine oil	37,0 ltr
Swing drive	20,0 ltr
Hydraulic tank	248 ltr
Final drive (each side)	10,5 ltr

ENVIRONMENT

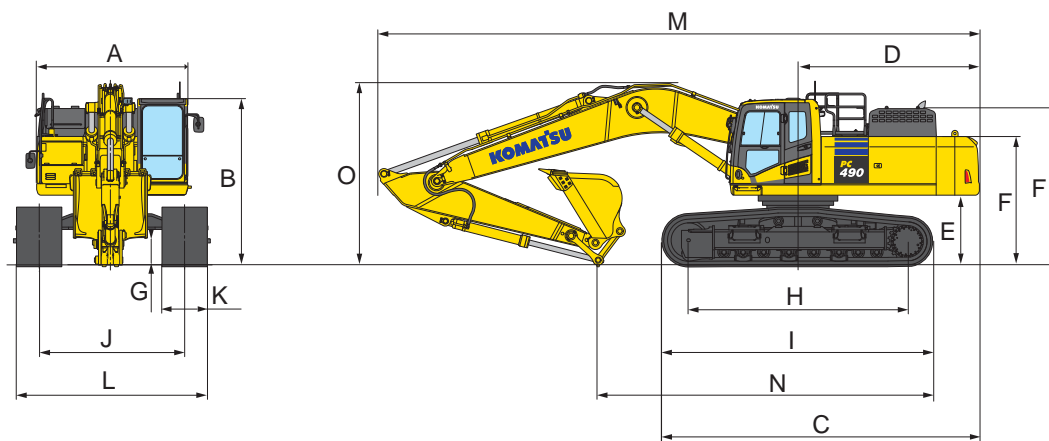
Engine emissions	Fully complies with EU Stage IIIB and EPA Tier 4 interim exhaust emission regulations
Noise levels	
LwA external	107 dB(A) (2000/14/EC Stage II)
LpA operator ear	71 dB(A) (ISO 6396 dynamic test)
Vibration levels (EN 12096:1997)*	
Hand/arm	≤ 2,5 m/s ² (uncertainty K = 0,25 m/s ²)
Body	≤ 0,5 m/s ² (uncertainty K = 0,10 m/s ²)

* for the purpose of risk assessment under directive 2002/44/EC, please refer to ISO/TR 25398:2006.

Dimensions & Performance Figures

MACHINE DIMENSIONS	PC490-10	PC490LC-10
A Overall width of upper structure	2.995 mm	2.995 mm
B Overall height of cab	3.360 mm	3.360 mm
C Overall length of basic machine	6.130 mm	6.300 mm
D Tail length	3.605 mm	3.605 mm
Tail swing radius	3.645 mm	3.645 mm
E Clearance under counterweight	1.385 mm	1.385 mm
F Machine tail height	2.490 mm	2.490 mm
F' Machine tail height (top of engine cover)	3.105 mm	3.105 mm
G Ground clearance	700 mm	700 mm
H Tumbler centre distance	4.020 mm	4.350 mm
I Track length	5.055 mm	5.385 mm
J Track gauge	2.890 mm	2.890 mm
K Track shoe width	600, 700, 800 mm	600, 700, 800, 900 mm
L Overall track width with 600 mm shoes	3.490 - *2.990 mm	3.490 - *2.990 mm
Overall track width with 700 mm shoes	3.590 - *3.090 mm	3.590 - *3.090 mm
Overall track width with 800 mm shoes	3.690 - *3.190 mm	3.690 - *3.190 mm
Overall track width with 900 mm shoes	-	3.790 - *3.290 mm

* Transport dimensions (retracted)



TRANSPORT DIMENSIONS

MONO BOOM

Arm length	2,4 m	2,9 m	3,4 m	4,0 m	4,8 m
M Transport length	11.910 mm	12.000 mm	11.930 mm	11.950 mm	11.825 mm
N Length on ground (transport) (PC490-10)	7.720 mm	7.455 mm	6.710 mm	6.130 mm	5.885 mm
Length on ground (transport) (PC490LC-10)	7.885 mm	7.620 mm	6.875 mm	6.295 mm	6.050 mm
O Overall height (to top of boom)	3.875 mm	3.760 mm	3.635 mm	3.885 mm	4.435 mm

TRANSPORT DIMENSIONS

SHORT BOOM

Arm length	2,4 m	2,9 m
M Transport length	11.470 mm	11.570 mm
N Length on ground (transport) (PC490-10)	7.675 mm	7.210 mm
Length on ground (transport) (PC490LC-10)	7.840 mm	7.380 mm
O Overall height (to top of boom)	3.630 mm	3.710 mm

**PC490-10 / MAX. BUCKET CAPACITY AND WEIGHT**

MONO BOOM						
Arm length	2,4 m	2,9 m	3,4 m	4,0 m	4,8 m	
Material weight up to 1,2 t/m ³	2,76 m ³ 2.175 kg	2,76 m ³ 2.175 kg	2,76 m ³ 2.175 kg	2,76 m ³ 2.175 kg	2,76 m ³ 2.175 kg	2,76 m ³ 2.175 kg
Material weight up to 1,5 t/m ³	2,76 m ³ 2.175 kg	2,76 m ³ 2.175 kg	2,76 m ³ 2.175 kg	2,76 m ³ 2.175 kg	2,76 m ³ 2.175 kg	2,74 m ³ 2.175 kg
Material weight up to 1,8 t/m ³	2,76 m ³ 2.175 kg	2,76 m ³ 2.175 kg	2,71 m ³ 2.175 kg	2,71 m ³ 2.175 kg	2,39 m ³ 2.015 kg	

PC490-10 / MAX. BUCKET CAPACITY AND WEIGHT

SHORT BOOM			
Arm length	2,4 m	2,9 m	
Material weight up to 1,2 t/m ³	3,50 m ³ 2.450 kg	3,50 m ³ 2.450 kg	
Material weight up to 1,5 t/m ³	3,50 m ³ 2.450 kg	3,50 m ³ 2.450 kg	
Material weight up to 1,8 t/m ³	3,18 m ³ 2.432 kg	2,95 m ³ 2.308 kg	

PC490LC-10 / MAX. BUCKET CAPACITY AND WEIGHT

MONO BOOM						
Arm length	2,4 m	2,9 m	3,4 m	4,0 m	4,8 m	
Material weight up to 1,2 t/m ³	2,76 m ³ 2.175 kg	2,76 m ³ 2.175 kg	2,76 m ³ 2.175 kg	2,76 m ³ 2.175 kg	2,76 m ³ 2.175 kg	2,76 m ³ 2.175 kg
Material weight up to 1,5 t/m ³	2,76 m ³ 2.175 kg	2,76 m ³ 2.175 kg	2,76 m ³ 2.175 kg	2,76 m ³ 2.175 kg	2,76 m ³ 2.175 kg	2,76 m ³ 2.175 kg
Material weight up to 1,8 t/m ³	2,76 m ³ 2.175 kg	2,76 m ³ 2.175 kg	2,76 m ³ 2.175 kg	2,75 m ³ 2.175 kg	2,45 m ³ 2.048 kg	

PC490LC-10 / MAX. BUCKET CAPACITY AND WEIGHT

SHORT BOOM			
Arm length	2,4 m	2,9 m	
Material weight up to 1,2 t/m ³	3,50 m ³ 2.450 kg	3,50 m ³ 2.450 kg	
Material weight up to 1,5 t/m ³	3,50 m ³ 2.450 kg	3,50 m ³ 2.450 kg	
Material weight up to 1,8 t/m ³	3,50 m ³ 2.450 kg	3,50 m ³ 2.450 kg	

Max. capacity and weight have been calculated according to ISO 10567:2007.

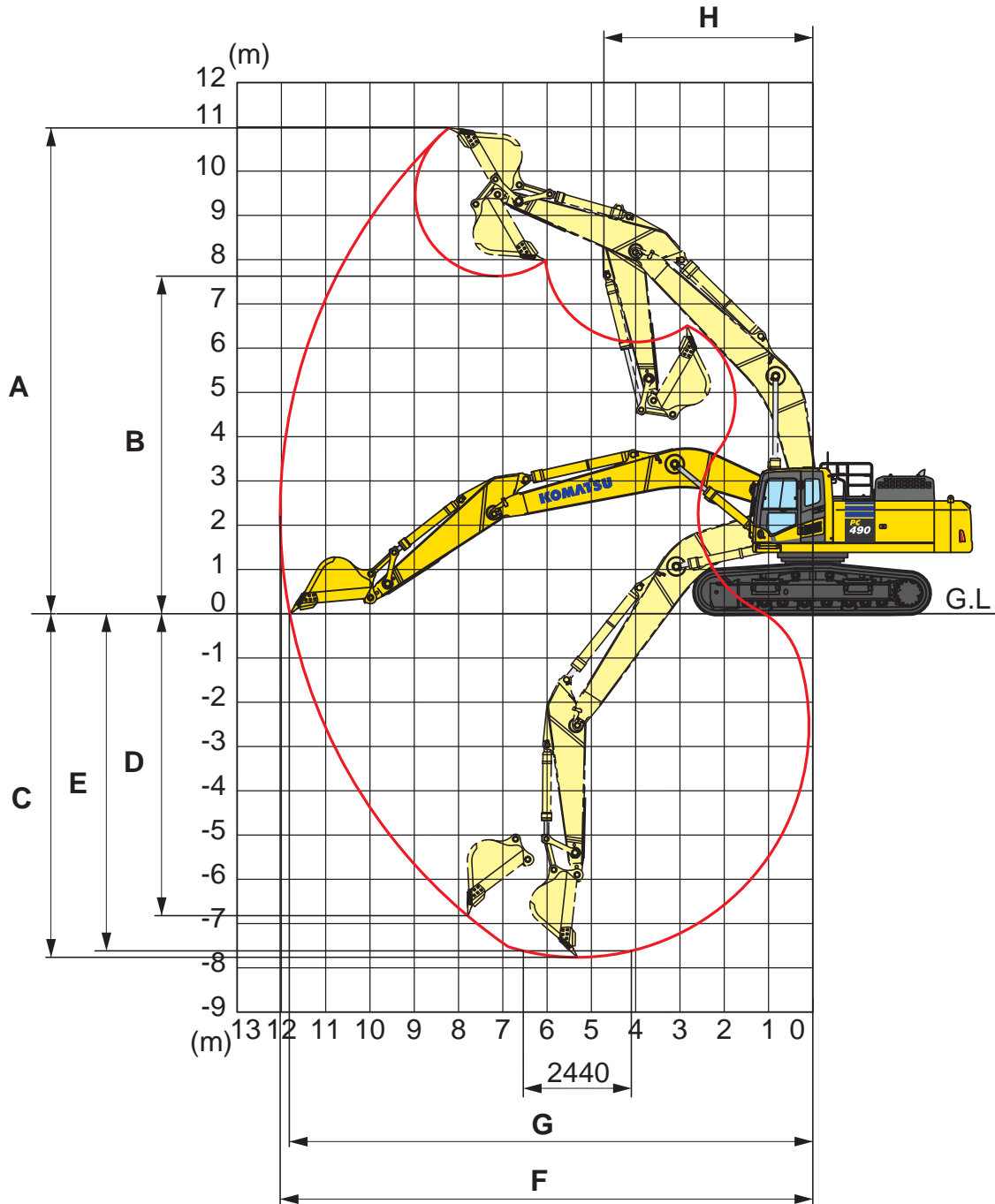
Please consult with your distributor for the correct selection of buckets and attachments to suit the application.

BUCKET AND ARM FORCE

Arm length	2,4 m	2,9 m	3,4 m	4,0 m	4,8 m
Bucket digging force	26.100 kg	26.100 kg	26.100 kg	26.100 kg	26.100 kg
Bucket digging force at PowerMax	28.000 kg	28.000 kg	28.000 kg	28.000 kg	28.000 kg
Arm crowd force	24.200 kg	24.400 kg	20.400 kg	18.100 kg	15.800 kg
Arm crowd force at PowerMax	25.900 kg	26.200 kg	21.800 kg	19.400 kg	17.000 kg

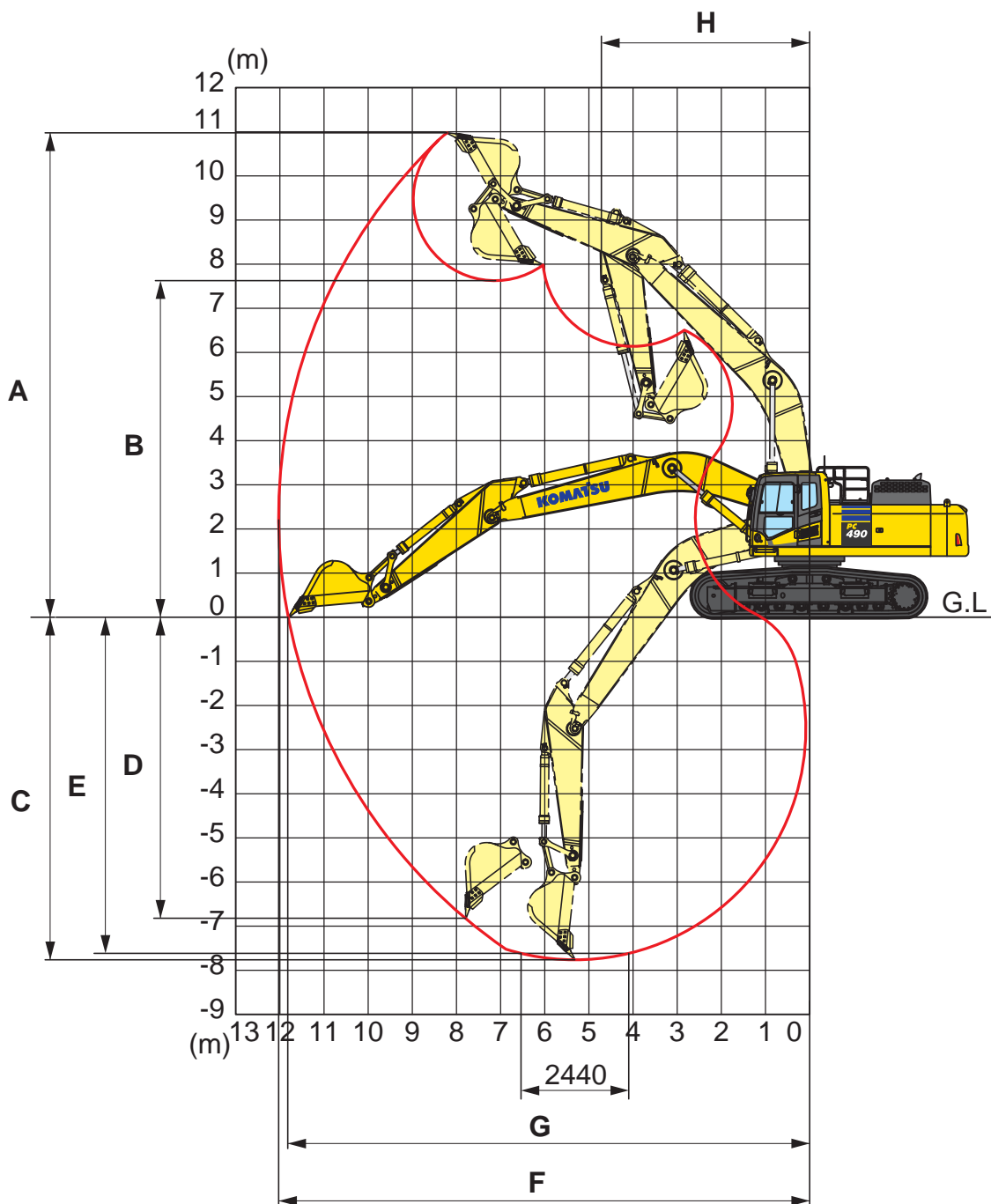
Working Range

MONO BOOM



ARM LENGTH	2,4 m	2,9 m	3,4 m	4,0 m	4,8 m
A Max. digging height	10.375 mm	10.350 mm	10.980 mm	11.090 mm	11.550 mm
B Max. dumping height	7.135 mm	7.145 mm	7.630 mm	7.780 mm	8.210 mm
C Max. digging depth	6.780 mm	7.280 mm	7.755 mm	8.380 mm	9.190 mm
D Max. vertical wall digging depth	5.240 mm	5.635 mm	6.805 mm	7.220 mm	8.085 mm
E Max. digging depth of cut for 2,44 m level	6.585 mm	7.090 mm	7.615 mm	8.250 mm	9.080 mm
F Max. digging reach	11.080 mm	11.445 mm	12.030 mm	12.565 mm	13.365 mm
G Max. digging reach at ground level	10.840 mm	11.215 mm	11.810 mm	12.355 mm	13.170 mm
H Min. swing radius	4.835 mm	4.810 mm	4.735 mm	4.800 mm	4.885 mm

SHORT BOOM



ARM LENGTH	2,4 m	2,9 m
A Max. digging height	10.510 mm	10.550 mm
B Max. dumping height	7.075 mm	7.115 mm
C Max. digging depth	6.365 mm	6.865 mm
D Max. vertical wall digging depth	4.365 mm	4.950 mm
E Max. digging depth of cut for 2,44 m level	5.630 mm	6.710 mm
F Max. digging reach	10.605 mm	10.985 mm
G Max. digging reach at ground level	10.360 mm	10.750 mm
H Min. swing radius	4.265 mm	4.295 mm

