

# SPECIFICATIONS



## ENGINE

Model..... Komatsu SAA6D140E-5  
 Type..... Common rail direct injection, water-cooled, emissionised, turbocharged, after-cooled diesel  
 Engine power  
 at rated engine speed ..... 1.800 rpm  
 ISO 14396..... 323 kW / 433 HP  
 ISO 9249 (net engine power)..... 320 kW / 429 HP  
 No. of cylinders ..... 6  
 Bore x stroke ..... 140 x 165 mm  
 Displacement..... 15,24 ltr  
 Governor..... All-speed, electronic



## HYDRAULIC SYSTEM

Type..... Open-center load-sensing system  
 Number of selectable working modes ..... 2  
 Main pump..... Variable-capacity piston pump  
 Pumps for ..... Boom, arm, bucket, swing, and travel circuits  
 Maximum pump flow..... 2 x 410 ltr/min  
 Supply for control circuit ..... Gear pump  
 Hydraulic motors:  
 Travel..... 2 x axial piston motor with parking brake  
 Swing ..... 2 x axial piston motor with swing holding brake  
 Relief valve settings:  
 Standard ..... 325 kg/cm<sup>2</sup>  
 Travel circuit ..... 350 kg/cm<sup>2</sup>  
 Swing circuit..... 260 kg/cm<sup>2</sup>  
 Lifting circuit..... 350 kg/cm<sup>2</sup>  
 Pilot circuit..... 30 kg/cm<sup>2</sup>  
 Hydraulic cylinders (No. of cylinders – bore x stroke):  
 Boom..... 2 – 185 mm x 1.725 mm  
 Arm ..... 1 – 200 mm x 2.045 mm  
 Bucket (for 3,5 m arm) ..... 1 – 185 mm x 1.425 mm  
 Bucket (for 2,9 m arm) ..... 1 – 185 mm x 1.610 mm



## COOLANT AND LUBRICANT CAPACITY (REFILLING)

Fuel tank..... 880 ltr  
 Radiator..... 58 ltr  
 Engine oil..... 40 ltr  
 Swing drive (2)..... 13 ltr  
 Hydraulic tank..... 360 ltr  
 Final drive (each side) ..... 10 ltr



## OPERATING WEIGHT (APPR.)

Operating weight, including 6.600 mm one-piece boom, 2.900 mm arm, 2.500 kg backhoe bucket, operator, lubricant, coolant, full fuel tank and the standard equipment.



## SWING SYSTEM

Type..... Hydraulic motor  
 Swing reduction..... Planetary gear  
 Swing circle lubrication..... Grease-bathed  
 Swing lock ..... Oil disc brake  
 Swing speed..... 8,3 rpm



## DRIVES AND BRAKES

Steering control ..... 2 levers with pedals  
 Drive method ..... Hydrostatic  
 Travel motor..... Axial piston motor, in-shoe design  
 Reduction system..... Planetary double reduction  
 Max. drawbar pull ..... 42.300 kg  
 Gradeability ..... 70%  
 Max. travel speeds  
 Lo / Hi..... 3,0 / 4,9 km/h  
 Service brake..... Hydraulic lock  
 Parking brake..... Oil disc brake



## UNDERCARRIAGE

Construction ..... H-leg frame  
 with box section track-frames  
 Track assembly  
 Type..... Fully sealed  
 Shoes (each side) ..... 49 (PC600), 52 (PC600LC)  
 Tension..... Hydraulic  
 Rollers  
 Track rollers (each side) ..... 8 (PC600), 9 (PC600LC)  
 Carrier rollers (each side) ..... 3

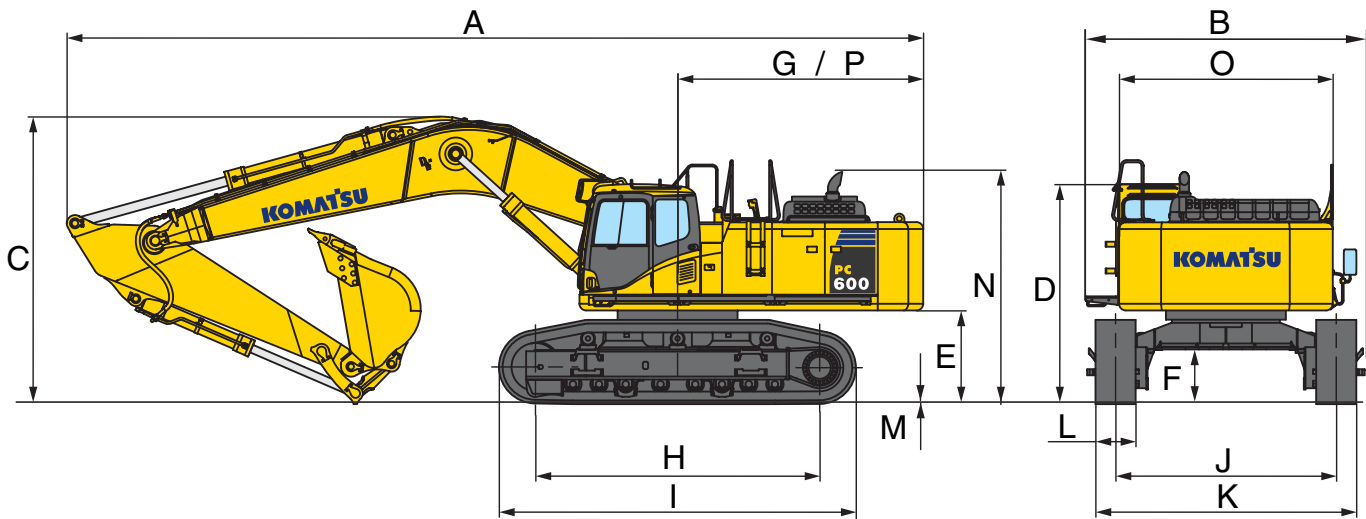


## ENVIRONMENT

Engine emissions ..... Fully complies with EU Stage IIIA and EPA Tier III exhaust emission regulations  
 Noise levels  
 LwA external ..... 108 dB(A) (2000/14/EC Stage II)  
 LpA operator ear ..... 75 dB(A) (ISO 6396 dynamic test)  
 Vibration levels (EN 12096:1997)\*  
 Hand/arm ..... ≤ 2,5 m/s<sup>2</sup> (uncertainty K = 1,06 m/s<sup>2</sup>)  
 Body..... ≤ 0,5 m/s<sup>2</sup> (uncertainty K = 1,15 m/s<sup>2</sup>)  
 \* for the purpose of risk assessment under directive 2002/44/EC, please refer to ISO/TR 25398:2006.

MONO BOOM				
Triple grouser shoes	PC600-8		PC600LC-8	
	Operating weight	Ground pressure	Operating weight	Ground pressure
600 mm	57.640 kg	1,03 kg/cm <sup>2</sup>	58.640 kg	0,98 kg/cm <sup>2</sup>
750 mm	58.460 kg	0,84 kg/cm <sup>2</sup>	59.520 kg	0,79 kg/cm <sup>2</sup>
900 mm	–	–	60.380 kg	0,67 kg/cm <sup>2</sup>

# MACHINE DIMENSIONS

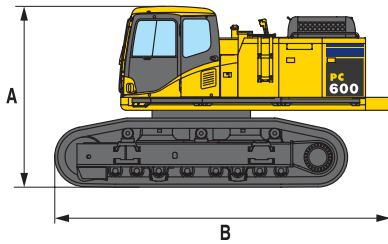


BOOM LENGTH		7.660 mm	6.600 mm	7.300 mm
ARM LENGTH		3.500 mm	2.900 mm	3.500 mm
A	Overall length	12.810 mm	11.830 mm	12.440 mm
B	Overall width	4.210 mm	4.210 mm	4.210 mm
C	Overall height (to top of boom)	4.300 mm	4.600 mm	4.280 mm
D	Overall height (to top of cab)	3.290 mm	3.290 mm	3.290 mm
E	Clearance under counterweight	1.365 mm	1.365 mm	1.365 mm
F	Minimum ground clearance	780 mm	780 mm	780 mm
G	Tail swing radius	3.800 mm	3.800 mm	3.800 mm
H	Track length on ground	4.600 mm	4.250 mm	4.250 mm
I	Track length	5.690 mm	5.340 mm	5.340 mm
J	Track gauge	2.590 mm	2.590 mm	2.590 mm
	Track gauge at expanded position	3.300 mm	3.300 mm	3.300 mm
K	Width of crawler	3.900 mm	3.900 mm	3.900 mm
	Width of crawler (when retracted)	3.190 mm	3.190 mm	3.190 mm
L	Track shoe width	600 mm	600 mm	600 mm
M	Grouser height	37 mm	37 mm	37 mm
N	Machine cab height	3.435 mm	3.435 mm	3.435 mm
O	Machine cab width	3.195 mm	3.195 mm	3.195 mm
P	Distance, swing center to rear end	3.675 mm	3.675 mm	3.675 mm

BUCKET AND ARM FORCE (ISO)		
Arm length	3.500 mm	2.900 mm
Bucket digging force	30.000 kg	34.300 kg
Bucket digging force at PowerMax	32.300 kg	36.900 kg
Arm crowd force	23.300 kg	27.700 kg
Arm crowd force at PowerMax	25.100 kg	29.900 kg

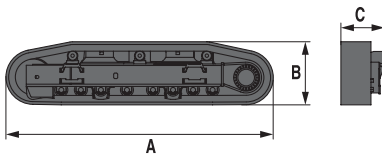
# DIMENSIONS

## UPPER STRUCTURE + UNDERCARRIAGE



	PC600-8	PC600LC-8
Overall width	3.195 mm	3.195 mm
A	3.330 mm	3.330 mm
B	6.170 mm	6.340 mm
Weight	34.240 kg	35.240 kg

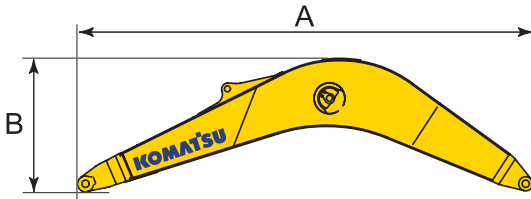
## UNDERCARRIAGE



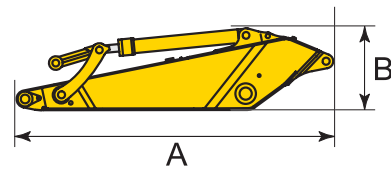
	PC600-8	PC600LC-8
A	5.340 mm	5.690 mm
B	1.260 mm	1.260 mm
C	875 mm	875 mm
Weight	16.400 kg	17.400 kg

## WORK EQUIPMENT

Boom



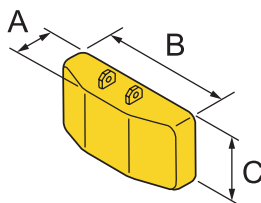
Arm



BOOM	6.600 mm	7.300 mm	7.600 mm
Overall width	1.190 mm	1.190 mm	1.190 mm
A	6.870 mm	7.545 mm	7.925 mm
B	2.095 mm	1.960 mm	2.040 mm
Weight (incl. arm cylinder)	5.300 kg	5.300 kg	5.400 kg

ARM	2.900 mm	3.500 mm
Overall width	480 mm	480 mm
A	4.285 mm	4.885 mm
B	1.430 mm	1.240 mm
Weight (incl. bucket cylinder & linkage)	3.400 kg	3.300 kg

## COUNTERWEIGHT



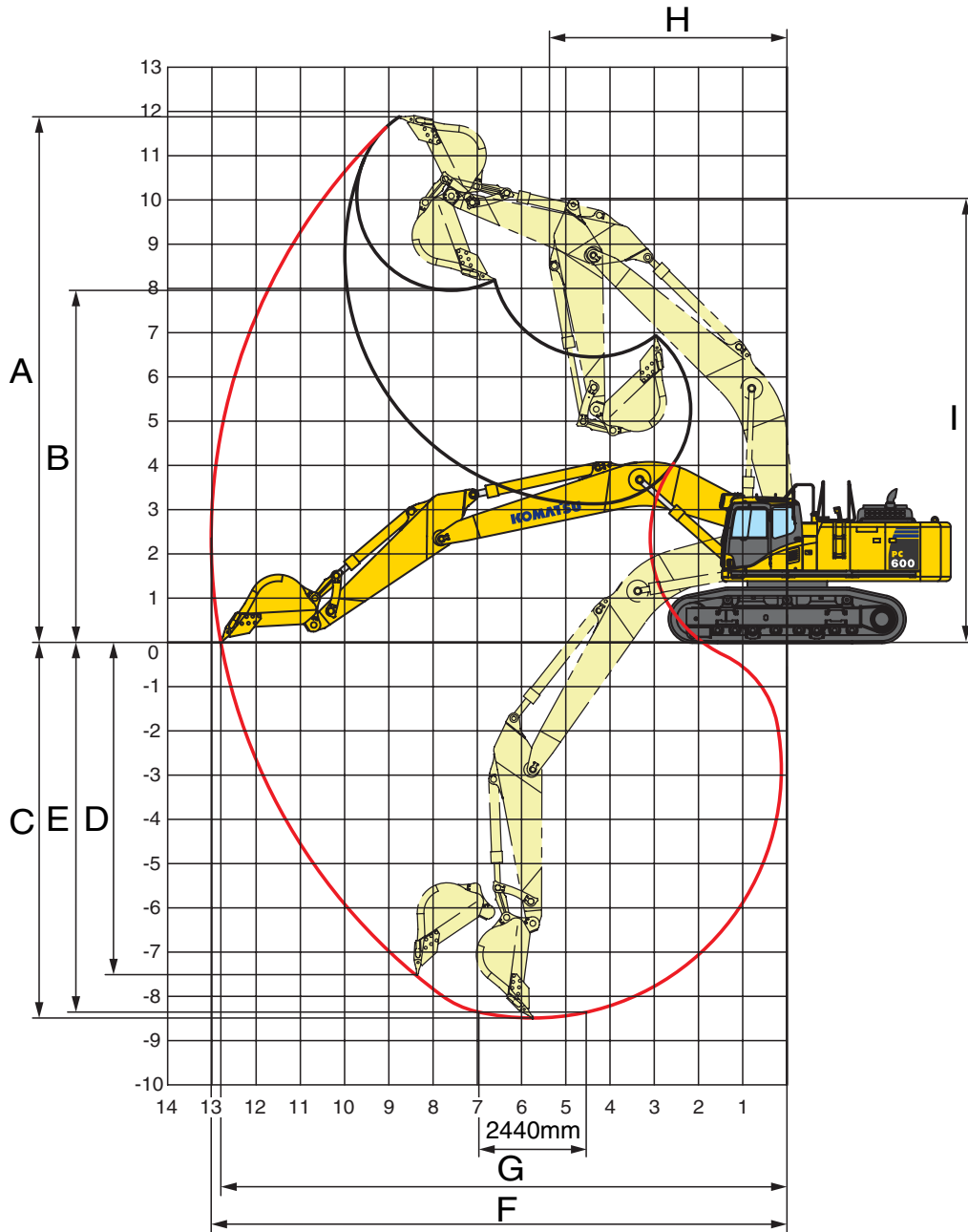
COUNTERWEIGHT	
A	680 mm
B	3.195 mm
C	1.330 mm
Weight	10.750 kg

## CYLINDERS

Boom & arm cylinders

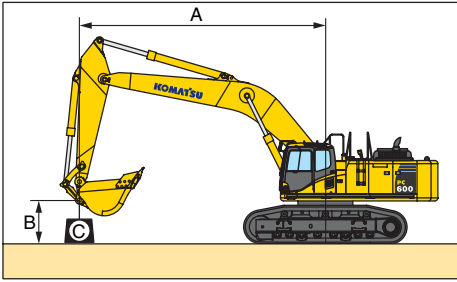
BOOM & ARM CYLINDERS	
Weight	1.800 kg

# WORKING RANGE



BOOM LENGTH		7.660 mm	6.600 mm	7.300 mm
ARM LENGTH		3.500 mm	2.900 mm	3.500 mm
A	Max. digging height	11.880 mm	11.140 mm	11.475 mm
B	Max. dumping height	7.960 mm	7.210 mm	7.650 mm
C	Max. digging depth	8.490 mm	7.060 mm	8.165 mm
D	Max. vertical wall digging depth	7.510 mm	5.630 mm	6.660 mm
E	Max. digging depth of cut for 2,44 m level	8.360 mm	6.910 mm	8.030 mm
F	Max. digging reach	13.020 mm	11.550 mm	12.615 mm
G	Max. digging reach at ground level	12.800 mm	11.300 mm	12.385 mm
H	Min. swing radius	5.370 mm	4.670 mm	5.090 mm
I	Max. height of min. swing radius	10.020 mm	9.300 mm	9.745 mm

# LIFTING CAPACITY



- A** – Reach from swing centre
- B** – Bucket hook height
- C** – Lifting capacities

- Rating over front
- Rating over side
- Rating at maximum reach

Arm length	A			9,1 m		7,6 m		6,1 m		4,6 m		3,0 m	

## PC600-8

L Mode: OFF

Boom: 7.300 mm  With 600 mm shoes	9,1 m	kg	*6.500	*6.500										
	6,1 m	kg	*6.350	*6.350	*9.650	9.300	*10.700	*10.700						
	3,0 m	kg	*7.150	6.200	*11.000	8.600	*13.200	11.950	*16.900	*16.900	*24.200	*24.200		
	0,0 m	kg	8.400	6.150	10.700	7.950	14.500	10.750	*19.600	15.400	*21.300	*21.300		
	-3,0 m	kg	10.300	7.600	10.550	7.850	*14.100	10.500	*18.250	15.150	*24.150	*24.150	*21.900	*21.900
	-6,1 m	kg	*9.500	*9.500										

L Mode: ON

Boom: 7.300 mm  With 600 mm shoes	9,1 m	kg	*8.150	*8.150										
	6,1 m	kg	*7.950	7.450	12.150	9.300	*13.450	13.350						
	3,0 m	kg	8.350	6.200	11.400	8.600	15.700	11.950	*21.000	17.400	*29.850	27.900		
	0,0 m	kg	8.400	6.150	10.700	7.950	14.500	10.750	20.950	15.400	*25.450	24.800		
	-3,0 m	kg	10.300	7.600	10.550	7.850	14.200	10.500	20.650	15.150	*30.200	24.900	*26.150	*26.150
	-6,1 m	kg	*12.450	*12.450										

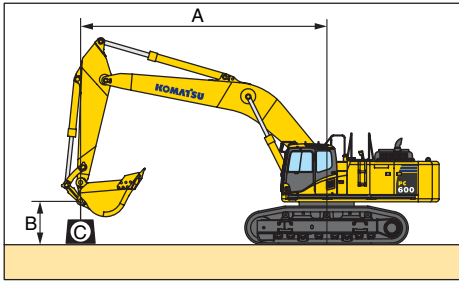
L Mode: OFF

Boom: 6.600 mm  With 600 mm shoes	9,1 m	kg	*9.700	*9.700										
	6,1 m	kg	*8.950	*8.950			*11.950	*11.950						
	3,0 m	kg	*9.800	7.600	11.400	8.600	*14.000	12.000	*17.650	17.600	*24.700	*24.700		
	0,0 m	kg	10.300	7.650	10.850	8.050	14.700	10.950	*19.900	15.700	*27.600	25.250		
	-3,0 m	kg	*11.500	10.050			*12.850	10.900	*16.800	14.950	*22.950	*22.950	*30.500	*30.500
	-4,6 m	kg	*10.650	*10.650										

L Mode: ON

Boom: 6.600 mm  With 600 mm shoes	9,1 m	kg	*11.850	*11.850										
	6,1 m	kg	*10.950	9.400			*14.950	13.200						
	3,0 m	kg	10.150	7.600	11.400	8.600	15.800	12.000	*21.850	17.600	*30.400	28.400		
	0,0 m	kg	10.300	7.650	10.850	8.050	14.700	10.950	21.300	15.700	*34.200	25.250		
	-3,0 m	kg	13.450	10.050			14.650	10.900	20.450	14.950	*28.700	25.500	*36.700	*36.700
	-4,6 m	kg	*13.800	13.750										

\* Load is limited by hydraulic capacity rather than tipping. Ratings are based on SAE Standard No. J/ISO 10567. Rated loads do not exceed 87% of hydraulic lift capacity or 75% of tipping load.



- A – Reach from swing centre
- B – Bucket hook height
- C – Lifting capacities

- Rating over front
- Rating over side
- Rating at maximum reach

Arm length	A			9,1 m		7,6 m		6,1 m		4,6 m		3,0 m	

## PC600LC-8

L Mode: OFF

Boom: 7.660 mm	9,1 m	kg	*6.950											
	6,1 m	kg	*6.850	*6.850	*9.800	*9.800	*10.950	*10.950						
	3,0 m	kg	*7.550	6.200	*11.200	9.050	*13.500	12.350	*17.100	*17.100				
With 600 mm shoes	0,0 m	kg	9.350	6.150	*12.250	8.350	*15.100	11.050	*19.850	15.750	*16.550	*16.550		
	-3,0 m	kg	*10.150	7.400	*11.400	8.200	*14.350	10.750	*18.550	15.550	*24.150	*24.150	*19.450	*19.450
	-6,1 m	kg	*9.550	*9.550					*11.950	*11.950	*15.700	*15.700		

L Mode: ON

Boom: 7.660 mm	9,1 m	kg	*8.600											
	6,1 m	kg	*8.450	7.350	*12.350	9.850	*13.650	*13.650						
	3,0 m	kg	*9.300	6.200	13.300	9.050	*16.850	12.350	*21.300	17.350				
With 600 mm shoes	0,0 m	kg	9.350	6.150	12.550	8.350	16.700	11.050	24.350	15.750	*19.800	*19.800		
	-3,0 m	kg	*11.200	7.400	12.400	8.200	16.400	10.750	*23.200	15.550	*30.150	25.400	*23.200	*23.200
	-6,1 m	kg	*12.400	*12.400					*15.400	*15.400	*20.100	*20.100		

\* Load is limited by hydraulic capacity rather than tipping. Ratings are based on SAE Standard No. J/ISO 10567. Rated loads do not exceed 87% of hydraulic lift capacity or 75% of tipping load.

MAX. BUCKET CAPACITY AND WEIGHT					
Arm length	PC600-8				
	2,9 m (6,6 m boom)		3,5 m (7,3 m boom)		–
Material weight up to 1,2 t/m <sup>3</sup>	5,25 m <sup>3</sup>	4.225 kg	4,20 m <sup>3</sup>	3.375 kg	–
Material weight up to 1,5 t/m <sup>3</sup>	4,20 m <sup>3</sup>	3.375 kg	3,36 m <sup>3</sup>	2.700 kg	–
Material weight up to 1,8 t/m <sup>3</sup>	3,50 m <sup>3</sup>	2.825 kg	2,80 m <sup>3</sup>	2.250 kg	–
Arm length	PC600LC-8				
	2,9 m (6,6 m boom)		3,5 m (7,3 m boom)		3,5 m (7,6 m boom)
Material weight up to 1,2 t/m <sup>3</sup>	5,25 m <sup>3</sup>	4.225 kg	4,20 m <sup>3</sup>	3.375 kg	4,05 m <sup>3</sup> 3.250 kg
Material weight up to 1,5 t/m <sup>3</sup>	4,20 m <sup>3</sup>	3.375 kg	3,36 m <sup>3</sup>	2.700 kg	3,24 m <sup>3</sup> 2.600 kg
Material weight up to 1,8 t/m <sup>3</sup>	3,50 m <sup>3</sup>	2.825 kg	2,80 m <sup>3</sup>	2.250 kg	2,70 m <sup>3</sup> 2.175 kg

Max capacity and weight have been calculated according to ISO 10567:2007.

Please consult with your distributor for the correct selection of buckets and attachments to suit the application.