

ENGINE

Model Komatsu SAA6D140E-5
 Type Common rail direct injection, water-cooled,
 cooled EGR, turbocharged, after-cooled diesel
 Engine power
 at rated engine speed 1.800 rpm
 ISO 14396 370 kW / 496 HP
 ISO 9249 (net engine power) 363 kW / 487 HP
 No. of cylinders 6
 Bore × stroke 140 × 165 mm
 Displacement 15,24 ltr
 Fan drive type Hydraulic, reversible

HYDRAULIC SYSTEM

Type Open-center load-sensing system
 Additional circuits Additional hydraulic function (preparation),
 double acting only
 Number of selectable working modes 2
 Main pump Variable capacity piston pump
 Pumps for Boom, arm, bucket, swing, and travel circuits
 Maximum pump flow 2 × 494 ltr/min
 Fan drive pump Variable capacity piston pump
 Hydraulic motors:
 Travel 2 × axial piston motor with parking brake
 Swing 2 × axial piston motor with swing holding brake
 Relief valve settings
 Implement circuits 320 bar
 Travel circuit 350 bar
 Swing circuit 290 bar
 Heavy lift circuit 350 bar
 Pilot circuit 30 bar

UNDERCARRIAGE

Construction H-leg frame with box section track-frames
 Track assembly
 Type Fully sealed
 Shoes (each side) 47 (PC800LC-8: 51)
 Tension Hydraulic
 Rollers
 Track rollers (each side) 8 (PC800LC-8: 9)
 Carrier rollers (each side) 3

OPERATING WEIGHT (APPR.)

Work equipment	PC800-8				PC800LC-8			
	7,1 m boom / 2,9 m arm / 4,0 m ³ bucket (SAE)		8,0 m boom / 3,6 m arm / 3,4 m ³ bucket (SAE)		7,1 m boom / 2,9 m arm / 4,0 m ³ bucket (SAE)		8,0 m boom / 3,6 m arm / 3,4 m ³ bucket (SAE)	
Wide double grouser shoes	Operating weight	Ground pressure	Operating weight	Ground pressure	Operating weight	Ground pressure	Operating weight	Ground pressure
610 mm	78.800 kg	1,30 kg/m ²	79.700 kg	1,31 kg/m ²	-	-	-	-
710 mm	79.500 kg	1,12 kg/m ²	80.400 kg	1,14 kg/m ²	81.000 kg	1,04 kg/m ²	81.900 kg	1,05 kg/m ²
810 mm	80.200 kg	0,99 kg/m ²	81.100 kg	1,00 kg/m ²	81.700 kg	0,92 kg/m ²	82.600 kg	0,93 kg/cm ²
910 mm	80.900 kg	0,89 kg/m ²	81.800 kg	0,90 kg/m ²	82.400 kg	0,82 kg/m ²	83.300 kg	0,83 kg/m ²
1.010 mm	-	-	-	-	83.100 kg	0,75 kg/m ²	84.000 kg	0,76 kg/cm ²
1.110 mm	-	-	-	-	83.800 kg	0,69 kg/m ²	84.700 kg	0,69 kg/cm ²

Operating weight, including boom, arm, bucket, operator, lubricant, coolant, full fuel tank and the standard equipment.

SWING SYSTEM

Type Hydraulic motor
 Swing reduction Planetary gear
 Swing circle lubrication Grease-bathed
 Swing lock Oil disc brake
 Swing speed 6,8 rpm

DRIVES AND BRAKES

Steering control 2 levers with pedals
 Drive method Fully hydrostatic
 Travel motor Axial piston motor, in-shoe design
 Reduction system Planetary double reduction
 Max. drawbar pull 57.000 kg
 Gradeability 70%
 Max. travel speeds
 Lo / Hi 2,8 / 4,2 km/h
 Service brake Hydraulic lock
 Parking brake Oil disc brake

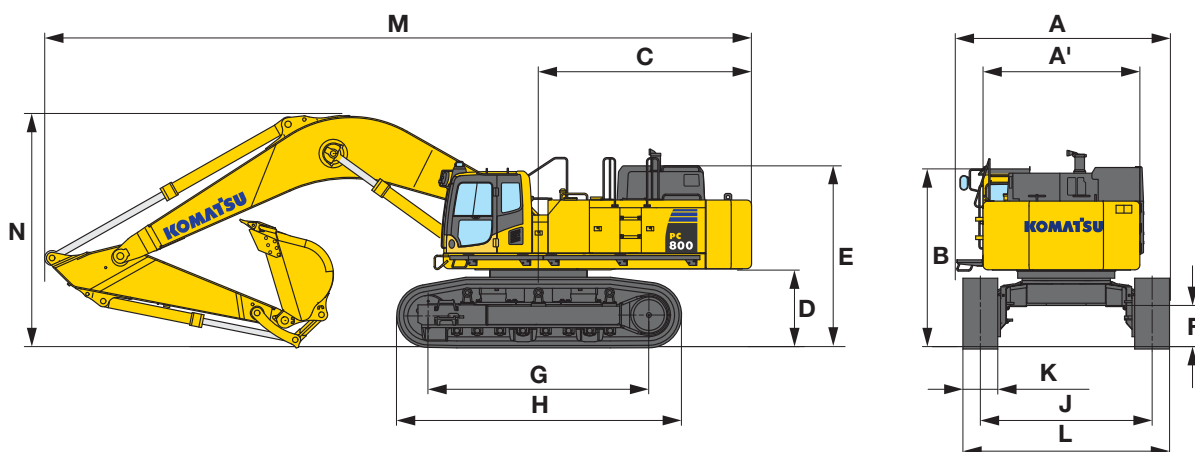
SERVICE REFILL CAPACITIES

Fuel tank 980 ltr
 Radiator 100 ltr
 Engine oil 53 ltr
 Swing drive 2 × 24,5 ltr
 Hydraulic tank 470 ltr
 Final drive (each side) 20 ltr
 PTO case 6 ltr

ENVIRONMENT

Engine emissions Fully complies with EU Stage IIIA and
 EPA Tier III exhaust emission regulations
 Noise levels
 LwA external 108 dB(A) (2000/14/EC Stage 2)
 LpA operator ear 73 dB(A) (ISO 6396 dynamic test)
 Vibration levels (EN 12096:1997)*
 Hand/arm ≤ 2,5 m/s² (uncertainty K = 0,20 m/s²)
 Body ≤ 0,5 m/s² (uncertainty K = 0,04 m/s²)
 * for the purpose of risk assessment under directive 2002/44/EC,
 please refer to ISO/TR 25398:2006.

Dimensions & Performance Figures



MODEL	PC800LC-8		PC800-8	
	8,0 m	7,1 m	8,0 m	7,1 m
Boom length	8,0 m	7,1 m	8,0 m	7,1 m
Arm length	3,6 m	2,9 m	3,6 m	2,9 m
A Overall width of upper structure (incl. catwalk)	4.335 mm	4.335 mm	4.335 mm	4.335 mm
A' Machine cab width	3.265 mm	3.265 mm	3.265 mm	3.265 mm
B Overall height of cab (to top of Komtrax antenna)	3.720 mm	3.720 mm	3.720 mm	3.720 mm
C Tail swing radius	4.400 mm	4.400 mm	4.400 mm	4.400 mm
D Clearance under counterweight	1.560 mm	1.560 mm	1.560 mm	1.560 mm
E Machine tail height (to top of engine cover)	3.665 mm	3.665 mm	3.665 mm	3.665 mm
F Ground clearance	840 mm	840 mm	840 mm	840 mm
G Tumbler center distance	5.020 mm	5.020 mm	4.500 mm	4.500 mm
H Track length	6.327 mm	6.327 mm	5.810 mm	5.810 mm
J Track gauge (working position)	3.500 mm	3.500 mm	3.500 mm	3.500 mm
K Track shoe width	710 mm	710 mm	610 mm	610 mm
L Width of crawler	4.210 mm	4.210 mm	4.110 mm	4.110 mm
Width of crawler (when retracted)	3.490 mm	3.490 mm	3.390 mm	3.390 mm
M Overall length	13.995 mm	13.130 mm	13.995 mm	13.130 mm
N Overall height (to top of boom)	4.850 mm	4.615 mm	4.850 mm	4.615 mm

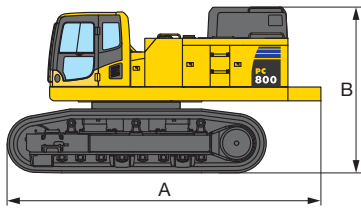
MAX. BUCKET CAPACITY AND WEIGHT

	PC800-8				PC800LC-8			
	2,9 m (7,1 m boom)		3,6 m (8,0 m boom)		2,9 m (7,1 m boom)		3,6 m (8,0 m boom)	
Material weight up to 1,2 t/m ³	6,55 m ³	4.225 kg	5,31 m ³	3.950 kg	6,91 m ³	4.300 kg	5,60 m ³	4.025 kg
Material weight up to 1,5 t/m ³	5,40 m ³	3.975 kg	4,38 m ³	3.750 kg	5,70 m ³	4.025 kg	4,61 m ³	3.800 kg
Material weight up to 1,8 t/m ³	4,60 m ³	3.800 kg	3,73 m ³	3.625 kg	4,85 m ³	3.850 kg	3,93 m ³	3.650 kg

Max. capacity and weight have been calculated according to ISO 10567:2007.

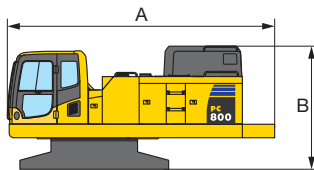
Please consult with your distributor for the correct selection of buckets and attachments to suit the application.

UPPER STRUCTURE + UNDERCARRIAGE



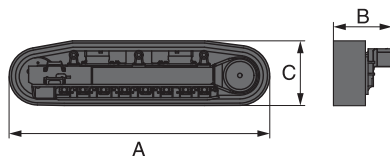
	PC800-8	PC800LC-8
A Length	6.900 mm	7.160 mm
B Height	3.890 mm	3.890 mm
Overall width	3.535 mm	3.535 mm
Weight	49.500 kg	51.700 kg

UPPER STRUCTURE



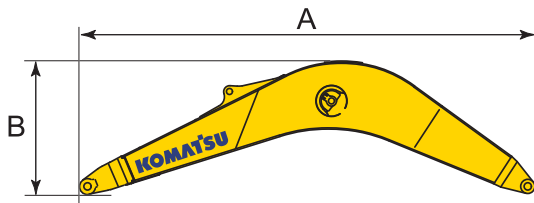
	PC800/LC-8
A Length	6.040 mm
B Total height	3.005 mm
Overall width	3.295 mm
Weight	27.000 kg

UNDERCARRIAGE



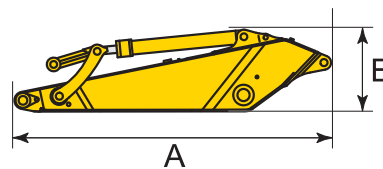
	PC800-8	PC800LC-8
Quantity	2	2
A Length	5.810 mm	6.330 mm
B Overall width	1.000 mm	1.000 mm
C Height	1.445 mm	1.445 mm
Weight	22.000 kg (2 × 11.000 kg)	24.200 kg (2 × 12.100 kg)

Boom



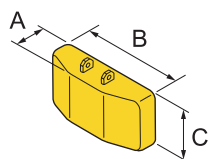
	7,1 m	8,0 m
A Length	7.430 mm	8.380 mm
B Height	2.695 mm	2.695 mm
Overall width	1.500 mm	1.500 mm
Weight	7.300 kg	8.200 kg

Arm



	2,9 m	3,6 m
A Length	4.080 mm	5.120 mm
B Height	1.695 mm	1.420 mm
Overall width	750 mm	750 mm
Weight	4.900 kg	4.900 kg

COUNTERWEIGHT



	PC800/LC-8
A Width	950 mm
B Length	3.195 mm
C Height	1.540 mm
Weight	11.850 kg

CYLINDERS

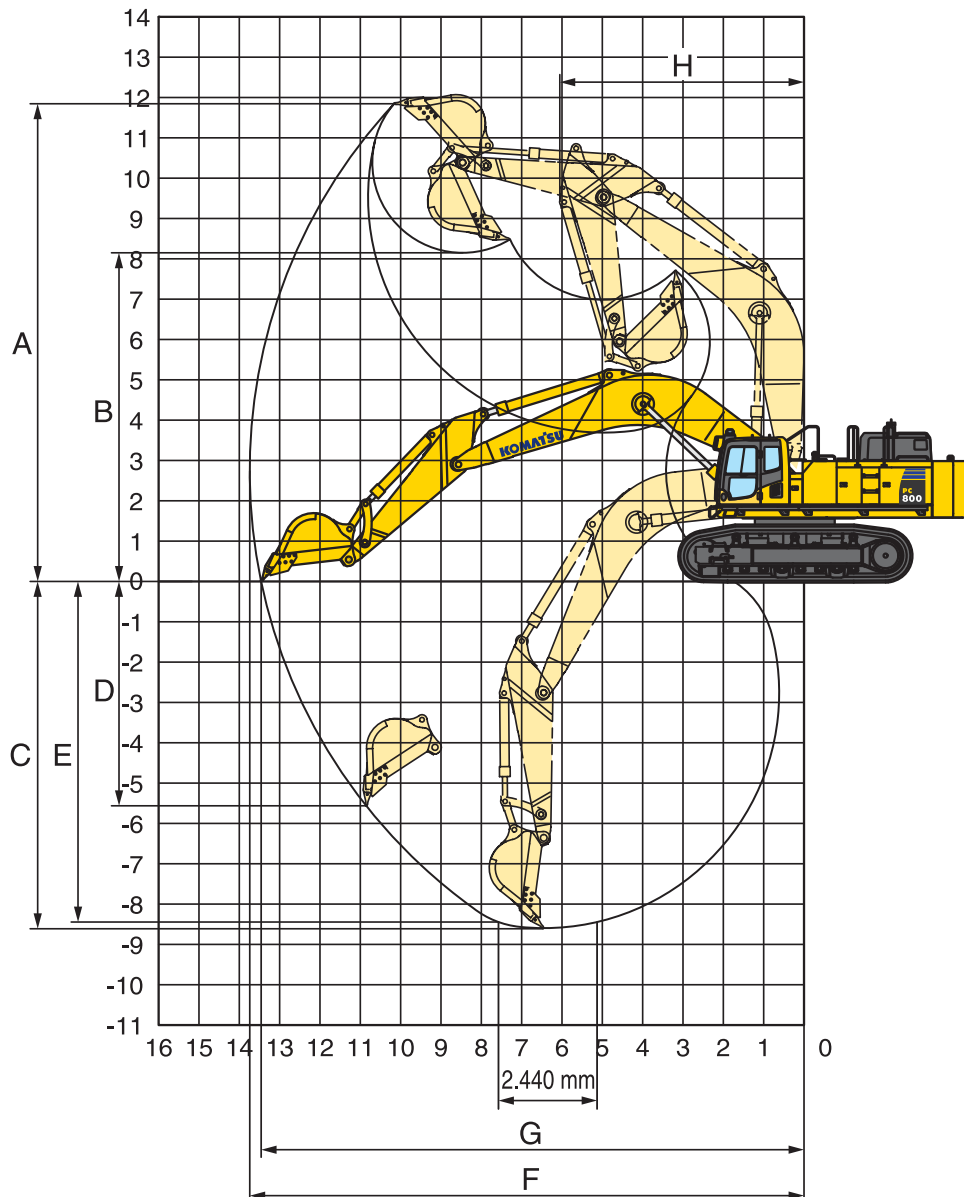
BOOM CYLINDER

A Length	3.235 mm
Weight	1.550 kg (2 × 755 kg)

ARM CYLINDER

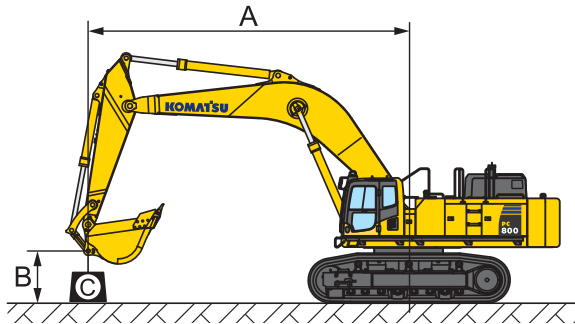
A Length	2.595 mm
Weight	990 kg (2 × 495 kg)

Working Range



MODEL	PC800LC-8	PC800-8
Boom length	8,0 m	7,1 m
Arm length	3,6 m	2,9 m
A Max. digging height	11.955 mm	11.330 mm
B Max. dumping height	8.235 mm	7.525 mm
C Max. digging depth	8.445 mm	7.130 mm
D Max. vertical wall digging depth	5.230 mm	4.080 mm
E Max. digging depth of cut for 2,44 m level	8.310 mm	6.980 mm
F Max. digging reach	13.660 mm	12.265 mm
G Max. digging reach at ground level	13.400 mm	11.945 mm
H Min. swing radius	5.985 mm	5.645 mm
Bucket digging force (ISO)	40.500 kg	48.000 kg
Arm crowd force (ISO)	33.300 kg	38.100 kg

PC800-8



A – Reach from swing centre

B – Bucket hook height

C – Lifting capacities

– Rating over front

– Rating over side

– Rating at maximum reach

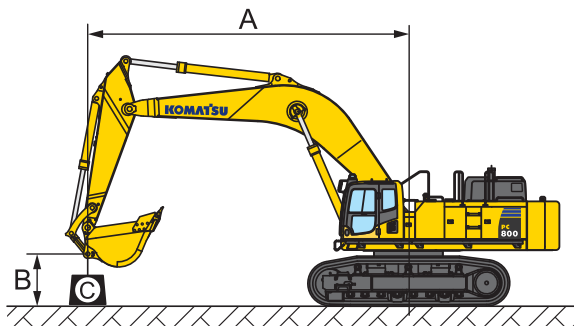
With 610 mm shoes

Arm length	A		9,0 m		7,5 m		6,0 m		4,5 m		3,0 m		
	B												
Heavy Lift: OFF 3,6 m 3,1 m³ Boom: 8,0 m	9,0 m	kg *7.390	*7.390										
	7,5 m	kg *7.480	*7.480	*11.120	*11.120								
	6,0 m	kg *7.780	*7.780	*12.160	*12.160	*14.140	*14.140						
	4,5 m	kg *8.300	*8.300	*13.470	*13.470	*16.450	*16.450	*22.230	*22.230				
	3,0 m	kg *9.070	8.060	*14.790	13.400	*18.640	17.990	*24.140	*24.140				
	1,5 m	kg *10.200	7.880	*15.840	12.740	*20.140	17.070	*25.830	24.020				
	0,0 m	kg 10.390	7.990	15.760	12.230	*20.740	16.340	*25.150	23.180	*13.570	*13.570		
	-1,5 m	kg 11.000	8.460	15.430	11.920	*20.720	15.950	*26.920	22.920	*12.680	*12.680	*12.660	*12.660
	-3,0 m	kg 12.230	9.420	15.330	11.830	*20.080	15.880	*25.650	23.110	*21.930	*21.930	*14.290	*14.290
	-4,5 m	kg *13.500	11.260	*14.480	12.030	*18.470	16.140	*23.360	*23.190	*29.600	*29.600	*23.400	*23.400
-6,0 m	kg *13.810	*13.810			*15.270	*15.270	*19.600	*19.600	*24.550	*24.550			
Heavy Lift: ON 3,6 m 3,1 m³ Boom: 8,0 m	9,0 m	kg *8.380	*8.380										
	7,5 m	kg *8.470	*8.470	*12.740	*12.740								
	6,0 m	kg *8.800	*8.800	*13.940	*13.940	*16.100	*16.100						
	4,5 m	kg *9.370	8.530	*15.450	14.120	*18.760	*18.760	*25.200	*25.200				
	3,0 m	kg *10.220	8.060	16.870	13.400	*21.270	18.130	*27.400	25.700				
	1,5 m	kg 10.210	7.880	16.300	12.740	21.920	17.070	*28.670	24.020				
	0,0 m	kg 10.390	7.990	15.760	12.230	21.140	16.340	*27.920	23.180	*15.140	*15.140		
	-1,5 m	kg 11.000	8.460	15.430	11.920	20.720	15.950	*30.190	22.920	*14.280	*14.280	*14.140	*14.140
	-3,0 m	kg 12.230	9.420	15.330	11.830	20.650	15.880	*29.270	23.110	*24.400	*24.400	*16.040	*16.040
	-4,5 m	kg 14.560	11.260	15.550	12.030	*20.760	16.140	*26.750	23.530	*33.830	*33.830	*26.000	*26.000
-6,0 m	kg *16.050	15.130			*17.680	*16.460	*22.580	*22.580	*28.240	*28.240			
Heavy Lift: OFF 2,9 m 4,0 m³ Boom: 7,1 m	9,0 m	kg *12.620	*12.620										
	7,5 m	kg *12.320	*12.320	*12.330	*12.330								
	6,0 m	kg *12.310	11.260	*12.630	*12.630	*14.150	*14.150						
	4,5 m	kg *12.490	10.040	*13.520	13.080	*16.040	*16.040	*20.780	*20.780	*29.030	*29.030		
	3,0 m	kg 12.260	9.410	*14.570	12.400	*18.010	17.350	*23.540	*23.540				
	1,5 m	kg 12.120	9.240	15.380	11.810	*19.460	16.410	*26.430	23.780				
	0,0 m	kg 12.560	9.550	15.060	11.510	*20.040	15.770	*26.730	22.930	*28.630	*28.630		
	-1,5 m	kg 13.770	10.490	14.900	11.360	*19.820	15.470	*26.110	22.650	*30.390	*30.390	*23.870	*23.870
	-3,0 m	kg *14.560	12.470			*18.280	15.540	*24.040	*22.790	*31.560	*31.560	*29.820	*29.820
	-4,5 m	kg *14.570	*14.570			*13.250	*13.250	*19.920	*19.920	*25.990	*25.990		
-6,0 m	kg												
Heavy Lift: ON 2,9 m 4,0 m³ Boom: 7,1 m	9,0 m	kg *14.430	*14.430										
	7,5 m	kg *14.130	13.350	*14.230	14.010								
	6,0 m	kg *14.260	11.260	*14.590	13.690	*16.230	*16.230						
	4,5 m	kg 12.980	10.040	*15.620	13.080	*18.400	18.340	*23.660	*23.660	*32.850	*32.850		
	3,0 m	kg 12.260	9.410	16.000	12.400	*20.660	17.350	*26.800	25.380				
	1,5 m	kg 12.120	9.240	15.380	11.810	21.290	16.410	*30.140	23.780				
	0,0 m	kg 12.560	9.550	15.060	11.510	20.610	15.770	30.360	22.930	*31.360	*31.360		
	-1,5 m	kg 13.770	10.490	14.900	11.360	20.290	15.470	*29.830	22.650	*33.780	*33.780	*26.480	*26.480
	-3,0 m	kg 16.300	12.470			20.370	15.540	*27.560	22.860	*36.040	*36.040	*33.160	*33.160
	-4,5 m	kg *17.000	16.820			*15.530	*15.530	*23.000	*23.000	*29.880	*29.880		
-6,0 m	kg												

* Load is limited by hydraulic capacity rather than tipping.
 Ratings are based on SAE Standard No. J1097.
 Rated loads do not exceed 87% of hydraulic lift capacity or 75% of tipping load.

Lifting Capacity

PC800LC-8



A – Reach from swing centre

B – Bucket hook height

C – Lifting capacities

– Rating over front

– Rating over side

– Rating at maximum reach

With 810 mm shoes

Arm length	A		9,0 m		7,5 m		6,0 m		4,5 m		3,0 m			
	B													
Heavy Lift: OFF 3,6 m 3,1 m³ Boom: 8,0 m	9,0 m	kg	*7.390	*7.390										
	7,5 m	kg	*7.480	*7.480	*11.120	*11.120								
	6,0 m	kg	*7.780	*7.780	*12.160	*12.160	*14.140	*14.140						
	4,5 m	kg	*8.300	*8.300	*13.470	*13.470	*16.450	*16.450	*22.230	*22.230				
	3,0 m	kg	*9.070	8.480	*14.790	13.990	*18.640	18.460	*24.140	*24.140				
	1,5 m	kg	*10.200	8.300	*15.840	13.330	*20.140	17.820	*25.830	25.030				
	0,0 m	kg	*11.870	8.420	*16.420	12.820	*20.740	17.090	*25.150	24.200	*13.570	*13.570		
	-1,5 m	kg	*12.430	8.910	*16.490	12.500	*20.720	16.690	*26.920	23.940	*12.680	*12.680	*12.660	*12.660
	-3,0 m	kg	*12.970	9.910	*16.000	12.410	*20.080	16.630	*25.650	*24.130	*21.930	*21.930	*14.290	*14.290
	-4,5 m	kg	*13.500	11.820	*14.480	12.620	*18.470	16.880	*23.360	*23.360	*29.600	*29.600	*23.400	*23.400
-6,0 m	kg	*13.810	*13.810			*15.270	*15.270	*19.600	*19.600	*24.550	*24.550			
Heavy Lift: ON 3,6 m 3,1 m³ Boom: 8,0 m	9,0 m	kg	*8.380	*8.380										
	7,5 m	kg	*8.470	*8.470	*12.740	*12.740								
	6,0 m	kg	*8.800	*8.800	*13.940	*13.940	*16.100	*16.100						
	4,5 m	kg	*9.370	8.950	*15.450	14.700	*18.760	*18.760	*25.200	*25.200				
	3,0 m	kg	*10.220	8.480	*16.960	13.990	*21.270	18.870	*27.400	26.710				
	1,5 m	kg	*11.460	8.300	*18.170	13.330	*22.990	17.820	*28.670	25.030				
	0,0 m	kg	12.950	8.420	*18.850	12.820	*23.700	17.090	*27.920	24.200	*15.140	*15.140		
	-1,5 m	kg	13.720	8.910	*18.940	12.500	*23.690	16.690	*30.670	23.940	*14.280	*14.280	*14.140	*14.140
	-3,0 m	kg	*15.030	9.910	*18.420	12.410	*23.010	16.630	*29.270	24.130	*24.400	*24.400	*16.040	*16.040
	-4,5 m	kg	*15.640	11.820	*16.750	12.620	*21.230	16.880	*26.750	*24.520	*33.830	*33.830	*26.000	*26.000
-6,0 m	kg	*16.050	15.830			*17.680	*17.210	*22.580	*22.580	*28.240	*28.240			
Heavy Lift: OFF 2,9 m 4,0 m³ Boom: 7,1 m	9,0 m	kg	*12.620	*12.620										
	7,5 m	kg	*12.320	*12.320	*12.330	*12.330								
	6,0 m	kg	*12.310	11.780	*12.630	*12.630	*14.150	*14.150						
	4,5 m	kg	*12.490	10.540	*13.520	*13.520	*16.040	*16.040	*20.780	*20.780	*29.030	*29.030		
	3,0 m	kg	*12.780	9.900	*14.570	12.990	*18.010	17.860	*23.540	*23.540				
	1,5 m	kg	*13.180	9.730	*15.410	12.400	*19.460	17.150	*26.430	24.800				
	0,0 m	kg	*13.650	10.070	*15.810	12.100	*20.040	16.510	*26.730	23.950	*28.630	*28.630		
	-1,5 m	kg	*14.140	11.040	*15.330	11.950	*19.820	16.220	*26.110	23.660	*30.390	*30.390	*23.870	*23.870
	-3,0 m	kg	*14.560	13.090			*18.280	16.280	*24.040	*23.810	*31.560	*31.560	*29.820	*29.820
	-4,5 m	kg	*14.570	*14.570			*13.250	*13.250	*19.920	*19.920	*25.990	*25.990		
-6,0 m	kg													
Heavy Lift: ON 2,9 m 4,0 m³ Boom: 7,1 m	9,0 m	kg	*14.430	*14.430										
	7,5 m	kg	*14.130	13.920	*14.230	*14.230								
	6,0 m	kg	*14.260	11.780	*14.590	14.280	*16.230	*16.230						
	4,5 m	kg	*14.480	10.540	*15.620	13.670	*18.400	*18.400	*23.660	*23.660	*32.850	*32.850		
	3,0 m	kg	*14.840	9.900	*16.820	12.990	*20.660	18.090	*26.800	26.400				
	1,5 m	kg	15.190	9.730	*17.790	12.400	*22.320	17.150	*30.140	24.800				
	0,0 m	kg	15.770	10.070	*18.260	12.100	*22.990	16.510	*30.480	23.950	*31.360	*31.360		
	-1,5 m	kg	*16.420	11.040	*17.750	11.950	*22.780	16.220	*29.830	23.660	*33.780	*33.780	*26.480	*26.480
	-3,0 m	kg	*16.920	13.090			*21.090	16.280	*27.560	23.880	*36.040	*36.040	*33.160	*33.160
	-4,5 m	kg	*17.000	*17.000			*15.530	*15.530	*23.000	*23.000	*29.880	*29.880		
-6,0 m	kg													

* Load is limited by hydraulic capacity rather than tipping.
 Ratings are based on SAE Standard No. J1097.
 Rated loads do not exceed 87% of hydraulic lift capacity or 75% of tipping load.