

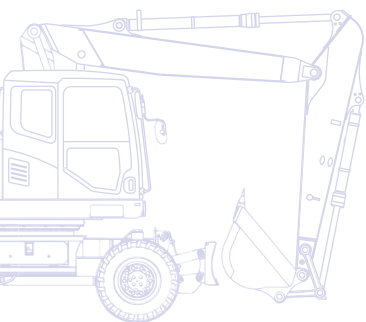
KOMATSU

PW
200



Hydraulic Wheeled Excavator

PW200-7



ENGINE POWER
134 kW / 180 HP @ 2.000 rpm

OPERATING WEIGHT
19.090 - 22.220 kg

BUCKET CAPACITY
max. 1,58 m³

Walk-Around

The experts at Komatsu designed the PW200-7 with a lifting performance that meets the requirements for safe and productive work on any job site. Powerful and versatile, this hydraulic wheeled excavator is the perfect machine in all applications. Performance and quality. It's what you can expect from all Komatsu equipment, and the PW200-7 delivers.



Total versatility

- Ideal for a wide range of applications
- Additional hydraulic circuit
- A wide choice of options

Powerful and environmentally friendly

- Excellent travel performance
- Low consumption ecot3 engine
- Meets EU Stage IIIA
- Komatsu integrated hydraulic system
- High lift capacity

PW200-7

ENGINE POWER
134 kW / 180 HP @ 2.000 rpm

OPERATING WEIGHT
19.090 - 22.220 kg

BUCKET CAPACITY
max. 1,58 m³

First-class operator comfort

- Wide spacious cab
- Air-suspended, heated seat
- Automatic climate control
- Convenient storage space
- Large, widescreen TFT monitor panel



State of the art controls

- Proportional controls for attachments
- Easy operation
- Selectable working modes
- Flexible and versatile

Easy maintenance

- Simple and convenient service
- Easy radiator access
- Centralised greasing system
- Large TFT monitor
- Electric refuelling pump



KOMTRAX

Komatsu Wireless Monitoring
System

Specifications

ENGINE

Model	Komatsu SAA6D107E-1
Type.....	Common rail direct injection, water-cooled, emissionised, turbocharged, after-cooled diesel
Engine power	
at rated engine speed	2.000 rpm
ISO 14396	134 kW/180 HP
ISO 9249 (net engine power)	125 kW/168 HP
No. of cylinders	6
Bore × stroke.....	107 × 124 mm
Displacement.....	6,69 ltr
Batteries	2 × 12 V/120 Ah
Alternator	24 V/60 A
Starter motor	24 V/5,5 kW
Air filter type	Double element type with monitor panel dust indicator and auto dust evacuator
Cooling	Suction type cooling fan

HYDRAULIC SYSTEM

Type.....	HydraMind. Closed-centre system with load sensing and pressure compensation valves
Additional circuits	Depending on the specification up to 2 additional proportional control & quick coupler circuits can be installed
Main pump	Variable displacement piston pump supplying boom, arm, bucket, swing and travel circuits
Maximum pump flow.....	2× 218,4 ltr/min
Relief valve settings	
Implement	380 bar
Travel.....	380 bar
Swing.....	355 bar
Pilot circuit	37 bar

BRAKE SYSTEM

Type	Dual circuit hydraulic braking system supplied from a separate gear pump.
Service brakes.....	Pedal actuated wet multi-disc brakes integrated into the axle hubs.
Parking brake	Electrically actuated wet multi-disc “spring actuation hydraulic release” brake integrated into the transmission.

ENVIRONMENT

Engine emissions	Fully complies with EU Stage IIIA and EPA Tier III exhaust emission regulations
Noise levels	
LwA external	103 dB(A) (2000/14/EC Stage II)
LpA operator ear.....	72 dB(A) (ISO 6396 dynamic test)
Vibration levels (EN 12096:1997)*	
Hand/arm	≤ 2,5 m/s ² (uncertainty K = 0,275 m/s ²)
Body	≤ 0,5 m/s ² (uncertainty K = 0,175 m/s ²)

* for the purpose of risk assessment under directive 2002/44/EC, please refer to ISO/TR 25398:2006.

SWING SYSTEM

Type.....	Axial piston motor driving through planetary double reduction gearbox
Swing lock	Electrically actuated wet multi-disc brake integrated into swing motor
Swing speed.....	0 - 12,4 rpm
Swing torque	68 kNm

TRANSMISSION

Type	Fully automatic power shift transmission with permanent 4 wheel drive
Travel motors.....	One variable displacement axial piston motor
Maximum pressure.....	380 bar
Travel modes	Automatic + 3 travel modes
Max. travel speeds	
Hi / Lo / Creep	35,0 / 6,0 / 1,5 km/h
A max. speed restriction of 20 km/h is available as an option.	
Maximum drawbar pull.....	12.600 kg
Axle oscillation.....	11° Lockable in any position from the operator cab.

STEERING SYSTEM

Steering control	Hydraulic steering system supplied from a separate gear pump and controlled through LS orbitrol & priority valves.
Minimum turning radius	
2,55 m wide undercarriage	6.850 mm (to center of outer wheel)
2,75 m wide undercarriage	7.050 mm (to center of outer wheel)

SERVICE REFILL CAPACITIES

Fuel tank.....	370 ltr
Radiator	17,6 ltr
Engine oil.....	25,4 ltr
Swing drive.....	6,6 ltr
Hydraulic tank	166 ltr
Transmission.....	2,9 ltr
Front differential (2,55 m wide undercarriage).....	11,5 ltr
Front differential (2,75 m wide undercarriage).....	13,5 ltr
Rear differential (2,55 m wide undercarriage).....	10 ltr
Rear differential (2,75 m wide undercarriage).....	12 ltr
Front axle hub	2,5 ltr
Rear axle hub	2,0 ltr
Swing pinion grease bath amount.....	33 ltr

OPERATING WEIGHT (APPR.)

Undercarriage attachment type	Mono boom		Two-piece boom	
	2,55 m undercarriage	2,75 m undercarriage	2,55 m undercarriage	2,75 m undercarriage
Without	19.090 kg	19.380 kg	19.770 kg	20.060 kg
Rear blade	19.970 kg	20.290 kg	20.650 kg	20.970 kg
Rear outrigger	20.100 kg	20.460 kg	20.780 kg	21.140 kg
2 outriggers + blade	20.980 kg	21.390 kg	21.660 kg	22.050 kg
4 outriggers	21.110 kg	21.540 kg	21.790 kg	22.220 kg

Operating weight, including specified work equipment, 2,4 m arm, operator, lubricant, coolant, full fuel tank and the standard equipment. Weights are without bucket.

MAX. BUCKET CAPACITY AND WEIGHT (2,55 M UNDERCARRIAGE)

Arm length	Mono boom		
	2,4 m	2,9 m	3,5 m
Material weight up to 1,2 t/m ³	1,11 m ³ 870 kg	1,03 m ³ 810 kg	0,96 m ³ 760 kg
Material weight up to 1,5 t/m ³	1,03 m ³ 810 kg	0,96 m ³ 760 kg	0,78 m ³ 650 kg
Material weight up to 1,8 t/m ³	0,96 m ³ 760 kg	0,78 m ³ 650 kg	0,71 m ³ 610 kg

Arm length	Two-piece boom		
	2,4 m	2,9 m	3,5 m
Material weight up to 1,2 t/m ³	1,11 m ³ 870 kg	1,03 m ³ 810 kg	0,96 m ³ 760 kg
Material weight up to 1,5 t/m ³	1,03 m ³ 810 kg	0,96 m ³ 760 kg	0,78 m ³ 650 kg
Material weight up to 1,8 t/m ³	0,96 m ³ 760 kg	0,78 m ³ 650 kg	0,71 m ³ 610 kg

MAX. BUCKET CAPACITY AND WEIGHT (2,75 M UNDERCARRIAGE)

Arm length	Mono boom		
	2,4 m	2,9 m	3,5 m
Material weight up to 1,2 t/m ³	– –	1,19 m ³ 930 kg	1,11 m ³ 870 kg
Material weight up to 1,5 t/m ³	1,19 m ³ 930 kg	1,11 m ³ 870 kg	0,96 m ³ 760 kg
Material weight up to 1,8 t/m ³	1,03 m ³ 810 kg	0,96 m ³ 760 kg	0,86 m ³ 700 kg

Arm length	Two-piece boom		
	2,4 m	2,9 m	3,5 m
Material weight up to 1,2 t/m ³	– –	1,19 m ³ 930 kg	1,11 m ³ 870 kg
Material weight up to 1,5 t/m ³	1,19 m ³ 930 kg	1,11 m ³ 870 kg	0,96 m ³ 760 kg
Material weight up to 1,8 t/m ³	1,03 m ³ 810 kg	0,96 m ³ 760 kg	0,86 m ³ 700 kg

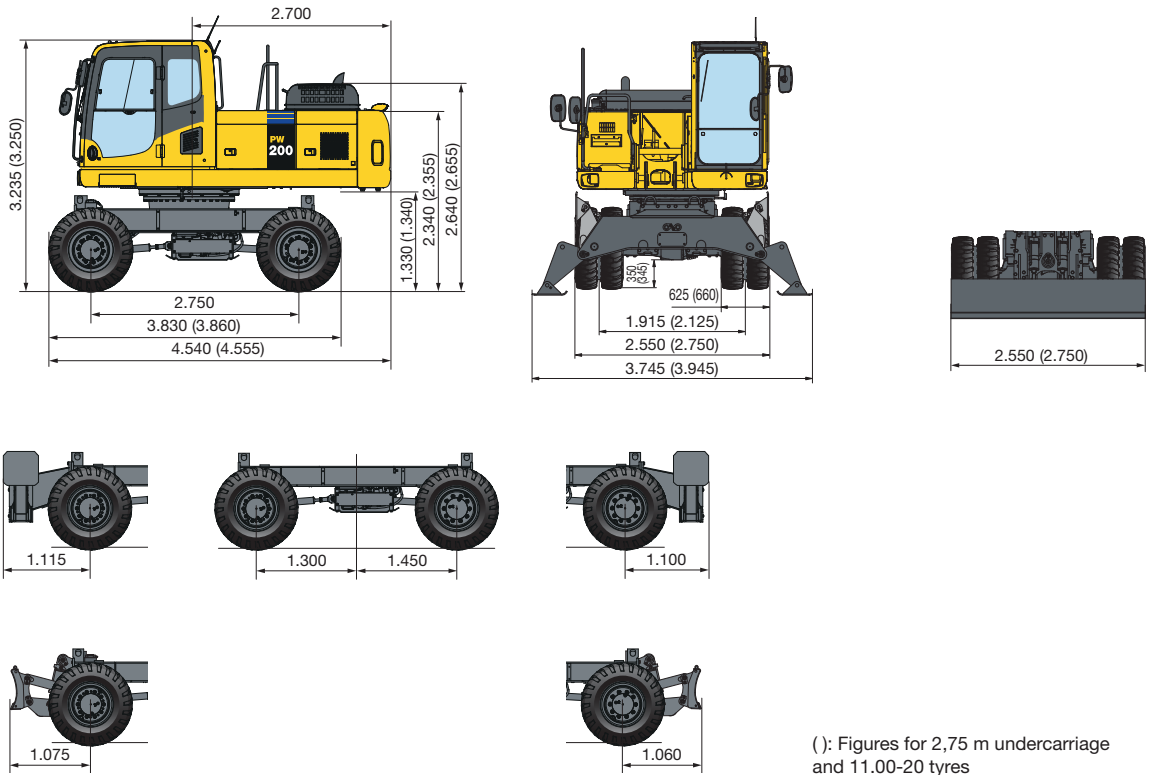
Max. capacity and weight have been calculated according to ISO 10567:2007.

Please consult with your distributor for the correct selection of buckets and attachments to suit the application.

BUCKET AND ARM FORCE

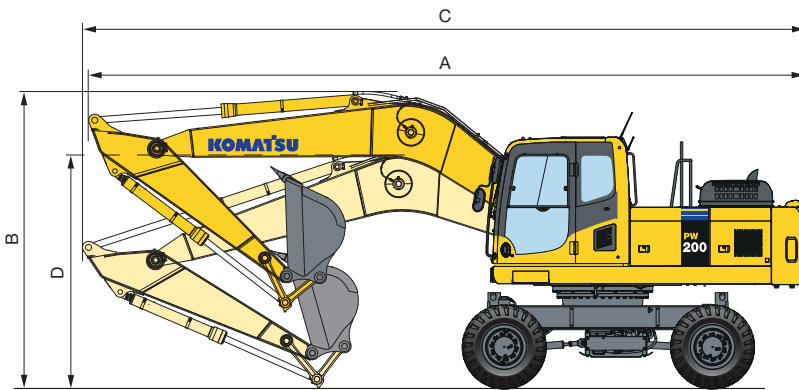
Arm length	2,4 m	2,9 m	3,5 m
Bucket digging force	163 kN	139 kN	139 kN
Bucket digging force at PowerMax	176 kN	149 kN	149 kN
Arm crowd force	119,6 kN	101 kN	83,4 kN
Arm crowd force at PowerMax	127,5 kN	107,9 kN	89,3 kN

Dimensions



(): Figures for 2,75 m undercarriage and 11.00-20 tyres

MONO BOOM



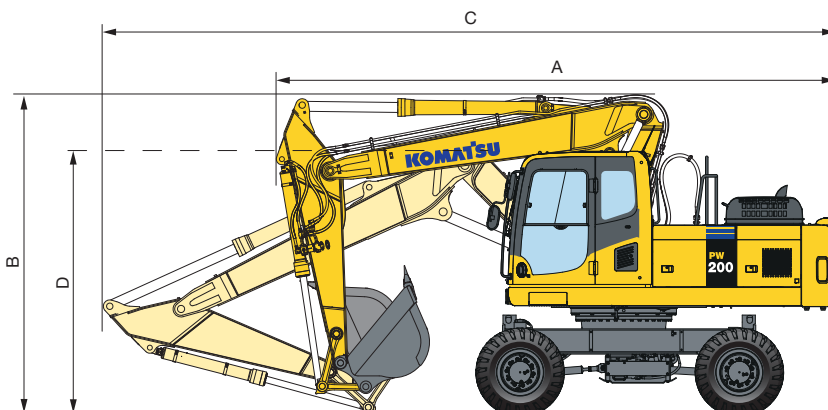
Driving position

Arm length	A	B
2.400 mm	9.435 mm	3.895 mm
2.900 mm	9.430 mm	3.910 mm
3.500 mm	9.470 mm	3.985 mm

Transport position

Arm length	C	D
2.400 mm	9.660 mm	3.195 mm
2.900 mm	9.595 mm	3.020 mm
3.500 mm	9.640 mm	3.570 mm

TWO-PIECE BOOM



Driving position

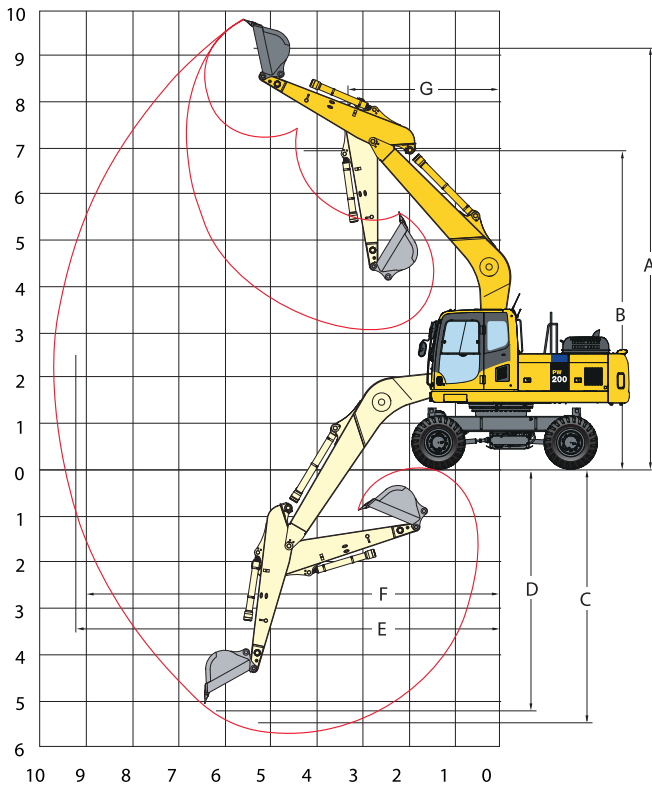
Arm length	A	B
2.400 mm	7.080 mm	3.980 mm
2.900 mm	7.000 mm	4.000 mm
3.500 mm	7.220 mm	4.505 mm

Transport position

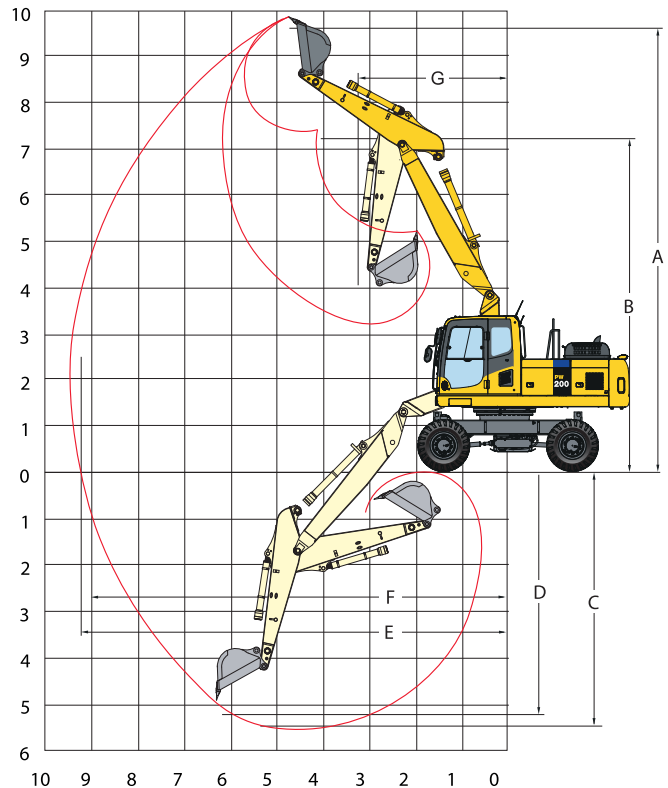
Arm length	C	D
2.400 mm	9.470 mm	3.150 mm
2.900 mm	9.290 mm	3.095 mm
3.500 mm	9.225 mm	3.715 mm



MONO BOOM



TWO-PIECE BOOM



MONO BOOM



ARM LENGTH	2,4 m	2,9 m	3,5 m
A Max. digging height	9.890 mm	10.010 mm	10.440 mm
B Max. dumping height	7.060 mm	7.230 mm	7.610 mm
C Max. digging depth	5.400 mm	5.920mm	6.500 mm
D Max. digging depth of cut for 2,44 m level	5.225 mm	5.760 mm	6.370 mm
E Max. digging reach	9.650 mm	10.060 mm	10.640 mm
F Max. digging reach at ground level	9.440 mm	9.875 mm	10.480 mm
G Min. swing radius	3.200 mm	3.145 mm	3.145 mm

TWO-PIECE BOOM


ARM LENGTH	2,4 m	2,9 m	3,5 m
A Max. digging height	9.840 mm	10.170 mm	10.435 mm
B Max. dumping height	6.980 mm	7.300 mm	7.575 mm
C Max. digging depth	5.785 mm	6.285 mm	6.860 mm
D Max. digging depth of cut for 2,44 m level	5.715 mm	6.225 mm	6.795 mm
E Max. digging reach	9.350 mm	9.820 mm	10.340 mm
F Max. digging reach at ground level	9.145 mm	9.635 mm	10.155 mm
G Min. swing radius	3.120 mm	2.745 mm	2.865 mm


Lifting Capacity

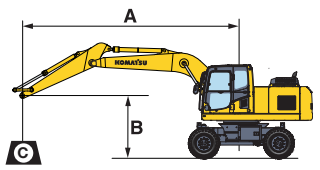
Mono boom / undercarriage width 2,55 m

Arm length	A B	⊗		9,0 m		7,5 m		6,0 m		4,5 m		3,0 m		1,5 m	
		⊗	⊗	⊗	⊗	⊗	⊗	⊗	⊗	⊗	⊗	⊗	⊗	⊗	
 Without stabilizer	2,4 m	7,5 m kg	*4.250	2.700					4.650	2.950					
		6,0 m kg	3.150	1.900					4.700	3.000					
		4,5 m kg	2.600	1.500			3.000	1.800	4.550	2.850	7.550	4.700			
		3,0 m kg	2.300	1.300			2.900	1.700	4.300	2.600	6.800	4.050			
		1,5 m kg	2.200	1.200			2.800	1.600	4.050	2.350	6.300	3.650			
		0,0 m kg	2.250	1.250			2.700	1.500	3.750	2.100	6.000	3.350			
	2,9 m	- 1,5 m kg	2.500	1.400			2.650	1.450	3.650	2.050	5.950	3.300	*9.750	6.300	
		- 3,0 m kg	3.050	1.750					3.800	2.150	6.050	3.400	*8.200	6.550	
		7,5 m kg	*2.650	2.250					*4.450	3.050					
		6,0 m kg	*2.550	1.600			3.100	1.850	4.800	3.050					
		4,5 m kg	2.300	1.300			3.050	1.850	4.600	2.900					
		3,0 m kg	2.050	1.100			2.900	1.700	4.350	2.650	7.100	4.300	14.600	7.950	
	3,5 m	1,5 m kg	1.950	1.050			2.800	1.600	4.050	2.400	6.450	3.750			
		0,0 m kg	2.000	1.050			2.650	1.500	3.800	2.150	6.050	3.400	*5.950	*5.950	
		- 1,5 m kg	2.200	1.150			2.600	1.400	3.600	1.950	5.900	3.250	*9.200	6.200	
		- 3,0 m kg	2.600	1.450			2.650	1.450	3.650	2.050	5.950	3.300	*10.200	6.400	
		7,5 m kg	*2.650	1.850			*2.700	1.900							
		6,0 m kg	2.400	1.350			3.150	1.900							
 Front or rear blade	2,4 m	7,5 m kg	*4.250	3.150				*5.050	3.400						
		6,0 m kg	*4.000	2.250					*6.800	3.450					
		4,5 m kg	*4.050	1.800			5.200	2.150	*7.450	3.300	*9.450	5.400			
		3,0 m kg	4.100	1.600			5.050	2.050	7.550	3.050	*10.850	4.750			
		1,5 m kg	3.950	1.500			4.950	1.900	7.250	2.800	*11.650	4.300			
		0,0 m kg	4.050	1.550			4.800	1.850	6.900	2.550	*11.050	4.050			
	2,9 m	- 1,5 m kg	4.500	1.700			4.800	1.800	6.800	2.450	*9.500	3.950	*9.750	7.650	
		- 3,0 m kg	*3.950	2.100					*5.300	2.600	*7.100	4.050	*8.200	7.900	
		7,5 m kg	*2.650	2.600					*4.450	3.500					
		6,0 m kg	*2.550	1.900			*3.850	2.200	*5.300	3.500					
		4,5 m kg	*2.550	1.550			5.250	2.150	*6.600	3.350					
		3,0 m kg	*2.650	1.400			5.100	2.050	7.650	3.100	*10.350	4.950	*16.700	9.350	
	3,5 m	1,5 m kg	*2.900	1.300			4.950	1.900	7.300	2.850	*11.450	4.400			
		0,0 m kg	*3.300	1.350			4.800	1.800	6.950	2.550	*11.350	4.050	*5.950	*5.950	
		- 1,5 m kg	4.000	1.450			4.750	1.750	6.750	2.400	*10.150	3.900	*9.200	7.500	
		- 3,0 m kg	*3.900	1.750			*4.950	1.800	*5.950	2.450	*8.050	3.950	*10.200	7.700	
		7,5 m kg	*2.650	2.200			*2.700	2.200							
		6,0 m kg	*2.550	1.650			*4.150	2.250							
 Rear outrigger	2,4 m	7,5 m kg	*4.250	3.650				*5.050	3.900						
		6,0 m kg	*4.000	2.600					*6.800	3.950					
		4,5 m kg	*4.050	2.150			5.800	2.500	*7.450	3.800	*9.450	6.250			
		3,0 m kg	*4.200	1.900			5.650	2.400	*8.050	3.550	*10.850	5.550			
		1,5 m kg	4.450	1.800			5.500	2.300	8.200	3.300	*11.650	5.100			
		0,0 m kg	4.550	1.850			5.400	2.200	7.850	3.050	*11.050	4.800			
	2,9 m	- 1,5 m kg	*4.650	2.050			*5.150	2.150	*7.050	2.950	*9.500	4.750	*9.750	9.350	
		- 3,0 m kg	*3.950	2.500					*5.300	3.100	*7.100	4.850	*8.200	*8.200	
		7,5 m kg	*2.650	*2.650					*4.450	4.050					
		6,0 m kg	*2.550	2.250			*3.850	2.550	*5.300	4.000					
		4,5 m kg	*2.550	1.650			*5.300	2.550	*6.600	3.850					
		3,0 m kg	*2.650	1.450			5.700	2.400	*7.750	3.600	*10.350	5.800	*16.700	11.200	
	3,5 m	1,5 m kg	*2.900	1.400			5.550	2.300	8.250	3.350	*11.450	5.200			
		0,0 m kg	*3.250	1.400			5.400	2.150	7.900	3.050	*11.350	4.850	*5.950	*5.950	
		- 1,5 m kg	*3.900	1.500			5.300	2.100	*7.400	2.900	*10.150	4.700	*9.200	*9.200	
		- 3,0 m kg	*3.900	1.800			*3.950	2.150	*5.950	2.950	*8.050	4.750	*10.200	9.400	
		7,5 m kg	*2.650	2.550			*2.700	2.600							
		6,0 m kg	*2.550	2.100			*4.150	2.650							



Arm length	A	⊗		9,0 m		7,5 m		6,0 m		4,5 m		3,0 m		1,5 m		
		⌋	⌋	⌋	⌋	⌋	⌋	⌋	⌋	⌋	⌋	⌋	⌋	⌋		
 Outrigger + blade	2,4 m	7,5 m kg	*4.350	*4.350					*5.100	*5.100						
		6,0 m kg	*4.100	3.500					*6.900	5.150						
		4,5 m kg	*4.100	2.900			5.300	3.350	*7.550	5.000	*9.600	8.200				
		3,0 m kg	4.200	2.600			5.200	3.250	7.650	4.750	*11.000	7.450				
		1,5 m kg	4.100	2.500			5.050	3.100	7.350	4.450	*11.850	7.000				
		0,0 m kg	4.200	2.550			4.950	3.000	7.000	4.200	*11.250	6.700				
	2,9 m	- 1,5 m kg	4.650	2.800			4.900	3.000	6.900	4.100	*9.650	6.600	*9.900	*9.900		
		- 3,0 m kg	*4.000	3.450					*5.400	4.250	*7.200	6.700	*8.400	*8.400		
		7,5 m kg	*2.700	*2.700					*4.500	*4.500						
		6,0 m kg	*2.600	*2.600			*3.900	3.400		*5.400	5.250					
		4,5 m kg	*2.600	2.550			5.350	3.350	*6.700	5.050						
		3,0 m kg	*2.700	2.350			5.200	3.250	7.700	4.800	*10.550	7.750	*16.950	15.950		
	3,5 m	1,5 m kg	*2.950	2.250			5.050	3.100	7.400	4.500	*11.650	7.100				
		0,0 m kg	*3.350	2.300			4.950	3.000	7.050	4.200	*11.550	6.700	*6.050	*6.050		
		- 1,5 m kg	*4.050	2.500			4.850	2.950	6.850	4.050	*10.350	6.550	*9.300	*9.300		
		- 3,0 m kg	*5.350	3.150			*4.000	2.950	*6.050	4.100	*8.200	6.600	*10.400	*10.400		
		7,5 m kg	*2.700	*2.700			*2.750	*2.750								
		6,0 m kg	*2.600	*2.600			*4.200	3.500								

 Outrigger front + rear	2,4 m	7,5 m kg	*4.350	*4.350					*5.100	*5.100						
		6,0 m kg	*4.100	*4.100					*6.900	6.300						
		4,5 m kg	*4.100	3.600			5.900	4.100	*7.550	6.150	*9.600	*9.600				
		3,0 m kg	*4.300	3.250			5.800	4.000	*8.150	5.850	*11.000	9.450				
		1,5 m kg	4.550	3.150			5.650	3.900	8.250	5.600	*11.850	8.900				
		0,0 m kg	4.700	3.200			5.550	3.800	7.950	5.300	*11.250	8.550				
	2,9 m	- 1,5 m kg	*4.750	3.550			*5.250	3.750	*7.200	5.200	*9.650	8.500	*9.900	*9.900		
		- 3,0 m kg	*4.000	*4.000					*5.400	5.350	*7.200	*7.200	*8.400	*8.400		
		7,5 m kg	*2.700	*2.700					*4.500	*4.500						
		6,0 m kg	*2.600	*2.600			*3.900	*3.900	*5.400	*5.400						
		4,5 m kg	*2.600	*2.600			*5.400	4.150	*6.700	6.200						
		3,0 m kg	*2.700	*2.700			5.800	4.050	*7.850	5.950	*10.550	9.750	*16.950	*16.950		
	3,5 m	1,5 m kg	*2.950	2.800			5.650	3.900	8.300	5.600	*11.650	9.050				
		0,0 m kg	*3.350	2.900			5.550	3.750	8.000	5.300	*11.550	8.600	*6.050	*6.050		
		- 1,5 m kg	*4.050	3.150			5.450	3.700	*7.550	5.150	*10.350	8.450	*9.300	*9.300		
		- 3,0 m kg	*4.000	3.700			*4.000	3.750	*6.050	5.200	*8.200	*8.200	*10.400	*10.400		
		7,5 m kg	*2.700	*2.700			*2.750	*2.750								
		6,0 m kg	*2.600	*2.600			*4.200	*4.200								



- A – Reach from swing center
- B – Bucket hook height
- C – Lifting capacities, including bucket linkage (130 kg) and bucket cylinder (182 kg)




When removing linkage or cylinder, lifting capacities can be increased by their respective weights.

* Load is limited by hydraulic capacity rather than tipping. Ratings are based on SAE Standard No. J1097. Rated loads do not exceed 87% of hydraulic lift capacity or 75% of tipping load.


-  – Rating over front
-  – Rating over side
-  – Rating at maximum reach


Lifting Capacity

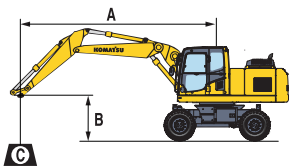
Two-piece boom / undercarriage width 2,55 m

Arm length	A B	⊗		9,0 m		7,5 m		6,0 m		4,5 m		3,0 m		1,5 m		
		⊗	⊗	⊗	⊗	⊗	⊗	⊗	⊗	⊗	⊗	⊗	⊗	⊗		
 Without stabilizer	2,4 m	7,5 m kg	*4.400	3.050					4.850	3.050						
		6,0 m kg	3.450	2.050												
		4,5 m kg	2.800	1.600			3.050	1.800	4.700	2.900	*6.850	4.900				
		3,0 m kg	2.450	1.400			2.950	1.700	4.400	2.650	7.200	4.300				
		1,5 m kg	2.350	1.300			2.800	1.600	4.100	2.400	6.500	3.750				
		0,0 m kg	2.400	1.300			2.700	1.500	3.900	2.200	6.100	3.400				
	2,9 m	- 1,5 m kg	2.650	1.450			2.700	1.450	3.750	2.100	6.000	3.300	*10.950	6.200		
		- 3,0 m kg	3.300	1.850					3.850	2.150	6.050	3.350	12.800	6.450		
		7,5 m kg	*2.800	2.500					*4.150	3.100						
		6,0 m kg	*2.600	1.750			3.100	1.850	*4.800	3.100						
		4,5 m kg	2.450	1.400			3.100	1.850	4.750	3.000	*6.050	5.050				
		3,0 m kg	2.200	1.200			3.000	1.750	4.500	2.750	7.400	4.450	*12.400	8.500		
	3,5 m	1,5 m kg	2.100	1.100			2.850	1.600	4.150	2.450	6.650	3.850	*6.350	*6.350		
		0,0 m kg	2.100	1.100			2.700	1.450	3.900	2.200	6.150	3.400	*6.950	6.200		
		- 1,5 m kg	2.300	1.200			2.600	1.400	3.750	2.050	5.950	3.250	*10.200	6.100		
- 3,0 m kg		2.800	1.500					3.750	2.050	5.950	3.250	12.550	6.250			
7,5 m kg		*2.700	2.050													
6,0 m kg		*2.550	1.500			3.200	1.950	*4.100	3.200							
2,4 m	4,5 m kg	2.150	1.200			3.150	1.900	*4.700	3.050							
	3,0 m kg	1.950	1.000	2.050	1.100	3.000	1.750	4.600	2.800	*7.000	4.650	*10.000	9.200			
	1,5 m kg	1.850	900	1.950	1.000	2.850	1.600	4.250	2.500	6.750	3.900					
	0,0 m kg	1.850	900	1.900	950	2.700	1.450	3.900	2.200	6.550	3.500	*7.600	6.300			
	- 1,5 m kg	2.000	1.000			2.550	1.350	3.700	2.000	5.950	3.200	*9.700	6.050	*5.400	*5.400	
	- 3,0 m kg	2.350	1.250			2.550	1.350	3.650	1.950	5.850	3.150	12.350	6.100			
 Front or rear blade	2,4 m	7,5 m kg	*4.400	3.500					*5.350	3.500						
		6,0 m kg	*4.100	2.450												
		4,5 m kg	*4.050	1.950			5.300	2.150	*5.850	3.350	*6.850	5.600				
		3,0 m kg	*4.200	1.650			5.200	2.050	*6.700	3.100	*8.750	5.000				
		1,5 m kg	4.250	1.550			5.050	1.950	7.450	2.850	*10.500	4.400				
		0,0 m kg	4.350	1.600			4.900	1.850	7.150	2.650	*11.300	4.050				
	2,9 m	- 1,5 m kg	4.850	1.800			4.900	1.800	7.000	2.550	*11.100	3.950	*10.950	7.550		
		- 3,0 m kg	*6.000	2.250					*7.100	2.600	*9.900	4.000	*14.050	7.800		
		7,5 m kg	*2.800	*2.800					*4.150	3.550						
		6,0 m kg	*2.600	2.100			*3.200	2.200	*4.800	3.600						
		4,5 m kg	*2.550	1.700			*4.950	2.200	*5.350	3.450	*6.050	5.750				
		3,0 m kg	*2.650	1.450			5.250	2.050	*6.250	3.200	*7.950	5.200	*12.400	9.950		
	3,5 m	1,5 m kg	*2.900	1.350			5.050	1.950	*7.200	2.900	*9.900	4.550	*6.350	*6.350		
		0,0 m kg	*3.250	1.400			4.900	1.800	7.200	2.650	*11.050	4.100	*6.950	*6.950		
		- 1,5 m kg	*3.950	1.500			4.800	1.750	7.000	2.500	*11.200	3.900	*10.200	7.450		
- 3,0 m kg		5.150	1.850					7.000	2.500	*10.400	3.950	*15.250	7.650			
7,5 m kg		*2.750	2.400													
6,0 m kg		*2.550	1.800			*3.950	2.300	*4.100	3.700							
2,4 m	4,5 m kg	*2.550	1.450			*4.500	2.250	*4.700	3.550							
	3,0 m kg	*2.650	1.250	*3.350	1.350	*4.950	2.100	*5.650	3.250	*7.000	5.400	*10.000	*10.000			
	1,5 m kg	*2.850	1.200	3.650	1.300	5.100	1.950	*6.750	2.950	*9.050	4.600					
	0,0 m kg	*3.200	1.200	3.550	1.200	4.900	1.800	7.250	2.650	*10.600	4.150	*7.600	*7.600			
	- 1,5 m kg	3.750	1.300			4.750	1.700	7.000	2.450	*11.150	3.900	*9.750	7.400	*5.400	*5.400	
	- 3,0 m kg	4.400	1.550			4.750	1.650	6.900	2.400	*10.750	3.800	*13.700	7.450			
 Rear outrigger	2,4 m	7,5 m kg	*4.400	4.050					*5.350	4.050						
		6,0 m kg	*4.100	2.850												
		4,5 m kg	*4.050	2.300			*5.350	2.500	*5.850	3.900	*6.850	6.450				
		3,0 m kg	*4.200	2.000			*5.700	2.450	*6.700	3.650	*8.750	5.850				
		1,5 m kg	*4.550	1.900			5.650	2.300	*7.550	3.350	*10.500	5.250				
		0,0 m kg	*4.900	1.950			5.550	2.200	*8.050	3.150	*11.300	4.850				
	2,9 m	- 1,5 m kg	5.450	2.150			5.500	2.150	8.000	3.050	*11.100	4.750	*10.950	9.300		
		- 3,0 m kg	*6.000	2.700					*7.100	3.100	*9.900	4.850	*14.050	9.550		
		7,5 m kg	*2.800	*2.800					*4.150	4.100						
		6,0 m kg	*2.600	2.450			*3.200	2.600	*4.800	4.150						
		4,5 m kg	*2.550	2.000			*4.950	2.550	*5.350	4.000	*6.050	*6.050				
		3,0 m kg	*2.650	1.750			*5.350	2.450	*6.250	3.700	*7.950	6.050	*12.400	11.900		
	3,5 m	1,5 m kg	*2.900	1.700			5.650	2.300	*7.200	3.400	*9.900	5.350	*6.350	*6.350		
		0,0 m kg	*3.250	1.700			5.500	2.200	*7.900	3.150	*11.050	4.900	*6.950	*6.950		
		- 1,5 m kg	*3.950	1.850			5.450	2.100	*7.950	3.000	*11.200	4.700	*10.200	9.200		
- 3,0 m kg		*5.250	2.250					*7.500	3.000	*10.400	4.750	*15.250	9.350			
7,5 m kg		*2.750	*2.750													
6,0 m kg		*2.550	2.100			*3.950	2.700	*4.100	*4.100							
2,4 m	4,5 m kg	*2.550	1.750			*4.500	2.600	*4.700	4.100							
	3,0 m kg	*2.650	1.550	*3.350	1.650	4.950	2.500	*5.650	3.800	*7.000	6.250	*10.000	*10.000			
	1,5 m kg	*2.850	1.450	*3.950	1.550	*5.500	2.300	*6.750	3.450	*9.050	5.450					
	0,0 m kg	*3.200	1.450	*3.650	1.500	5.500	2.150	*7.550	3.150	*10.600	4.950	*7.600	*7.600			
	- 1,5 m kg	*3.800	1.600			5.400	2.050	7.950	3.000	*11.150	4.700	*9.750	9.100	*5.400	*5.400	
	- 3,0 m kg	*4.900	1.900			5.350	2.050	*7.750	2.950	*10.750	4.600	*13.700	9.150			



Arm length	A B	⊗		9,0 m		7,5 m		6,0 m		4,5 m		3,0 m		1,5 m		
 Outrigger + blade	2,4 m	7,5 m kg	*4.500	*4.500												
		6,0 m kg	*4.150	3.800						*5.450	5.300					
		4,5 m kg	*4.100	3.100			*5.450	3.400	*5.950	5.150	*7.000	*7.000				
		3,0 m kg	*4.250	2.800			5.750	3.300	*6.850	4.900	*8.900	7.900				
		1,5 m kg	*4.600	2.650			5.600	3.150	*7.700	4.600	*10.650	7.200				
		0,0 m kg	4.850	2.700			5.500	3.050	8.000	4.350	*11.450	6.850				
	2,9 m	- 1,5 m kg	5.400	3.000			5.450	3.050	7.850	4.250	*11.250	6.700	*11.150	*11.150		
		- 3,0 m kg	*6.100	3.700					*7.250	4.300	*10.050	6.800	*14.250	*14.250		
		7,5 m kg	*2.850	*2.850					*4.250	*4.250						
		6,0 m kg	*2.650	*2.650			*3.250	*3.250	*4.850	*4.850						
		4,5 m kg	*2.600	*2.600			*5.000	3.450	*5.450	5.250	*6.150	*6.150				
		3,0 m kg	*2.700	2.500			*5.450	3.350	*6.350	4.950	*8.100	8.100	*12.550	*12.550		
	3,5 m	1,5 m kg	*2.950	2.400			5.650	3.200	*7.300	4.650	*10.050	7.350	*6.450	*6.450		
		0,0 m kg	*3.350	2.400			5.500	3.050	*8.000	4.400	*11.250	6.900	*7.050	*7.050		
		- 1,5 m kg	*4.000	2.650			5.400	3.000	7.800	4.200	*11.400	6.700	*10.350	*10.350		
- 3,0 m kg		*5.350	3.150					*7.650	4.200	*10.550	6.700	*15.450	*14.050			
7,5 m kg		*2.750	*2.750													
6,0 m kg		*2.600	*2.600			*4.000	3.550	*4.200	*4.200							

 Outrigger front + rear	2,4 m	7,5 m kg	*4.500	*4.500												
		6,0 m kg	*4.150	*4.150						*5.450	*5.450					
		4,5 m kg	*4.100	3.850			*5.450	4.200	*5.950	*5.950	*7.000	*7.000				
		3,0 m kg	*4.250	3.450			*5.800	4.100	*6.850	6.000	*8.900	*8.900				
		1,5 m kg	*4.600	3.300			5.750	3.950	*7.700	5.700	*10.650	9.150				
		0,0 m kg	5.000	3.400			5.650	3.850	*8.200	5.450	*11.450	8.750				
	2,9 m	- 1,5 m kg	5.550	3.750			5.600	3.800	8.050	5.350	*11.250	8.600	*11.150	*11.150		
		- 3,0 m kg	*6.100	4.650					*7.250	5.400	*10.050	8.700	*14.250	*14.250		
		7,5 m kg	*2.850	*2.850					*4.250	*4.250						
		6,0 m kg	*2.650	*2.650			*3.250	*3.250	*4.850	*4.850						
		4,5 m kg	*2.600	*2.600			*5.000	4.250	*5.450	*5.450	*6.150	*6.150				
		3,0 m kg	*2.700	*2.700			*5.450	4.100	*6.350	6.100	*8.100	*8.100	*12.550	*12.550		
	3,5 m	1,5 m kg	*2.950	*2.950			5.800	3.950	*7.300	5.750	*10.050	9.300	*6.450	*6.450		
		0,0 m kg	*3.350	3.050			5.650	3.800	*8.000	5.500	*11.250	8.800	*7.050	*7.050		
		- 1,5 m kg	*4.000	3.350			5.550	3.750	8.000	5.300	*11.400	8.550	*10.350	*10.350		
- 3,0 m kg		*5.350	4.000					*7.650	5.300	*10.550	8.550	*15.450	*15.450			
7,5 m kg		*2.750	*2.750													
6,0 m kg		*2.600	*2.600			*4.000	*4.000	*4.200	*4.200							



- A – Reach from swing center
- B – Bucket hook height
- C – Lifting capacities, including bucket linkage (130 kg) and bucket cylinder (182 kg)



When removing linkage or cylinder, lifting capacities can be increased by their respective weights.

* Load is limited by hydraulic capacity rather than tipping. Ratings are based on SAE Standard No. J1097. Rated loads do not exceed 87% of hydraulic lift capacity or 75% of tipping load.


- Rating over front
- Rating over side
- Rating at maximum reach


Lifting Capacity

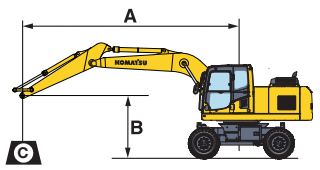
Mono boom / undercarriage width 2,75 m

Arm length	A B	⊗		9,0 m		7,5 m		6,0 m		4,5 m		3,0 m		1,5 m			
		⊗	⊗	⊗	⊗	⊗	⊗	⊗	⊗	⊗	⊗	⊗	⊗	⊗			
 Without stabilizer	2,4 m	7,5 m kg	*4.250	3.150					4.850	3.400							
		6,0 m kg	3.300	2.300					4.900	3.450							
		4,5 m kg	2.750	1.850			3.200	2.150	4.750	3.350	7.850	5.400					
		3,0 m kg	2.500	1.650			3.100	2.100	4.500	3.100	7.150	4.800					
		1,5 m kg	2.400	1.550			2.950	2.000	4.300	2.900	6.700	4.700					
		0,0 m kg	2.450	1.600			2.900	1.900	4.000	2.650	6.400	4.150					
	2,9 m	- 1,5 m kg	2.700	1.750			2.850	1.850	3.900	2.550	6.350	4.100	*9.750	7.850			
		- 3,0 m kg	3.300	2.150					4.050	2.650	6.400	4.150	*8.450	8.100			
		7,5 m kg	*2.650	2.600					*4.450	3.450							
		6,0 m kg	*2.550	1.900			3.200	2.150	4.900	3.450							
		4,5 m kg	2.350	1.550			3.150	2.100	4.750	3.300							
		3,0 m kg	2.150	1.350			3.000	2.000	4.450	3.050	7.250	4.900	14.950	9.250			
	3,5 m	1,5 m kg	2.050	1.300			2.850	1.900	4.200	2.800	6.600	4.350					
		0,0 m kg	2.100	1.300			2.750	1.750	3.900	2.550	6.200	4.000	*5.950	*5.950			
		- 1,5 m kg	2.250	1.450			2.700	1.700	3.700	2.350	6.100	3.850	*9.200	7.400			
		- 3,0 m kg	2.700	1.750			2.750	1.750	3.800	2.400	6.100	3.900	*10.200	7.600			
		7,5 m kg	*2.650	2.150			*2.700	2.200									
		6,0 m kg	2.450	1.650			3.250	2.250									
 Front or rear blade	2,4 m	7,5 m kg	*4.250	3.600					*5.050	3.850							
		6,0 m kg	*4.000	2.550					*6.800	3.900							
		4,5 m kg	*4.050	2.100			5.300	2.450	*7.450	3.750	*9.450	6.150					
		3,0 m kg	4.200	1.850			5.200	2.350	7.750	3.500	*10.850	5.450					
		1,5 m kg	4.100	1.750			5.050	2.250	7.450	3.250	*11.650	5.000					
		0,0 m kg	4.200	1.800			4.950	2.150	7.100	3.000	*11.050	4.700					
	2,9 m	- 1,5 m kg	4.650	2.000			4.950	2.150	7.000	2.900	*9.500	4.650	*9.750	9.100			
		- 3,0 m kg	*3.950	2.450					*5.300	3.050	*7.100	4.750	*8.200	*8.200			
		7,5 m kg	*2.650	*2.650					*4.450	3.950							
		6,0 m kg	*2.550	2.250			*3.850	2.550	*5.300	3.950							
		4,5 m kg	*2.550	1.850			*5.300	2.500	*6.600	3.800							
		3,0 m kg	*2.650	1.650			5.250	2.350	*7.750	3.550	*10.350	5.700	*16.700	10.950			
	3,5 m	1,5 m kg	*2.900	1.550			5.100	2.250	7.500	3.300	*11.450	5.100					
		0,0 m kg	*3.300	1.600			4.950	2.150	7.150	3.000	*11.350	4.750	*5.950	*5.950			
		- 1,5 m kg	*4.000	1.750			4.900	2.050	6.950	2.850	*10.150	4.600	*9.200	9.000			
		- 3,0 m kg	*3.900	2.100			*3.950	2.100	*5.950	2.900	*8.050	4.650	*10.200	9.200			
		7,5 m kg	*2.650	2.550			*2.700	2.550									
		6,0 m kg	*2.550	1.950			*4.150	2.600									
 Rear outrigger	2,4 m	7,5 m kg	*4.250	4.050					*5.050	4.350							
		6,0 m kg	*4.000	2.950					*6.800	4.400							
		4,5 m kg	*4.050	2.400			5.950	2.800	*7.450	4.250	*9.450	6.900					
		3,0 m kg	*4.200	2.150			5.800	2.700	*8.050	4.000	*10.850	6.200					
		1,5 m kg	4.550	2.050			5.700	2.600	*8.350	3.750	*11.650	5.750					
		0,0 m kg	4.700	2.100			5.550	2.500	*8.050	3.450	*11.050	5.450					
	2,9 m	- 1,5 m kg	*4.650	2.300			*5.150	2.450	*7.050	3.350	*9.500	5.400	*9.750	*9.750			
		- 3,0 m kg	*3.950	2.850					*5.300	3.500	*7.100	5.500	*8.200	*8.200			
		7,5 m kg	*2.650	*2.650					*4.450	*4.450							
		6,0 m kg	*2.550	*2.550			*3.850	2.900	*5.300	4.450							
		4,5 m kg	*2.550	2.150			*5.300	2.850	*6.600	4.300							
		3,0 m kg	*2.650	1.900			5.850	2.700	*7.750	4.050	*10.350	6.500	*16.700	12.750			
	3,5 m	1,5 m kg	*2.900	1.850			5.700	2.600	*8.250	3.750	*11.450	5.850					
		0,0 m kg	*3.300	1.850			5.550	2.450	8.100	3.500	*11.350	5.500	*5.950	*5.950			
		- 1,5 m kg	*4.000	2.050			5.500	2.400	*7.400	3.300	*10.150	5.350	*9.200	*9.200			
		- 3,0 m kg	*3.900	2.450			*3.950	2.450	*5.950	3.350	*8.050	5.400	*10.200	*10.200			
		7,5 m kg	*2.650	*2.650			*2.700	*2.700									
		6,0 m kg	*2.550	2.250			*4.150	2.950									



Arm length	A	⊗		9,0 m		7,5 m		6,0 m		4,5 m		3,0 m		1,5 m		
		🔧	🔧	🔧	🔧	🔧	🔧	🔧	🔧	🔧	🔧	🔧	🔧	🔧		
 Outrigger + blade	2,4 m	7,5 m kg	*4.350	*4.350					*5.100	*5.100						
		6,0 m kg	*4.100	3.750					*6.900	5.550						
		4,5 m kg	*4.100	3.150			5.400	3.600	*7.550	5.400	*9.600	8.900				
		3,0 m kg	*4.300	2.850			5.300	3.500	7.800	5.150	*11.000	8.150				
		1,5 m kg	4.200	2.750			5.150	3.400	7.500	4.850	*11.850	7.650				
		0,0 m kg	4.300	2.800			5.050	3.300	7.200	4.600	*11.250	7.300				
	2,9 m	- 1,5 m kg	4.750	3.100			5.050	3.250	7.050	4.500	*9.650	7.250	*9.900	*9.900		
		- 3,0 m kg	*4.000	3.750					*5.400	4.650	*7.200	*7.200	*8.400	*8.400		
		7,5 m kg	*2.700	*2.700					*4.500	*4.500						
		6,0 m kg	*2.600	*2.600			*3.900	3.700		*5.400	*5.400					
		4,5 m kg	*2.600	*2.600			*5.400	3.650	*6.700	5.450						
		3,0 m kg	*2.700	2.550			5.350	3.550	*7.850	5.200	*10.550	8.400	*16.950	*16.950		
3,5 m	1,5 m kg	*2.950	2.450			5.200	3.400	7.550	4.900	*11.650	7.750					
	0,0 m kg	*3.350	2.500			5.050	3.300	7.200	4.600	*11.550	7.350	*6.050	*6.050			
	- 1,5 m kg	*4.050	2.750			5.000	3.200	7.000	4.450	*10.350	7.200	*9.300	*9.300			
	- 3,0 m kg	*5.350	3.250			*4.000	3.250	*6.050	4.500	*8.200	7.250	*10.400	*10.400			
	7,5 m kg	*2.700	*2.700			*2.750	*2.750									
	6,0 m kg	*2.600	*2.600			*4.200	3.750									

 Outrigger front + rear	2,4 m	7,5 m kg	*4.350	*4.350					*5.100	*5.100						
		6,0 m kg	*4.100	*4.100					*6.900	6.700						
		4,5 m kg	*4.100	3.800			6.050	4.400	*7.550	6.500	*9.600	*9.600				
		3,0 m kg	*4.300	3.450			5.900	4.300	*8.150	6.250	*11.000	10.100				
		1,5 m kg	4.700	3.350			5.800	4.150	8.450	5.950	*11.850	9.550				
		0,0 m kg	4.800	3.450			5.700	4.050	8.100	5.650	*11.250	9.200				
	2,9 m	- 1,5 m kg	*4.750	3.800			*5.250	4.000	*7.200	5.550	*9.650	9.150	*9.900	*9.900		
		- 3,0 m kg	*4.000	*4.000					*5.400	*5.400	*7.200	*7.200	*8.400	*8.400		
		7,5 m kg	*2.700	*2.700					*4.500	*4.500						
		6,0 m kg	*2.600	*2.600			*3.900	*3.900	*5.400	*5.400						
		4,5 m kg	*2.600	*2.600			*5.400	4.400	*6.700	6.600						
		3,0 m kg	*2.700	*2.700			5.950	4.300	*7.850	6.300	*10.550	10.400	*16.950	*16.950		
3,5 m	1,5 m kg	*2.950	*2.950			5.800	4.150	*8.350	6.000	*11.650	9.700					
	0,0 m kg	*3.350	3.100			5.650	4.050	8.150	5.700	*11.550	9.250	*6.050	*6.050			
	- 1,5 m kg	*4.050	3.350			5.600	3.950	*7.550	5.500	*10.350	9.100	*9.300	*9.300			
	- 3,0 m kg	*4.000	*4.000			*4.000	4.000	*6.050	5.550	*8.200	*8.200	*10.400	*10.400			
	7,5 m kg	*2.700	*2.700			*2.750	*2.750									
	6,0 m kg	*2.600	*2.600			*4.200	*4.200									



- A – Reach from swing center
- B – Bucket hook height
- C – Lifting capacities, including bucket linkage (130 kg) and bucket cylinder (182 kg)

When removing linkage or cylinder, lifting capacities can be increased by their respective weights.

* Load is limited by hydraulic capacity rather than tipping. Ratings are based on SAE Standard No. J1097. Rated loads do not exceed 87% of hydraulic lift capacity or 75% of tipping load.


- 🔧 – Rating over front
- 🔧 – Rating over side
- ⊗ – Rating at maximum reach


Lifting Capacity

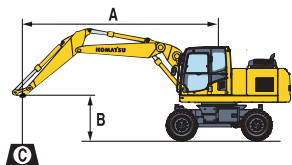
Two-piece boom / undercarriage width 2,75 m

Arm length	A B	⊗		9,0 m		7,5 m		6,0 m		4,5 m		3,0 m		1,5 m			
		⊗	⊗	⊗	⊗	⊗	⊗	⊗	⊗	⊗	⊗	⊗	⊗	⊗	⊗		
 Without stabilizer	2,4 m	7,5 m kg	*4.400	3.500					4.950	3.450							
		6,0 m kg	3.500	2.400													
		4,5 m kg	2.850	1.900			3.150	2.100	4.800	3.350	*6.850	5.550					
		3,0 m kg	2.550	1.650			3.050	2.000	4.500	3.100	7.350	4.950					
		1,5 m kg	2.450	1.550			2.900	1.900	4.250	2.800	6.700	4.350					
		0,0 m kg	2.500	1.550			2.800	1.800	4.000	2.600	6.300	4.000					
	2,9 m	- 1,5 m kg	2.750	1.750			2.750	1.750	3.900	2.500	6.200	3.900	*10.950	7.450			
		- 3,0 m kg	3.400	2.200					3.950	2.550	6.250	3.950	*13.150	7.700			
		7,5 m kg	*2.800	*2.800					*4.150	3.500							
		6,0 m kg	*2.600	2.050			*3.200	2.150	*4.800	3.550							
		4,5 m kg	2.550	1.650			3.200	2.150	4.900	3.400	*6.050	5.700					
		3,0 m kg	2.250	1.450			3.050	2.050	4.600	3.150	7.550	5.150	*12.400	9.850			
	3,5 m	1,5 m kg	2.150	1.350			2.900	1.900	4.300	2.850	6.850	4.500	*6.350	*6.350			
		0,0 m kg	2.200	1.350			2.800	1.750	4.050	2.600	6.350	4.050	*6.950	*6.950			
		- 1,5 m kg	2.400	1.500			2.700	1.700	3.850	2.450	6.150	3.850	*10.200	7.350			
- 3,0 m kg		2.900	1.850					3.850	2.450	6.150	3.850	*12.950	7.550				
7,5 m kg		*2.700	2.400														
6,0 m kg		*2.550	1.750			3.300	2.250	*4.100	3.650								
3,5 m	4,5 m kg	2.250	1.400			3.250	2.200	*4.700	2.500								
	3,0 m kg	2.000	1.250	2.100	1.300	3.100	2.050	4.700	3.200	*7.000	5.350	*10.000	*10.000				
	1,5 m kg	1.900	1.150	2.050	1.250	2.950	1.900	4.350	2.900	6.950	4.550						
	0,0 m kg	1.950	1.150	1.950	1.200	2.750	1.750	4.050	2.600	6.400	4.100	*7.600	7.550				
	- 1,5 m kg	2.100	1.250			2.650	1.650	3.850	2.450	6.100	3.850	*9.700	7.300	*5.400	*5.400		
	- 3,0 m kg	2.450	1.500			2.650	1.650	3.800	2.350	6.050	3.750	12.700	7.350				
 Front or rear blade	2,4 m	7,5 m kg	*4.400	4.000					*5.350	4.000							
		6,0 m kg	*4.100	4.800													
		4,5 m kg	*4.050	2.250			*5.350	2.450	*5.850	3.850	*6.850	6.350					
		3,0 m kg	*4.200	1.950			5.350	2.400	*6.700	3.600	*8.750	5.750					
		1,5 m kg	4.350	1.850			5.200	2.250	*7.550	3.300	*10.500	5.150					
		0,0 m kg	4.500	1.900			5.050	2.150	7.350	3.100	*11.300	4.750					
	2,9 m	- 1,5 m kg	4.950	2.100			5.000	2.150	7.250	3.000	*11.100	4.650	*10.950	9.050			
		- 3,0 m kg	*6.000	2.650					*7.100	3.050	*9.900	4.750	*14.050	9.300			
		7,5 m kg	*2.800	*2.800					*4.150	4.050							
		6,0 m kg	*2.600	2.400			*3.200	2.550	*4.800	4.050							
		4,5 m kg	*2.550	1.950			*4.950	2.500	*5.350	3.900	*6.050	*6.050					
		3,0 m kg	*2.650	1.750			*5.350	2.400	*6.250	3.650	*7.950	5.950	*12.400	11.600			
	3,5 m	1,5 m kg	*2.900	1.650			5.200	2.250	*7.200	3.350	*9.900	5.250	*6.350	*6.350			
		0,0 m kg	*3.250	1.650			5.050	2.150	*7.400	3.100	*11.050	4.800	*6.950	*6.950			
		- 1,5 m kg	*3.950	1.800			4.950	2.050	*7.200	2.950	*11.200	4.600	*10.200	8.950			
- 3,0 m kg		*5.250	2.200					*7.200	2.950	*10.400	4.650	*15.250	9.150				
7,5 m kg		*2.750	*2.750														
6,0 m kg		*2.550	2.100			*3.950	2.650	*4.100	*4.100								
3,5 m	4,5 m kg	*2.550	1.700			*4.500	2.600	*4.700	4.000								
	3,0 m kg	*2.650	1.500	*3.350	1.600	*4.950	2.450	*5.650	3.750	*7.000	6.150	*10.000	*10.000				
	1,5 m kg	*2.850	1.450	3.750	1.550	5.200	2.250	*6.750	3.400	*9.050	5.350						
	0,0 m kg	*3.200	1.450	*3.650	1.450	5.050	2.100	7.450	3.100	*10.600	4.850	*7.600	*7.600				
	- 1,5 m kg	*3.800	1.550			4.900	2.000	7.200	2.900	*11.150	4.600	*9.750	8.850	*5.400	*5.400		
	- 3,0 m kg	4.550	1.850			4.900	2.000	7.100	2.850	*10.750	4.500	*13.700	8.950				
 Rear outrigger	2,4 m	7,5 m kg	*4.400	*4.400													
		6,0 m kg	*4.100	3.200					*5.350	4.500							
		4,5 m kg	*4.050	2.600			*5.350	2.850	*5.850	4.350	*6.850	*6.850					
		3,0 m kg	*4.200	2.300			*5.700	2.750	*6.700	4.100	*8.750	6.550					
		1,5 m kg	*4.550	2.150			5.800	2.600	*7.550	3.800	*10.500	5.900					
		0,0 m kg	5.000	2.200			5.700	2.500	*8.050	3.600	*11.300	5.550					
	2,9 m	- 1,5 m kg	5.600	2.450			5.650	2.450	*8.000	3.450	*11.100	5.400	*10.950	*10.750			
		- 3,0 m kg	*6.000	3.050					*7.100	3.550	*9.900	5.500	*14.050	11.050			
		7,5 m kg	*2.800	*2.800					*4.150	*4.150							
		6,0 m kg	*2.600	*2.600			*3.200	2.900	*4.800	4.550							
		4,5 m kg	*2.550	2.300			*4.950	2.900	*5.350	4.400	*6.050	*6.050					
		3,0 m kg	*2.650	2.050			*5.350	2.750	*6.250	4.150	*7.950	6.750	*12.400	*12.400			
	3,5 m	1,5 m kg	*2.900	1.950			*5.850	2.600	*7.200	3.850	*9.900	6.050	*6.350	*6.350			
		0,0 m kg	*3.250	1.950			5.650	2.500	*7.900	3.600	*11.050	5.600	*6.950	*6.950			
		- 1,5 m kg	*3.950	2.150			5.600	2.400	*8.000	3.400	*11.200	5.400	*10.200	*10.200			
- 3,0 m kg		*5.250	2.600					*7.500	3.450	*10.400	5.400	*15.250	10.850				
7,5 m kg		*2.750	*2.750														
6,0 m kg		*2.550	2.400			*3.950	3.000	*4.100	*4.100								
3,5 m	4,5 m kg	*2.550	2.000			*4.500	2.950	4.700	4.500								
	3,0 m kg	*2.650	1.800	*3.350	1.900	*4.950	2.800	*5.650	4.250	*7.000	6.950	*10.000	*10.000				
	1,5 m kg	*2.850	1.700	*3.950	1.800	*5.500	2.650	*6.750	3.900	*9.050	6.150						
	0,0 m kg	*3.200	1.700	*3.650	1.750	5.650	2.450	*7.550	3.600	*10.600	5.650	*7.600	*7.600				
	- 1,5 m kg	*3.800	1.850			5.550	2.350	*7.950	3.400	*11.150	5.350	*9.750	*9.750	*5.400	*5.400		
	- 3,0 m kg	*4.900	2.200			5.500	2.350	*7.750	3.350	*10.750	5.300	13.700	10.650				



Arm length	A	⊗		9,0 m		7,5 m		6,0 m		4,5 m		3,0 m		1,5 m	
		⊗	⊗	⊗	⊗	⊗	⊗	⊗	⊗	⊗	⊗	⊗	⊗	⊗	
 Outrigger + blade	2,4 m	7,5 m kg	*4.500	*4.500					*5.450	*5.450					
		6,0 m kg	*4.150	4.150											
		4,5 m kg	*4.100	3.400			*5.450	3.700	*5.950	5.600	*7.000	*7.000			
		3,0 m kg	*4.250	3.050			*5.800	3.600	*6.850	5.350	*8.900	8.650			
		1,5 m kg	*4.600	2.950			5.750	3.500	*7.700	5.050	*10.650	7.950			
		0,0 m kg	4.950	3.000			5.600	3.400	8.150	4.800	*11.450	7.550			
	2,9 m	- 1,5 m kg	5.500	3.300			5.550	3.350	8.000	4.650	*11.250	7.400	*11.150	*11.150	
		- 3,0 m kg	*6.100	4.100					*7.250	4.750	*10.050	7.500	*14.250	*14.250	
		7,5 m kg	*2.850	*2.850					*4.250	*4.250					
		6,0 m kg	*2.650	*2.650			*3.250	*3.250	*4.850	*4.850					
		4,5 m kg	*2.600	*2.600			*5.000	3.750	*5.450	*5.450	*6.150	*6.150			
		3,0 m kg	*2.700	*2.700			*5.450	3.650	*6.350	5.400	*8.100	8.100	*12.550	*12.550	
3,5 m	1,5 m kg	*2.950	2.650			5.750	3.500	*7.300	5.100	*10.050	8.100	*6.450	*6.450		
	0,0 m kg	*3.350	2.650			5.600	3.350	*8.000	4.800	*11.250	7.600	*7.050	*7.050		
	- 1,5 m kg	*4.000	2.900			5.500	3.300	7.950	4.650	*11.400	7.400	*10.350	*10.350		
	- 3,0 m kg	*5.350	3.500					*7.650	4.650	*10.550	7.400	*15.450	*15.450		
	7,5 m kg	*2.750	*2.750												
	6,0 m kg	*2.600	*2.600			*4.000	3.900	*4.200	*4.200						
3,5 m	4,5 m kg	*2.600	*2.600			*4.550	3.850	*4.800	*4.800						
	3,0 m kg	*2.700	2.450	*3.400	2.550	*5.050	3.700	*5.750	5.500	*7.100	*7.100	*10.150	*10.150		
	1,5 m kg	*2.900	2.350	*4.000	2.500	*5.600	3.500	*6.850	5.150	*9.200	8.200				
	0,0 m kg	*3.250	2.350	*3.700	2.400	5.600	3.350	*7.700	4.850	*10.800	7.650	*7.700	*7.700		
	- 1,5 m kg	*3.850	2.550			5.450	3.250	7.950	4.600	*11.350	7.350	*9.850	*9.850	*5.500	*5.500
	- 3,0 m kg	*5.000	3.000			5.450	3.200	*7.850	4.550	*10.950	7.300	*13.900	13.900		


 Outrigger front + rear	2,4 m	7,5 m kg	*4.500	*4.500					*5.450	*5.450					
		6,0 m kg	*4.150	*4.150											
		4,5 m kg	*4.100	4.100			*5.450	4.450	*5.950	*5.950	*7.000	*7.000			
		3,0 m kg	*4.250	3.700			*5.800	4.350	*6.850	6.400	*8.900	*8.900			
		1,5 m kg	*4.600	3.550			5.900	4.200	*7.700	6.100	*10.650	9.800			
		0,0 m kg	5.150	3.650			5.800	4.100	*8.200	5.850	*11.450	9.400			
	2,9 m	- 1,5 m kg	5.700	4.050			5.750	4.050	*8.150	5.700	*11.250	9.250	*11.150	*11.150	
		- 3,0 m kg	*6.100	4.950					*7.250	5.800	*10.050	*9.300	*14.250	*14.250	
		7,5 m kg	*2.850	*2.850					*4.250	*4.250					
		6,0 m kg	*2.650	*2.650			*3.250	*3.250	*4.850	*4.850					
		4,5 m kg	*2.600	*2.600			*5.000	4.500	*5.450	*5.450	*6.150	*6.150			
		3,0 m kg	*2.700	*2.700			*5.450	4.400	*6.350	*6.350	*8.100	*8.100	*12.550	*12.550	
3,5 m	1,5 m kg	*2.950	*2.950			5.900	4.250	*7.300	6.150	*10.050	10.000	*6.450	*6.450		
	0,0 m kg	*3.350	3.250			5.750	4.100	*8.000	5.850	*11.250	9.450	*7.050	*7.050		
	- 1,5 m kg	*4.000	3.550			5.700	4.000	*8.150	5.700	*11.400	9.200	*10.350	*10.350		
	- 3,0 m kg	*5.350	4.250					*7.650	5.700	*10.550	8.550	*15.450	*15.450		
	7,5 m kg	*2.750	*2.750												
	6,0 m kg	*2.600	*2.600			*4.000	*4.000	*4.200	*4.200						
3,5 m	4,5 m kg	*2.600	*2.600			*4.550	*4.550	*4.800	*4.800						
	3,0 m kg	*2.700	*2.700	*3.400	3.100	*5.050	4.450	*5.750	*5.750	*7.100	*7.100	*10.150	*10.150		
	1,5 m kg	*2.900	2.900	*4.000	3.050	*5.600	4.250	*6.850	6.200	*9.200	*9.200				
	0,0 m kg	*3.250	2.900	*3.700	2.950	5.750	4.050	*7.700	5.900	*10.800	9.550	*7.700	*7.700		
	- 1,5 m kg	*3.850	3.150			5.650	3.950	*8.100	5.700	*11.350	9.200	*9.850	*9.850	*5.500	*5.500
	- 3,0 m kg	*5.000	3.650			5.600	3.950	*7.850	5.600	*10.950	9.100	*13.900	*13.900		



- A – Reach from swing center
- B – Bucket hook height
- C – Lifting capacities, including bucket linkage (130 kg) and bucket cylinder (182 kg)

When removing linkage or cylinder, lifting capacities can be increased by their respective weights.

* Load is limited by hydraulic capacity rather than tipping. Ratings are based on SAE Standard No. J1097. Rated loads do not exceed 87% of hydraulic lift capacity or 75% of tipping load.

-  – Rating over front
-  – Rating over side
-  – Rating at maximum reach

Hydraulic Wheeled Excavator

PW200-7

Standard and Optional Equipment

ENGINE

Komatsu SAA6D107E-1 turbocharged common rail direct injection diesel engine	●
EU Stage IIIA/EPA Tier III compliant	●
Suction type cooling fan	●
Automatic engine warm-up system	●
Engine overheat prevention system	●
Fuel control dial	●
Auto-deceleration function	●
Engine ignition can be password secured on request	●
Batteries 2 × 12 V/120 Ah	●

SAFETY EQUIPMENT

Rear view camera system	●
Electric horn	●
Overload warning device	●
Lockable fuel cap and covers	●
Audible travel alarm	●
Large handrails, rear-view mirrors	●
Battery main switch	●
Boom safety valves	●
Arm safety valve	●
Adjust cylinder safety valve	●
OPG Level II front guard (FOPS)	○
OPG Level II top guard (FOPS)	○
Audible travel alarm (white noise version)	○
Side view camera system	○
Super tone horn (no road approval)	○

SERVICE AND MAINTENANCE

Automatic fuel line de-aeration	●
Double element type air cleaner with dust indicator and auto dust evacuator	●
KOMTRAX™ – Komatsu wireless monitoring system	●
Multi-function video compatible colour monitor with Equipment Management and Monitoring System (EMMS) and efficiency guidance	●
Toolkit	●
Centralised greasing system	●
Automatic greasing system	○

CABIN

SpaceCab™; Highly pressurised and tightly sealed hyper viscous mounted cab with tinted safety glass windows, large roof window with sun shade, pull-up type front window with locking device, removable lower window, front window wiper with intermittent feature, sun roller blind, cigarette lighter, ashtray, luggage shelf, floor mat	●
Heated air suspension seat with lumbar support, height adjustable arm rests and retractable seat belt	●
Automatic climate control system	●
12/24 Volt power supplies	●
Beverage holder and magazine rack	●
Hot and cool box	●
Auxiliary input (MP3 jack)	●
CD radio	○
Adjustable, suspended seat	○
Lower wiper	○
Rain visor (not with OPG)	○

HYDRAULIC SYSTEM

Electronic closed-centre load sensing (E-CLSS) hydraulic system (HydrauMind)	●
Pump and engine mutual control (PEMC) system	●
6-working mode selection system; power mode, economy mode, breaker mode, attachment power and attachment economy mode, and lifting mode	●
PowerMax function	●
Adjustable PPC wrist control levers for arm, boom, bucket and swing, with sliding proportional control for attachments and 5 auxiliary buttons, with FNR switch	●
1. additional hydraulic circuit (HCU-B)	●
2. additional hydraulic circuit (HCU-D)	○
Prepared for hydraulic quick-coupler	○

OTHER EQUIPMENT

Electric refuelling pump with automatic shut off function	●
Single chassis tool box (250 ltr)	●
Additional chassis tool box (250 ltr)	○
Biodegradable oil for hydraulic system	○
Customised paint	○

UNDERCARRIAGE

Parallel blade (front and/or rear) with cylinder protection	○
2 or 4 outriggers with cylinder protection, individually adjustable	○
Twin tyres 11.00-20 16 PR	○
Single tyres Michelin 18.00-22	○
Twin tyres Nokian 16 PR	○
Fenders	○

DRIVES AND BRAKES

Fully automatic 3-speed transmission driving through front and rear planetary axles	●
Oscillating front axle (11°) with automatic and manual cylinder locking	●
Cruise control	●
2,55 m wide undercarriage	●
2,75 m wide undercarriage	○
20 or 25 km/h speed limitation	○
Transmission guard	○

LIGHTING SYSTEM

Working lights: 2 revolving frame, 1 counterweight (rear), 1 boom (LH)	●
Additional RH boom lamp	○
LED working lights	○
Beacon + rear facing cab lamp	○
1 or 2 additional beacons on counterweight	○
Additional large capacity cab roof lights (4)	○

WORK EQUIPMENT

Mono boom	○
Two-piece boom	○
2,4 m; 2,9 m; 3,5 m arms	○
Clamshell grip bar	○

Further equipment on request

- standard equipment
- optional equipment

Your Komatsu partner:

Marubeni-Komatsu Ltd, Redditch, Worcs, B98 0RT

KOMATSU

**Komatsu Europe
International NV**

Mechelsesteenweg 586
B-1800 VILVOORDE (BELGIUM)
Tel. +32-2-255 24 11
Fax +32-2-252 19 81
www.komatsu.eu

VENSS04900 07/2014

Materials and specifications are subject to change without notice.

KOMATSU is a trademark of Komatsu Ltd. Japan.