

SPECIFICATIONS



ENGINE

Model Komatsu SAA6D107E-1
 Type Common rail direct injection, water-cooled, emissionised, turbocharged, after-cooled diesel
 Engine power
 at rated engine speed 2.000 rpm
 ISO 14396 134 kW/180 HP
 ISO 9249 (net engine power) 125 kW/168 HP
 No. of cylinders 6
 Bore × stroke 107 × 124 mm
 Displacement 6,69 ltr
 Batteries 2 × 12 V/120 Ah
 Alternator 24 V/60 A
 Starter motor 24 V/5,5 kW
 Air filter type Double element type with monitor panel dust indicator and auto dust evacuator
 Cooling Suction type cooling fan



HYDRAULIC SYSTEM

Type HydraMind. Closed-centre system with load sensing and pressure compensation valves
 Additional circuits Depending on the specification up to 2 additional proportional control & 1 quick coupler circuits can be installed
 Main pump 2 variable displacement piston pumps supplying boom, arm, bucket, swing and travel circuits
 Maximum pump flow 2 × 218,4 ltr/min
 Relief valve settings
 Implement 380 bar
 Travel 380 bar
 Swing 355 bar
 Pilot circuit 37 bar



BRAKE SYSTEM

Type Dual circuit hydraulic braking system supplied from a separate gear pump.
 Service brakes Pedal actuated wet multi-disc brakes integrated into the axle hubs.
 Parking brake Electrically actuated wet multi-disc “spring actuation hydraulic release” brake integrated into the transmission.



STEERING SYSTEM

Steering control Hydraulic steering system supplied from a separate gear pump and controlled through LS orbitrol & priority valves.
 Minimum turning radius 7.050 mm (to center of outer wheel)



SWING SYSTEM

Type Axial piston motor driving through planetary double reduction gearbox
 Swing lock Electrically actuated wet multi-disc brake integrated into swing motor.
 Swing speed 0 - 12,4 rpm
 Swing torque 68,2 kNm



TRANSMISSION

Type Fully automatic power shift transmission with permanent 4 wheel drive
 Travel motors One variable displacement axial piston motor
 Maximum pressure 380 bar
 Travel modes Automatic + 3 travel modes
 Max. travel speeds
 Hi / Lo / Creep 35,0 / 9,5 / 1,5 km/h
 A max. speed restriction of 20 km/h is available as an option.
 Maximum drawbar pull 12.600 kg
 Front axle load Lower than 12.000 kg
 Rear axle load Lower than 12.000 kg
 Axle oscillation 11° Lockable in any position from the operator cab.



COOLANT AND LUBRICANT CAPACITY (REFILLING)

Fuel tank 370 ltr
 Radiator 17,6 ltr
 Engine oil 25,4 ltr
 Swing drive 6,6 ltr
 Hydraulic tank 166 ltr
 Transmission 2,9 ltr
 Front differential 13,5 ltr
 Rear differential 14 ltr
 Front axle hub 2,85 ltr
 Rear axle hub 2,0 ltr
 Swing pinion grease bath amount 33 ltr



ENVIRONMENT

Engine emissions Fully complies with EU Stage IIIA and EPA Tier III exhaust emission regulations
 Noise levels
 LwA external 103 dB(A) (2000/14/EC Stage II)
 LpA operator ear 72 dB(A) (ISO 6396 dynamic test)
 Vibration levels (EN 12096:1997)*
 Hand/arm ≤ 2,5 m/s² (uncertainty K = 0,275 m/s²)
 Body ≤ 0,5 m/s² (uncertainty K = 0,175 m/s²)
 * for the purpose of risk assessment under directive 2002/44/EC, please refer to ISO/TR 25398:2006.



OPERATING WEIGHT (APPR.)

Operating weight, including specified work equipment, 2.400 mm arm, operator, lubricant, coolant, full fuel tank and the standard equipment. Weights are without bucket.

UNDERCARRIAGE ATTACHMENT TYPE	MONO BOOM		TWO-PIECE BOOM	
	Standard counterweight	HD counterweight	Standard counterweight	HD counterweight
Undercarriage type				
Without stabilizer	19.490 kg	20.240 kg	20.150 kg	20.910 kg
Rear blade	20.400 kg	21.150 kg	21.060 kg	21.820 kg
Rear outrigger	21.480 kg	21.320 kg	22.140 kg	22.900 kg
2 outriggers + blade	22.390 kg	22.230 kg	23.050 kg	23.810 kg
4 outriggers	22.560 kg	22.400 kg	23.220 kg	23.980 kg



BUCKET OPTIONS & DIGGING FORCES

Specifications and equipment may vary according to regional availability.

BUCKET AND ARM COMBINATIONS			ARM LENGTH							
Width	Bucket		Standard counterweight				HD counterweight			
	Capacity (SAE)	Weight	1,8 m	2,4 m	2,9 m	3,5 m	1,8 m	2,4 m	2,9 m	3,5 m
600 mm	0,48 m ³	480 kg	○	○	○	○	○	○	○	○
700 mm	0,55 m ³	530 kg	○	○	○	○	○	○	○	○
800 mm	0,63 m ³	580 kg	○	○	○	○	○	○	○	○
900 mm	0,71 m ³	610 kg	○	○	○	○	○	○	○	○
1.000 mm	0,78 m ³	650 kg	○	○	○	○	○	○	○	○
1.100 mm	0,86 m ³	700 kg	○	○	○	○	○	○	○	○
1.200 mm	0,96 m ³	760 kg	○	○	○	□	○	○	○	○
1.300 mm	1,03 m ³	810 kg	○	○	□	△	○	○	○	□
1.400 mm	1,11 m ³	870 kg	○	□	□	△	○	○	○	□
1.500 mm	1,19 m ³	930 kg	○	□	△	-	○	○	□	△
1.600 mm	1,49 m ³	1.100 kg	△	-	-	-	□	△	△	-
1.700 mm	1,58 m ³	1.150 kg	△	-	-	-	△	△	-	-
1.800 mm	1,68 m ³	1.200 kg	-	-	-	-	△	-	-	-

Please consult with your distributor for the correct selection of buckets and attachments to suit the application. The recommendations are given as a guide only, based on typical operating conditions.

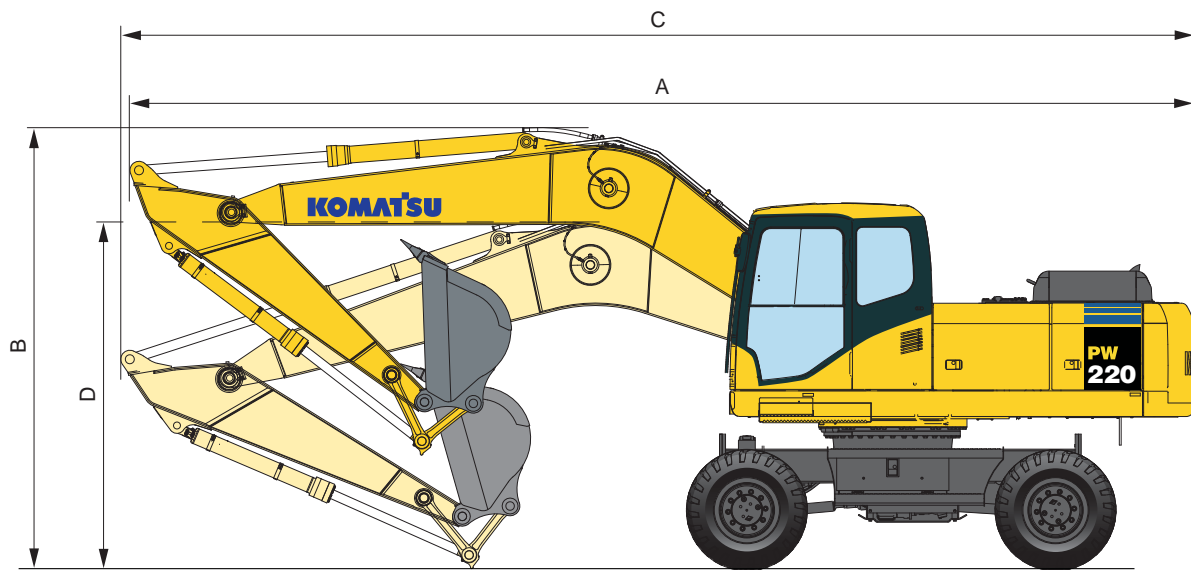
- Material weight up to 1,8 t/m³
- Material weight up to 1,5 t/m³
- △ Material weight up to 1,2 t/m³
- Not usable

BUCKET AND ARM FORCE				
Arm length	1.800 mm	2.400 mm	2.900 mm	3.500 mm
Bucket digging force	16.620 kg*	16.620 kg*	14.170 kg	14.170 kg
Bucket digging force at PowerMax	17.950 kg*	17.950 kg*	15.190 kg	15.190 kg
Arm crowd force	13.800 kg	12.200 kg	10.300 kg	8.500 kg
Arm crowd force at PowerMax	14.800 kg	13.000 kg	11.000 kg	9.100 kg

* With optional large bucket cylinder

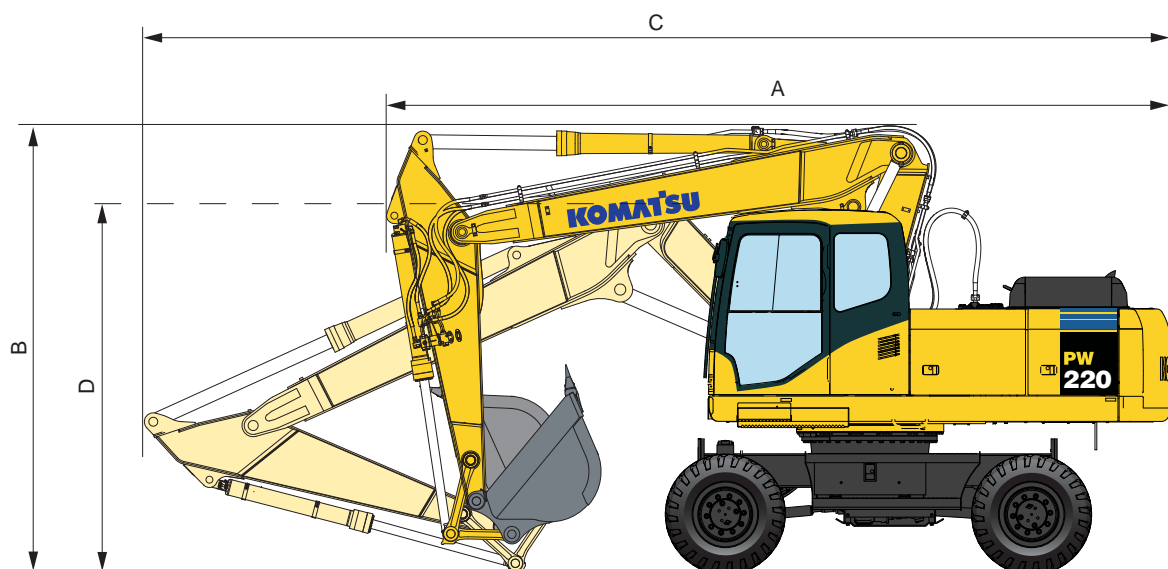
DIMENSIONS

MONO BOOM



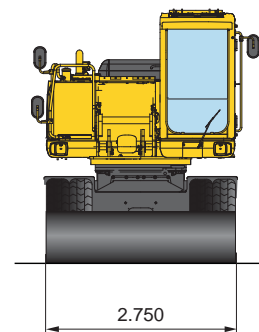
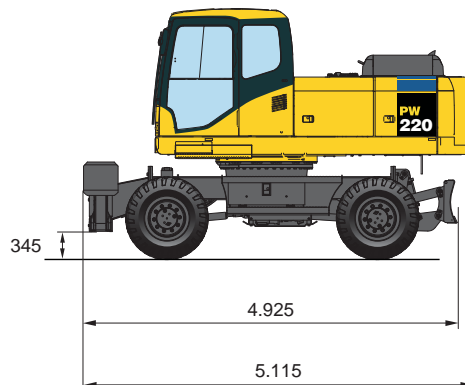
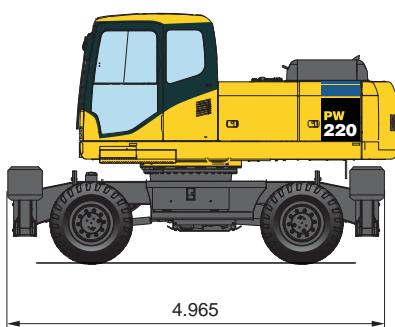
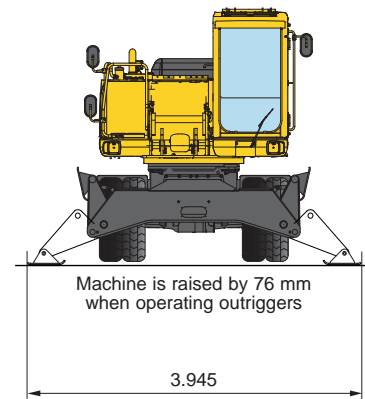
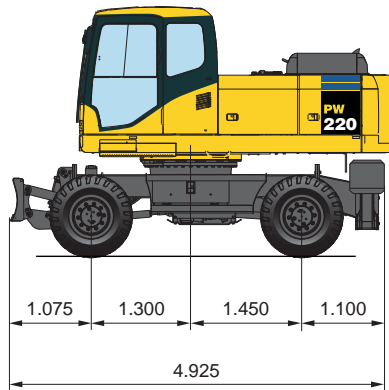
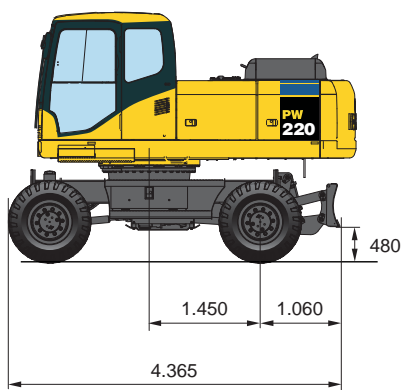
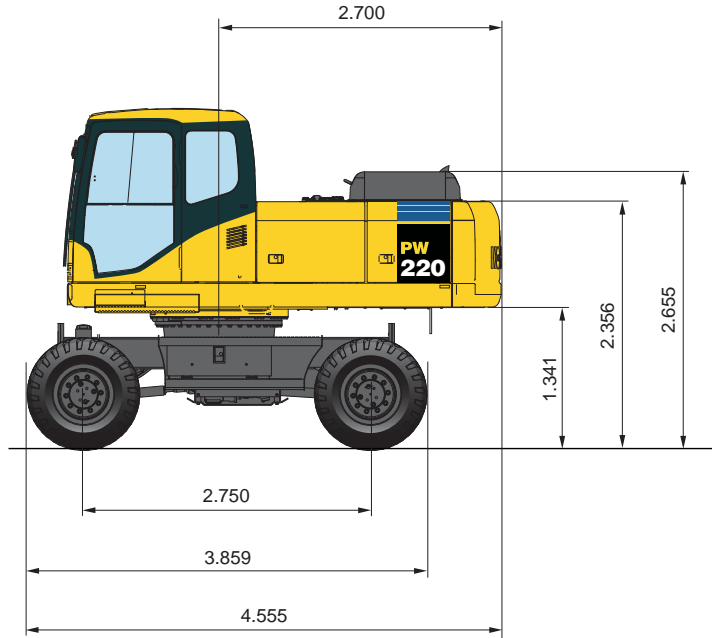
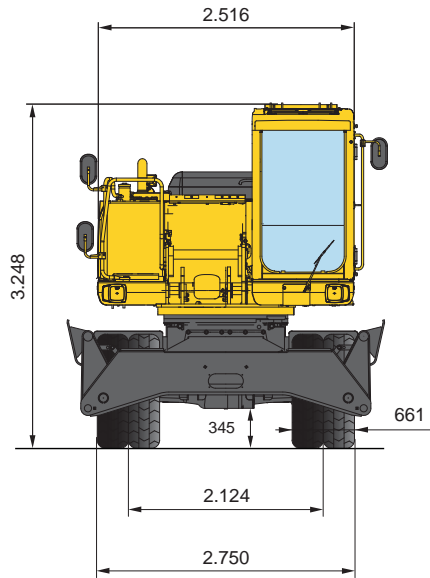
Arm length	Driving position		Transport position	
	A	B	C	D
1.800 mm	9.479 mm	3.920 mm	9.688 mm	3.272 mm
2.400 mm	9.435 mm	3.909 mm	9.659 mm	3.200 mm
2.900 mm	9.427 mm	3.926 mm	9.592 mm	3.019 mm
3.500 mm	9.467 mm	3.999 mm	9.645 mm	3.573 mm

TWO-PIECE BOOM



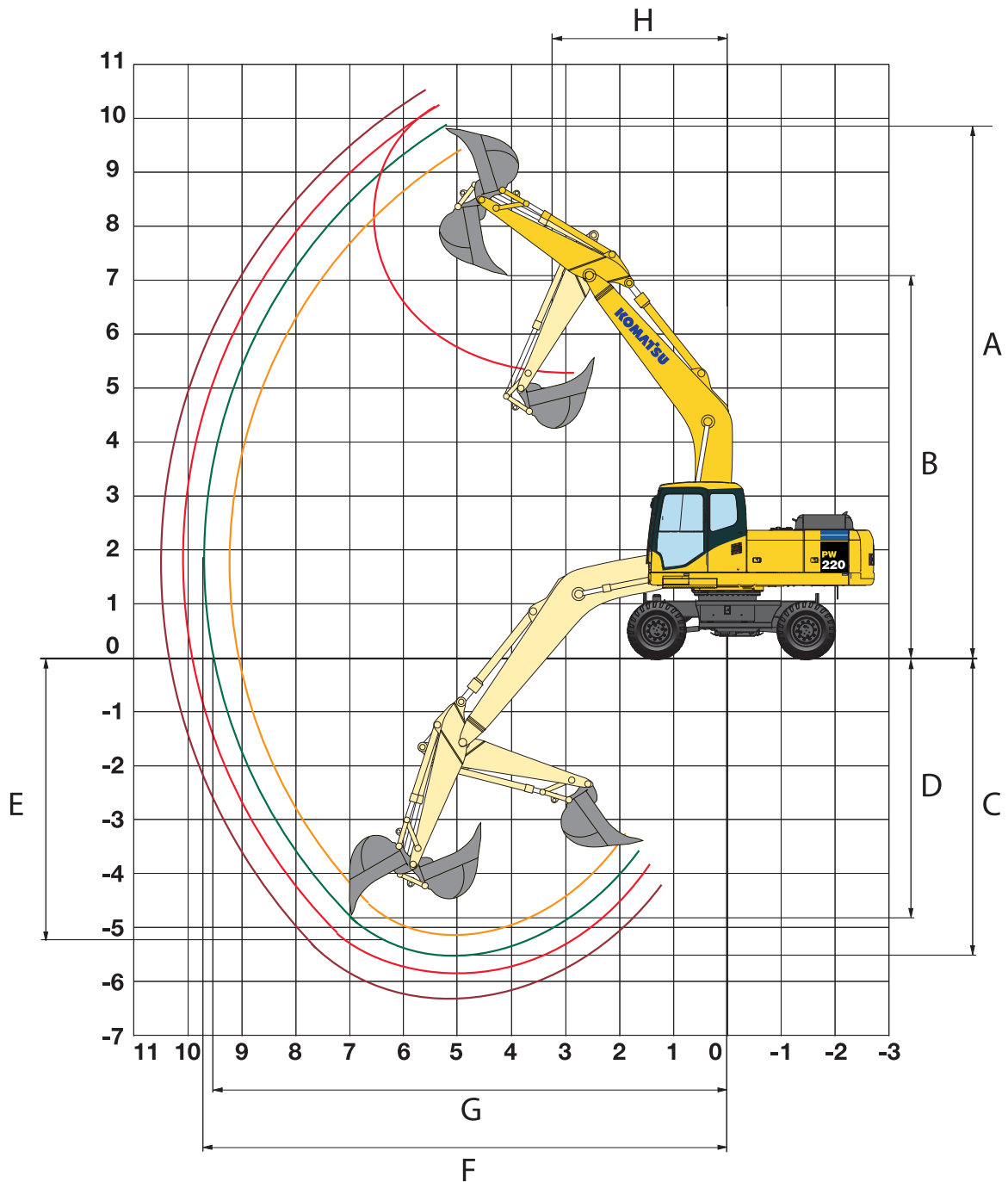
Arm length	Driving position		Transport position	
	A	B	C	D
1.800 mm	7.070 mm	3.995 mm	9.466 mm	3.054 mm
2.400 mm	7.078 mm	3.995 mm	9.370 mm	3.198 mm
2.900 mm	7.000 mm	4.011 mm	9.289 mm	3.100 mm
3.500 mm	7.218 mm	4.519 mm	9.225 mm	3.716 mm

DIMENSIONS & UNDERCARRIAGE



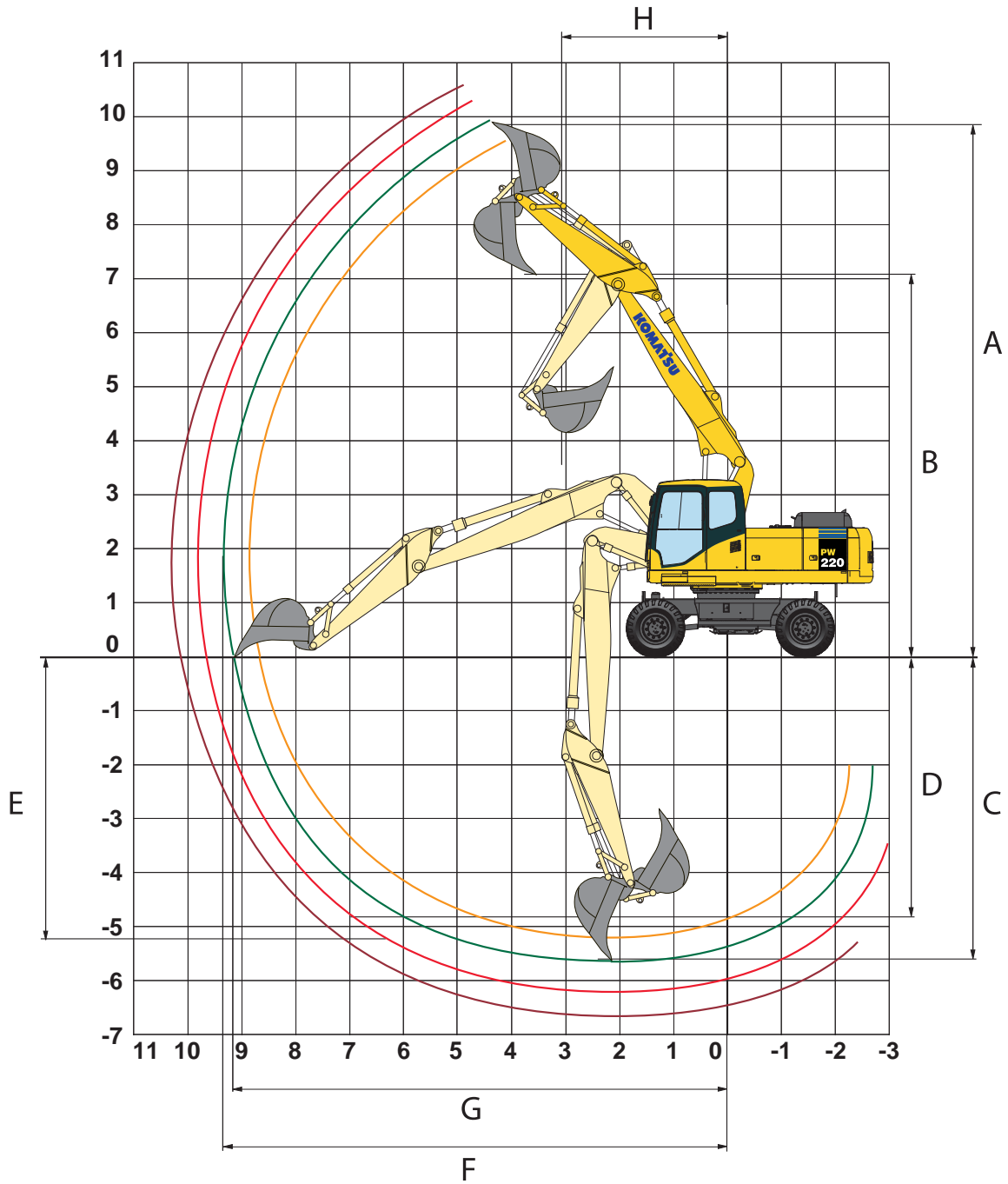
WORKING RANGE

MONO BOOM



ARM LENGTH		1.800 mm	2.400 mm	2.900 mm	3.500 mm
A	Max. digging height	9.467 mm	9.883 mm	10.003 mm	10.438 mm
B	Max. dumping height	6.704 mm	7.057 mm	7.229 mm	7.612 mm
C	Max. digging depth	4.791 mm	5.402 mm	5.917 mm	6.500 mm
D	Max. vertical wall digging depth	4.141 mm	4.745 mm	5.227 mm	5.809 mm
E	Max. digging depth of cut for 2,44 m level	4.575 mm	5.225 mm	5.763 mm	6.366 mm
F	Max. digging reach	9.061 mm	9.651 mm	10.060 mm	10.642 mm
G	Max. digging reach at ground level	8.867 mm	9.438 mm	9.875 mm	10.478 mm
H	Min. swing radius	3.906 mm	3.201 mm	3.143 mm	3.148 mm

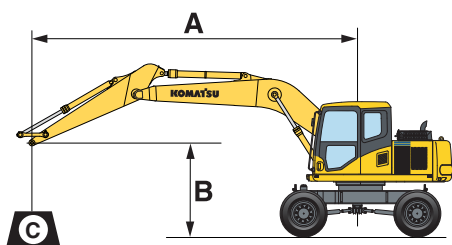
TWO-PIECE BOOM



ARM LENGTH		1.800 mm	2.400 mm	2.900 mm	3.500 mm
A	Max. digging height	9.532 mm	9.842 mm	10.168 mm	10.434 mm
B	Max. dumping height	6.670 mm	6.982 mm	7.298 mm	7.574 mm
C	Max. digging depth	5.186 mm	5.785 mm	6.285 mm	6.860 mm
D	Max. vertical wall digging depth	4.104 mm	4.666 mm	5.208 mm	5.768 mm
E	Max. digging depth of cut for 2,44 m level	5.119 mm	5.713 mm	6.226 mm	6.793 mm
F	Max. digging reach	8.818 mm	9.348 mm	9.822 mm	10.338 mm
G	Max. digging reach at ground level	8.599 mm	9.144 mm	9.634 mm	10.156 mm
H	Min. swing radius	2.594 mm	3.121 mm	2.745 mm	2.866 mm

LIFTING CAPACITY

MONO BOOM



HD counterweight

- A – Reach from swing centre
- B – Bucket hook height
- C – Lifting capacities, including bucket linkage (130 kg) and bucket cylinder (182 kg)

- Rating over front
- Rating over side
- Rating at maximum reach

When removing linkage or cylinder, lifting capacities can be increased by their respective weights

* Load is limited by hydraulic capacity rather than tipping.
Ratings are based on SAE Standard No. J1097.
Rated loads do not exceed 87% of hydraulic lift capacity or 75% of tipping load.

Arm length	A	B							9,0 m		7,5 m		6,0 m		4,5 m		3,0 m		1,5 m	

Without stabilizer	B	A	1,800 mm		2,400 mm		2,900 mm		3,500 mm												
7.5 m	kg	*5.560	5.060																		
6.0 m	kg	4.910	3.660																		
4.5 m	kg	4.110	3.060																		
3.0 m	kg	3.760	2.810																		
1.5 m	kg	3.660	2.710																		
0.0 m	kg	3.760	2.760																		
-1.5 m	kg	4.110	3.010																		
-3.0 m	kg	*4.810	3.610																		
7.5 m	kg	*5.010	4.260																		
6.0 m	kg	4.360	3.260																		
4.5 m	kg	3.760	2.810																		
3.0 m	kg	3.460	2.560																		
1.5 m	kg	3.360	2.510																		
0.0 m	kg	3.410	2.510																		
-1.5 m	kg	3.710	2.710																		
-3.0 m	kg	4.310	3.160																		
7.5 m	kg	*3.410	*3.410																		
6.0 m	kg	*3.310	2.960																		
4.5 m	kg	*3.310	2.560																		
3.0 m	kg	3.210	2.360																		
1.5 m	kg	3.110	2.310																		
0.0 m	kg	3.160	2.310																		
-1.5 m	kg	3.360	2.460																		
-3.0 m	kg	3.810	2.810																		
7.5 m	kg	*3.410	3.210																		
6.0 m	kg	*3.310	2.660																		
4.5 m	kg	3.160	2.360																		
3.0 m	kg	2.910	2.160																		
1.5 m	kg	2.860	2.110																		
0.0 m	kg	2.860	2.110																		
-1.5 m	kg	3.010	2.210																		
-3.0 m	kg	3.410	2.460																		



Without stabilizer

Rear blade	B	A	1,800 mm		2,400 mm		2,900 mm		3,500 mm												
7.5 m	kg	*5.560	*5.560																		
6.0 m	kg	*5.210	4.110																		
4.5 m	kg	*5.160	3.460																		
3.0 m	kg	*5.410	3.160																		
1.5 m	kg	5.760	3.060																		
0.0 m	kg	5.910	3.110																		
-1.5 m	kg	*6.260	3.260																		
-3.0 m	kg	*4.810	4.110																		
7.5 m	kg	*5.010	4.810																		
6.0 m	kg	*4.760	3.710																		
4.5 m	kg	*4.810	3.210																		
3.0 m	kg	*4.960	2.960																		
1.5 m	kg	5.360	2.910																		
0.0 m	kg	5.460	2.960																		
-1.5 m	kg	5.960	3.160																		
-3.0 m	kg	*5.210	3.660																		
7.5 m	kg	*3.410	*3.410																		
6.0 m	kg	*3.310	3.310																		
4.5 m	kg	*3.310	2.860																		
3.0 m	kg	*3.410	2.660																		
1.5 m	kg	*3.660	2.560																		
0.0 m	kg	*4.060	2.610																		
-1.5 m	kg	*4.760	2.760																		
-3.0 m	kg	*5.110	3.160																		
7.5 m	kg	*3.410	*3.410																		
6.0 m	kg	*3.310	2.960																		
4.5 m	kg	*3.310	2.610																		
3.0 m	kg	*3.410	2.460																		
1.5 m	kg	*3.660	2.360																		
0.0 m	kg	*4.010	2.360																		
-1.5 m	kg	*4.660	2.510																		
-3.0 m	kg	*5.060	2.810																		



Rear blade

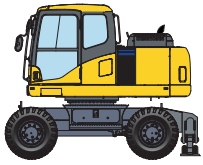
Arm length	A	9,0 m		7,5 m		6,0 m		4,5 m		3,0 m		1,5 m	


Rear outrigger	B	1.800 mm		2.400 mm		2.900 mm		3.500 mm					
7,5 m	kg	*5.560	*5.560										
6,0 m	kg	*5.210	4.510										
4,5 m	kg	*5.160	3.810										
3,0 m	kg	*5.410	3.460										
1,5 m	kg	*5.860	3.360										
0,0 m	kg	6.510	3.460										
-1,5 m	kg	*6.010	3.760										
-3,0 m	kg	*4.810	4.560										
7,5 m	kg	*5.010	*5.010										
6,0 m	kg	*4.760	4.010										
4,5 m	kg	*4.810	3.460										
3,0 m	kg	*4.960	3.210										
1,5 m	kg	*5.360	3.110										
0,0 m	kg	5.910	3.160										
-1,5 m	kg	*5.910	3.410										
-3,0 m	kg	*5.110	3.960										
7,5 m	kg	*3.410	*3.410										
6,0 m	kg	*3.310	*3.310										
4,5 m	kg	*3.310	3.160										
3,0 m	kg	*3.410	2.960										
1,5 m	kg	*3.660	2.860										
0,0 m	kg	*4.060	2.910										
-1,5 m	kg	*4.760	3.110										
-3,0 m	kg	*5.110	3.510										
7,5 m	kg	*3.410	*3.410										
6,0 m	kg	*3.310	3.260										
4,5 m	kg	*3.310	2.910										
3,0 m	kg	*3.410	2.710										
1,5 m	kg	*3.660	2.610										
0,0 m	kg	*4.010	2.660										
-1,5 m	kg	*4.660	2.810										
-3,0 m	kg	*5.060	3.110										


Outrigger + blade	B	1.800 mm		2.400 mm		2.900 mm		3.500 mm					
7,5 m	kg	*5.610	*5.610										
6,0 m	kg	*5.260	*5.260										
4,5 m	kg	*5.260	4.660										
3,0 m	kg	*5.460	4.260										
1,5 m	kg	5.810	4.160										
0,0 m	kg	6.010	4.260										
-1,5 m	kg	*6.110	4.660										
-3,0 m	kg	*4.910	*4.910										
7,5 m	kg	*5.110	*5.110										
6,0 m	kg	*4.860	*4.860										
4,5 m	kg	*4.860	4.260										
3,0 m	kg	*5.060	3.910										
1,5 m	kg	5.360	3.810										
0,0 m	kg	5.460	3.910										
-1,5 m	kg	5.960	4.210										
-3,0 m	kg	*5.210	4.910										
7,5 m	kg	*3.460	*3.460										
6,0 m	kg	*3.360	*3.360										
4,5 m	kg	*3.360	3.360										
3,0 m	kg	*3.460	3.360										
1,5 m	kg	*3.710	3.510										
0,0 m	kg	*4.110	3.560										
-1,5 m	kg	*4.810	3.810										
-3,0 m	kg	*5.210	4.360										
7,5 m	kg	*3.460	*3.460										
6,0 m	kg	*3.360	*3.360										
4,5 m	kg	*3.360	3.360										
3,0 m	kg	*3.460	3.310										
1,5 m	kg	*3.710	3.260										
0,0 m	kg	*4.060	3.260										
-1,5 m	kg	*4.710	3.460										
-3,0 m	kg	*5.160	3.860										

Outrigger front + rear	B	1.800 mm		2.400 mm		2.900 mm		3.500 mm					
7,5 m	kg	*5.610	*5.610										
6,0 m	kg	*5.260	*5.260										
4,5 m	kg	*5.260	*5.260										
3,0 m	kg	*5.460	5.010										
1,5 m	kg	*5.910	4.860										
0,0 m	kg	6.610	5.010										
-1,5 m	kg	*6.110	5.510										
-3,0 m	kg	*4.910	*4.910										
7,5 m	kg	*5.110	*5.110										
6,0 m	kg	*4.860	*4.860										
4,5 m	kg	*4.860	4.610										
3,0 m	kg	*5.060	4.610										
1,5 m	kg	5.460	4.460										
0,0 m	kg	6.010	4.560										
-1,5 m	kg	*6.010	4.960										
-3,0 m	kg	*5.210	*5.210										
7,5 m	kg	*3.460	*3.460										
6,0 m	kg	*3.360	*3.360										
4,5 m	kg	*3.360	3.360										
3,0 m	kg	*3.460	3.460										
1,5 m	kg	*3.710	3.710										
0,0 m	kg	*4.110	3.860										
-1,5 m	kg	*4.810	4.110										
-3,0 m	kg	*5.360	4.760										
7,5 m	kg	*3.460	*3.460										
6,0 m	kg	*3.360	*3.360										
4,5 m	kg	*3.360	3.360										
3,0 m	kg	*3.460	3.460										
1,5 m	kg	*3.710	3.710										
0,0 m	kg	*4.060	3.860										
-1,5 m	kg	*4.710	4.060										
-3,0 m	kg	*5.160	4.560										

Arm length	A	9,0 m		7,5 m		6,0 m		4,5 m		3,0 m		1,5 m	

 Rear outrigger	1.800 mm	7,5 m	kg	*5.810	*5.810					*7.760	*7.760				
		6,0 m	kg	*5.310	4.860			*7.360	5.510	*7.860	*7.860				
		4,5 m	kg	*5.210	4.060			*7.810	5.410	*9.210	8.360	*12.760	*12.760		
		3,0 m	kg	*5.360	3.660		*6.910	3.760	*8.610	5.160	*11.060	7.510			
		1,5 m	kg	*5.810	3.510		7.060	3.660	*9.360	4.910	*12.760	7.110			
		0,0 m	kg	*6.560	3.610		*6.760	3.610	*9.660	4.710	*13.110	6.860			
			-1,5 m	kg	*7.710	3.960			*9.310	4.710	*12.460	6.810	*12.810	12.810	
			-3,0 m	kg							*10.610	7.010			
		2.400 mm	7,5 m	kg	*5.160	*5.160									
	6,0 m		kg	*4.860	4.310			*6.610	5.660						
	4,5 m		kg	*4.810	3.660		*6.310	3.910	*7.210	5.560	*8.260	*8.260			
	3,0 m		kg	*4.960	3.360		*7.010	3.810	*8.110	5.310	*10.310	7.960			
	1,5 m		kg	*5.310	3.210		7.060	3.710	*9.060	5.010	*12.210	7.310			
	0,0 m		kg	*5.960	3.260		6.960	3.610	*9.610	4.760	*13.110	6.960			
			-1,5 m	kg	6.860	3.560	6.910	3.560	*9.560	4.660	*12.910	6.810	*11.710	*11.710	
			-3,0 m	kg	*7.360	4.210			*8.560	4.710	*11.610	6.910	*16.160	13.010	
	2.900 mm	7,5 m	kg	*3.560	*3.560					*4.910	*4.910				
6,0 m		kg	*3.360	*3.360			*3.960	*3.960	*5.910	5.760					
4,5 m		kg	*3.310	*3.310			*5.710	3.960	*6.610	5.610	*7.060	*7.060			
3,0 m		kg	*3.410	3.060		*6.660	3.860	*7.610	5.360	*9.460	8.160	*14.210	*14.210		
1,5 m		kg	*3.660	2.960		7.110	3.710	*8.660	5.060	*11.610	7.460	*7.110	*7.110		
0,0 m		kg	*4.010	3.010		6.960	3.560	*9.410	4.810	*12.860	7.010	*7.710	*7.710		
		-1,5 m	kg	*4.710	3.210	6.860	3.510	*9.560	4.610	*13.010	6.810	*10.960	*10.960		
		-3,0 m	kg	*6.010	3.710			*9.010	4.660	*12.160	6.810	*16.010	12.860		
	3.500 mm	7,5 m	kg	*3.510	*3.510										
6,0 m		kg	*3.310	*3.310			*4.710	4.110	*5.260	*5.260					
4,5 m		kg	*3.310	3.060			*5.510	4.010	*5.860	5.710					
3,0 m		kg	*3.410	2.810	*4.110	2.910	*6.210	3.910	*7.010	5.460	*8.410	8.360	*11.610	*11.610	
1,5 m		kg	*3.610	2.710	*4.710	2.860	*6.810	3.710	*8.160	5.110	*10.660	7.560			
0,0 m		kg	*3.960	2.760	*4.410	2.760	6.960	3.560	*9.060	4.810	*12.410	7.060	*8.360	*8.360	
		-1,5 m	kg	*4.560	2.910			6.810	3.460	*9.510	4.610	*12.960	6.760	*10.510	*10.510
		-3,0 m	kg	*5.660	3.260			6.810	3.460	*9.260	4.610	*12.560	6.710	*14.460	12.610

 Outrigger + blade	1.800 mm	7,5 m	kg	*5.860	*5.860					*7.860	*7.860				
		6,0 m	kg	*5.360	*5.360					*7.460	6.860	*8.010	*8.010		
		4,5 m	kg	*5.260	5.010					*7.910	6.760	*9.360	*9.360	*12.910	*12.910
		3,0 m	kg	*5.460	4.560			*7.010	4.660	*8.760	6.460	*11.210	9.660		
		1,5 m	kg	*5.860	4.410			6.960	4.560	*9.510	6.210	*12.960	9.210		
		0,0 m	kg	*6.660	4.510			6.860	4.510	*9.510	5.960	*13.310	8.960		
			-1,5 m	kg	7.660	4.960			*9.460	5.960	*12.660	8.910	*13.010	*13.010	
			-3,0 m	kg							*10.810	9.110			
		2.400 mm	7,5 m	kg	*5.260	*5.260									
	6,0 m		kg	*4.910	*4.910					*6.710	*6.710				
	4,5 m		kg	*4.860	4.510			*6.360	4.860	*7.310	6.860	*8.360	*8.360		
	3,0 m		kg	*5.010	4.160			7.110	4.760	*8.260	6.610	*10.510	10.160		
	1,5 m		kg	*5.360	4.010			6.960	4.610	*9.160	6.310	*12.410	9.460		
	0,0 m		kg	*6.010	4.110			6.860	4.510	*9.610	6.060	*13.310	9.060		
			-1,5 m	kg	6.760	4.460	6.810	4.460	*9.460	5.910	*13.110	8.910	*11.910	*11.910	
			-3,0 m	kg	*7.460	5.260			*8.710	6.010	*11.810	9.010	*16.410	*16.410	
	2.900 mm	7,5 m	kg	*3.610	*3.610					*5.010	*5.010				
6,0 m		kg	*3.410	*3.410			*4.010	*4.010	*6.010	*6.010					
4,5 m		kg	*3.360	*3.360			*5.760	4.910	*6.710	*6.710	*7.160	*7.160			
3,0 m		kg	*3.460	*3.460			*6.760	4.760	*7.710	*6.660	*9.610	*9.610	*14.460	*14.460	
1,5 m		kg	*3.710	*3.710			7.010	4.610	*8.810	6.360	*11.760	9.610	*7.210	*7.210	
0,0 m		kg	*4.110	3.760			6.860	4.510	*9.560	6.060	*13.060	9.110	*7.810	*7.810	
		-1,5 m	kg	*4.760	4.010	6.760	4.410	*9.410	5.910	*13.210	8.910	*11.110	*11.110		
		-3,0 m	kg	*6.110	3.910			*9.160	5.910	*12.360	8.910	*16.210	*16.210		
	3.500 mm	7,5 m	kg	*3.510	*3.510										
6,0 m		kg	*3.360	*3.360			*4.760	*4.760	*5.310	*5.310					
4,5 m		kg	*3.360	*3.360			*5.610	4.960	*5.960	*5.960					
3,0 m		kg	*3.460	*3.460	*4.160	3.610	*6.310	4.810	*7.110	6.760	*8.510	*8.510	*11.810	*11.810	
1,5 m		kg	*3.660	3.410	*4.760	3.560	*6.910	4.660	*8.260	6.410	*10.860	9.710			
0,0 m		kg	*4.010	3.410	*4.460	3.460	6.860	4.460	*9.210	6.110	*12.560	9.210	*8.460	*8.460	
		-1,5 m	kg	*4.610	3.610			6.710	4.360	*9.410	5.860	*13.210	8.860	*10.610	*10.610
		-3,0 m	kg	*5.760	4.110			6.710	4.360	*9.360	5.810	*12.760	8.810	*14.660	*14.560

 Outrigger front + rear	1.800 mm	7,5 m	kg	*5.860	*5.860					*7.860	*7.860				
		6,0 m	kg	*5.360	*5.360					*7.460	*7.460	*8.010	*8.010		
		4,5 m	kg	*5.260	*5.260					*7.910	7.910	*9.360	*9.360	*12.910	*12.910
		3,0 m	kg	*5.460	5.260			*7.010	5.460	*8.760	7.610	*11.210	*11.210		
		1,5 m	kg	*5.860	5.110			7.110	5.360	*9.510	7.310	*12.960	11.160		
		0,0 m	kg	*6.660	5.260			*6.860	5.260	*9.760	7.110	*13.310	10.860		
			-1,5 m	kg	*7.810	5.810			*9.460	7.060	*12.660	10.860	*13.010	*13.010	
			-3,0 m	kg							*10.810	*10.810			
		2.400 mm	7,5 m	kg	*5.260	*5.260					*6.710	*6.710			
	6,0 m		kg	*4.910	*4.910					*6.710	*6.710				
	4,5 m		kg	*4.860	*4.860			*6.360	5.610	*7.310	*7.310	*8.360	*8.360		
	3,0 m		kg	*5.010	4.810			7.110	5.510	*8.260	7.710	*10.510	*10.510		
	1,5 m		kg	*5.360	4.660			7.160	5.410	*9.160	7.410	*12.410	11.410		
	0,0 m		kg	*6.010	4.760			7.010	5.260	*9.760	7.160	*13.310	11.010		
			-1,5 m	kg	6.910	5.210	7.010	5.260	*9.710	7.060	*13.110	10.860	*11.910	*11.910	
			-3,0 m	kg	*7.460	6.210			*8.710	7.110	*11.760	10.960	*16.410	*16.410	
	2.900 mm	7,5 m	kg	*3.610	*3.610					*5.010	*5.010				
6,0 m		kg	*3.410	*3.410			*4.010	*4.010	*6.010	*6.010					
4,5 m		kg	*3.360	*3.360			*5.760	5.260	*6.710	*6.710	*7.160	*7.160			
3,0 m		kg	*3.460	*3.460			*6.760	5.160	*7.710	7.260	*9.610	*9.610	*14.460	*14.460	
1,5 m		kg	*3.710	*3.710			6.660	5.010	*8.810	6.910	*11.760	10.760	*7.210	*7.210	
0,0 m		kg	*4.110	4.010			6.510	4.860	*9.160	6.610	*13.060	10.210	*7.810	*7.810	
		-1,5 m	kg	*4.760	4.310	6.460	4.760	*8.960	6.460	*13.210	9.960	*11.110	*11.110		
		-3,0 m	kg	*6.110	5.010			*9.010	6.460	*12.360	9.960	*16.210	*16.210		
	3.500 mm	7,5 m	kg	*3.510	*3.510										
6,0 m		kg	*3.360	*3.360			*4.760	*4.760	*5.310	*5.310					
4,5 m		kg	*3.360	*3.360			*5.610	*5.610	*5.960	*5.960					
3,0 m		kg	*3.460	*3.460	*4.160	*4.160	*6.310	5.610	*7.110	*7.110	*8.510	*8.510	*11.810	*11.810	
1,5 m		kg	*3.660	*3.660	*4.760	4.110	*6.910	5.410	*8.260	7.510	*10.860	*10.860			
0,0 m		kg	*4.010	*4.010	*4.460	4.060	7.010	5.260	*9.210	7.210	*12.560	11.160	*8.460	*8.460	
		-1,5 m	kg	*4.610	4.260	6.910	5.110	*9.660	7.010	*13.210	10.810	*10.610	*10.610	*6.260	*6.260
		-3,0 m	kg	*5.760	4.810			6.860	5.110	*9.410	6.910	*12.760	10.710	*14.660	*14.660