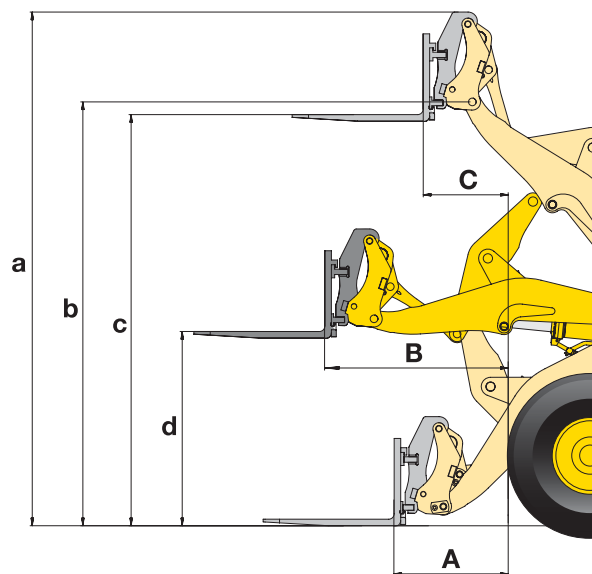


Dimensions & Performance Figures

FORK TINES

Sales code		C53
Fork tine length	mm	1.500
A Max. reach at ground level	mm	1.140
B Max. reach	mm	1.780
C Max. reach at max. stacking height	mm	865
a Max. height fork-carrier	mm	4.995
b Hinge pin height	mm	4.155
c Max. stacking height	mm	3.985
d Height of forks at maximum reach	mm	1.875
Max. tipping load, straight	kg	10.585
Max. tipping load, articulated	kg	9.512
Max. payload as per EN 474-3, 80%	kg	7.000
Max. payload as per EN 474-3, 60%	kg	5.720
Weight in working order with fork tines	kg	18.500

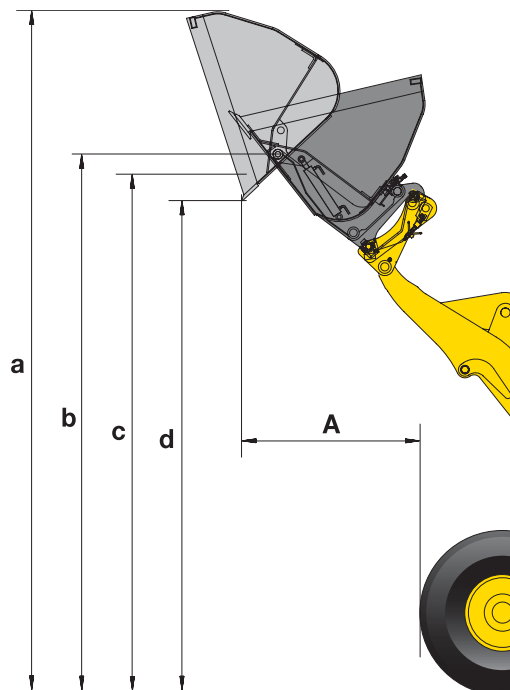


HIGH-DUMP BUCKET

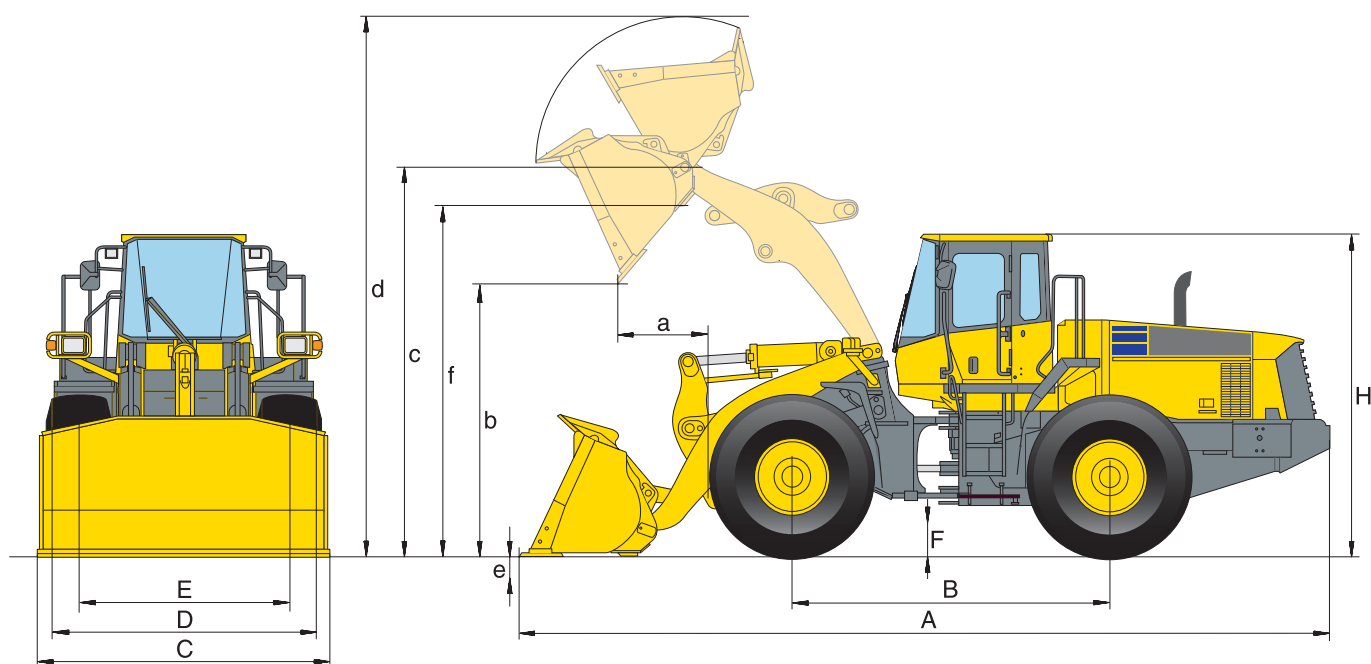
Type		A	B
Sales code		Q39	Q41
Bucket capacity (heaped, ISO 7546)	m ³	6,5	5,2
Material density	t/m ³	0,8	1,0
Bucket width	mm	3.000	3.000
Bucket weight without teeth	kg	2.100	2.420
A Reach at 45°	mm	1.830	1.775
a Height top edge of bucket	mm	6.710	6.490
b Hinge pin height	mm	5.175	5.150
c Max. loading height at 45°	mm	4.990	4.970
d Dump height at 45°	mm	4.730	4.740

Type A: dump cylinders located inside bucket

Type B: dump cylinders located outside bucket



Dimensions & Performance Figures



MEASUREMENTS AND WORKING SPECIFICATIONS

Bucket type	Universal				Stockpile			
		with teeth	with BOC	with teeth	with BOC	w/o teeth	with teeth	with BOC
Bucket capacity (heaped, ISO 7546)	m ³	3,3	3,45	3,6	3,75	3,6	3,6	3,75
Sales code		3948 C02	C03	C12	C13	C35	C36	C37
Material density	t/m ³	1,8	1,7	1,65	1,55	1,6	1,6	1,5
Bucket weight	kg	1.750	1.800	1.763	1.833	1.735	1.902	1.962
Static tipping load, straight	kg	14.765	14.630	14.725	14.550	14.645	14.425	14.255
Static tipping load, 37° articulated	kg	13.215	13.085	13.175	13.010	13.110	12.890	12.725
Break-out force hydraulic	kN	164	154	159	149	155	155	146
Lifting capability hydr. at ground level	kN	192	190	190	188	190	190	188
Operating weight (without add. counterw.)	kg	19.100	19.145	19.120	19.180	19.080	19.250	19.310
Turning radius at corner of tyres (40°)	mm	6.025	6.025	6.025	6.025	6.025	6.025	6.025
Turning radius at bucket edge (40°)	mm	6.730	6.675	6.740	6.695	6.655	6.745	6.700
a Reach at 45°	mm	1.340	1.180	1.365	1.210	1.195	1.380	1.330
b Dump height at 45°	mm	2.815	2.935	2.795	2.905	2.960	2.775	2.885
c Hinge pin height	mm	4.155	4.155	4.155	4.155	4.155	4.155	4.155
d Height top edge of bucket	mm	5.555	5.555	5.670	5.670	5.535	5.535	5.535
e Digging depth	mm	160	190	160	190	160	160	190
f Max. loading height at 45°	mm	3.860	3.860	3.860	3.860	3.860	3.860	3.860
A Overall length, bucket grounded	mm	8.690	8.515	8.735	8.560	8.485	8.760	8.585
B Wheelbase	mm	3.300	3.300	3.300	3.300	3.300	3.300	3.300
C Bucket width	mm	2.990	3.000	2.990	3.000	2.990	2.990	3.000
D Width over tyres	mm	2.885	2.885	2.885	2.885	2.885	2.885	2.885
E Track width	mm	2.280	2.280	2.280	2.280	2.280	2.280	2.280
F Ground clearance	mm	450	450	450	450	450	450	450
H Overall height	mm	3.390	3.390	3.390	3.390	3.390	3.390	3.390

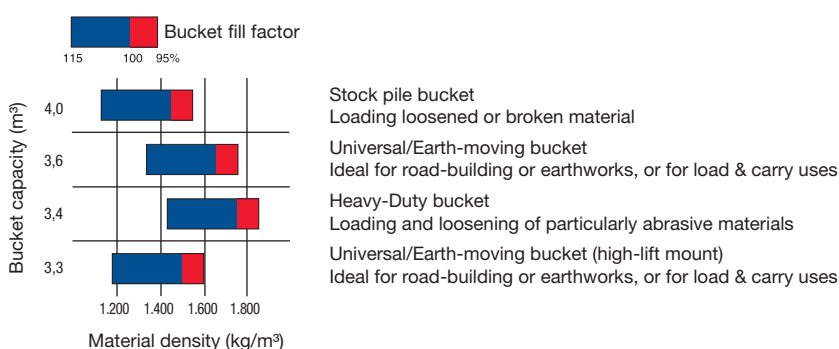
All measurements with tyres 23.5 R25.

Details of dumping heights and reach to cutting edge or bolt-on cutting edge (BOC) or teeth



CHANGE IN DATA CAUSED BY:

	Add. counterweight (rear)	Add. counterweight (sides)	23.5 R25 XLD D1A L4	23.5 R25 XMINE D2 L5	26.5 R25 XHA L3
Operating weight	+ 325 kg	+ 430 kg	+ 570 kg	+ 720 kg	+ 600
Static tipping load, straight	+ 815 kg	+ 855 kg	+ 425 kg	+ 535 kg	+ 445
Static tipping load, 37° articulated	+ 710 kg	+ 765 kg	+ 385 kg	+ 485 kg	+ 405
Overall length, bucket grounded	+ 140 mm	-	-	-	-
Reach at 45°	-	-	- 30 mm	- 25 mm	- 65 mm
Dump height at 45°	-	-	+ 35 mm	+ 45 mm	+ 55 mm
Width over tyres	-	-	+ 40 mm	+ 35 mm	- 10 mm
Overall height	-	-	+ 35 mm	+ 45 mm	+ 55 mm



TYPICAL MATERIAL DENSITY – LOOSE (IN kg/m³)

Stockpile ¹			Earthmoving		Heavy Duty		Universal (High-lift) ²
w/o teeth	with teeth	with BOC	with teeth	with BOC	with teeth	with BOC	w/o teeth
4,0	4,0	4,2	3,4	3,55	3,4	3,5	3,3
C45	C46	C47	C42	C43	C29	C30	C01
1,65	1,6	1,55	1,7	1,6	1,7	1,6	1,5
1.902	2.068	2.124	1.748	1.808	1.980	2.040	1.580
15.805	15.585	15.570	14.660	14.475	14.415	14.235	13.135
14.120	13.900	13.740	13.115	12.945	12.870	12.700	11.700
149	149	141	154	143	164	154	157
187	187	186	192	190	191	190	164
20.175	20.340	20.395	19.905	19.155	19.325	19.390	20.010
6.025	6.025	6.025	6.025	6.025	6.025	6.025	6.025
6.680	6.765	6.720	6.730	6.685	6.725	6.680	6.880
1.170	1.355	1.200	1.345	1.195	1.335	1.180	1.255
2.975	2.790	2.900	2.810	2.920	2.825	2.935	3.500
4.155	4.155	4.155	4.155	4.155	4.155	4.155	4.645
5.770	5.770	5.770	5.535	5.535	5.535	5.535	6.045
160	160	190	160	190	160	190	205
3.860	3.860	3.860	3.860	3.860	3.860	3.860	4.345
8.680	8.955	8.780	8.710	8.535	8.690	8.515	8.950
3.300	3.300	3.300	3.300	3.300	3.300	3.300	3.300
2.990	2.990	3.000	2.990	3.000	2.990	3.000	2.990
2.875	2.875	2.875	2.885	2.885	2.885	2.885	2.885
2.280	2.280	2.280	2.280	2.280	2.280	2.280	2.280
450	450	450	450	450	450	450	450
3.445	3.445	3.445	3.390	3.390	3.390	3.390	3.390

Basalt	1.960
Bauxite, Kaolin	1.420
Earth, dry, ex store	1.510
Earth, wet, excavated	1.600
Gypsum, broken	1.810
Gypsum, crushed	1.600
Granite, broken	1.660
Limestone, broken	1.540
Limestone, crushed	1.540
Gravel, unscreened	1.930
Gravel, dry	1.510
Gravel, dry, 6-50 mm	1.690
Gravel, wet, 6-50 mm	2.020
Sand, dry, loose	1.420
Sand, damp	1.690
Sand, wet	1.840
Sand and clay, loose	1.600
Sand and gravel, dry	1.720
Sandstone	1.510
Slate	1.250
Slag, broken	1.750
Stone, crushed	1.600
Clay, natural	1.660
Clay, dry	1.480
Clay, wet	1.660
Clay and gravel, dry	1.420
Clay and gravel, wet	1.540

1) Measurements with tyres 26.5 R25 & with add. counterweight

2) with add. counterweight