

# KPRIME™ TOOTH SYSTEM

## INTRODUCING THE NEW TOOTH SYSTEM FROM MARUBENI KOMATSU LTD

- Improved penetration by up to 15%
- 10% stronger design to reduce breakage
- Pry slots on tooth for easier/quicker removal of worn parts



Your  
**No.1**  
choice for  
Excavators &  
Wheel Loaders  
of ANY make  
or model.

Contact our Parts Team now for a quote!

**Call 0845 601 5540**

or e-mail [parts@mkl.co.uk](mailto:parts@mkl.co.uk)

Marubeni

**KOMATSU**

A poor quality tooth system can negatively impact job quality, machine downtime and operator safety.



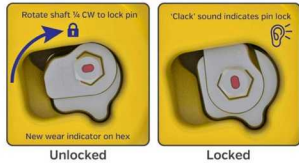
**The Kprime tooth after 300 hours. It still looks like new.**

Watch the **KPRIME** video here



The tooth system that looks after your safety!

- The pin has a metric socket for easy removal. No need to hammer—totally hammerless!
- Push out ramp on tooth to help easy removal of pin
- Audible 'clack' when pin put in locked position
- Quick and simple 1/4 turn to lock/unlock



Weight indicators cast into each part to aid safe handling and correct selection during assembly.

Kprime has 10% to 15% more usable wear material than its predecessor and up to 15% improved penetration.

- To further extend wear life, the teeth can be rotated



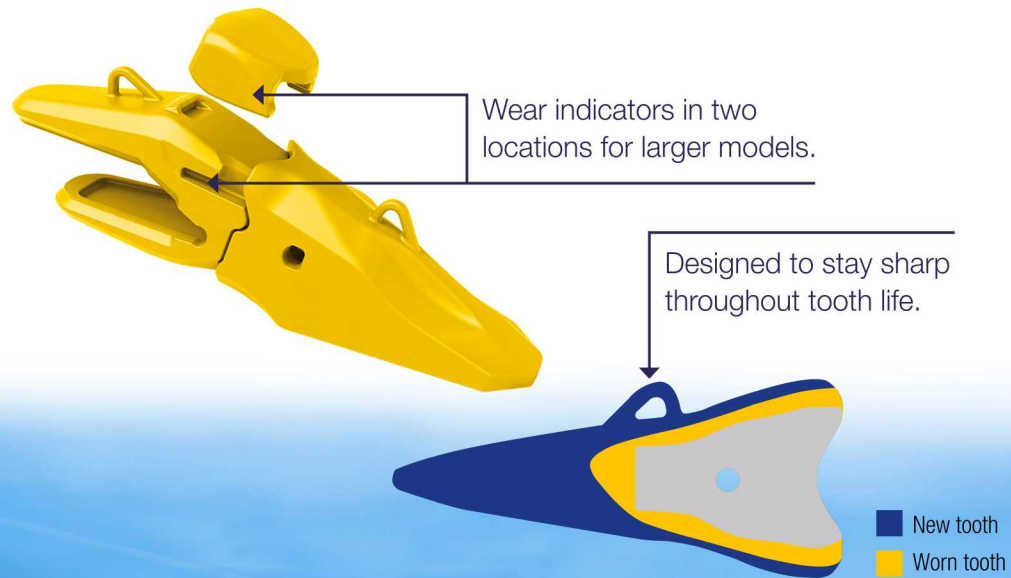
Are you removing perfectly good teeth, and un-necessarily purchasing replacements too early? Maximise cost and efficiency by checking the wear indicators, and only change teeth when its time

Contact our Parts Team now for a quote!

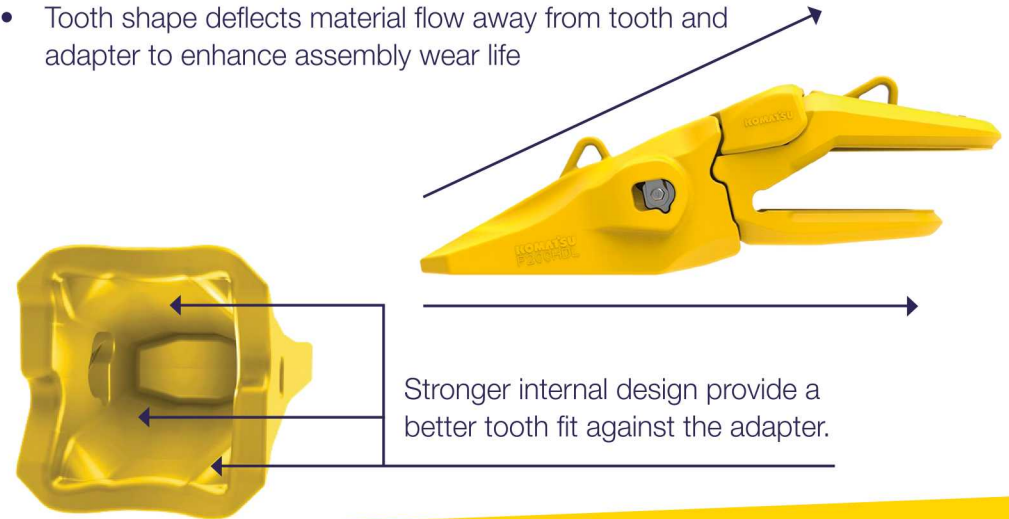
Call **0845 601 5540**

or e-mail [parts@mkl.co.uk](mailto:parts@mkl.co.uk)





- Optimised design reduces wear on adapters for a longer life
- Tighter tooth-to-adapter fit to improve stability and reliability
- Tooth shape deflects material flow away from tooth and adapter to enhance assembly wear life



Contact our Parts Team now for a quote!

Call **0845 601 5540**

or e-mail [parts@mkl.co.uk](mailto:parts@mkl.co.uk)



## Specification table for excavators:

Excavators	
Komatsu Model	Recommended by <b>KPRIME</b>
PC138	P025HDL
PC210	P025RC
PC290	P030RC
PC360	P030RC
HB365	P030RC
PC490	P050RC



Wheel Loaders	
Komatsu Model	Recommended by <b>KPRIME</b>
WA470	P025HDL
WA480	P025HDL
WA475	P025HDL- General Purpose
WA475	P030HDL- Heavy Duty
WA500	P030HDL- General Purpose
WA500	P040HDL- Heavy Duty



Contact our Parts Team now for a quote!

**Call 0845 601 5540**

or e-mail [parts@mkl.co.uk](mailto:parts@mkl.co.uk)



**A number of customers have already recognised the quality and cost-saving benefits of converting their fleet to the Kprime Tooth System.**



A new bucket fitted with non-genuine GET was worn after only 400 hours

### **Faster change-outs**

To make the changing of parts easier in the field with less risk to fitters, the fastener system has been made simple, requiring only a quarter turn to lock and unlock the pin, using only a standard metric-size socket. There are weight markings on each.

### **Tooth Style options**

To support performance in different applications and environments, Kprime teeth are available in 8 different tooth designs for excavators, and 4 for wheel loaders. A variety of adapters are available to help ensure the right fit.



Marubeni Komatsu was able to retro-fit the bucket with Kprime Teeth new heel and vertical shrouds

### **Wide compatibility**

Can be used on any Komatsu wheel loader or excavator but also available for other brand machines and equipment.

Kprime is now being fitted as standard to all brand new Komatsu excavators and wheel loaders.

### **Improved productivity**

The design of Kprime teeth have improved penetration of up to 15% compared to previous models and remain sharp over the life of the tooth 10% stronger design compared to previous models reduced adapter breakage.

**Contact our Parts Team now for a quote!**

**Call 0845 601 5540**

or e-mail [parts@mkl.co.uk](mailto:parts@mkl.co.uk)

