



The right undercarriage, whatever your application!

Making the right undercarriage choices can significantly lower the total-cost-of-ownership.

Call 0845 601 5540 | Email parts@mkl.co.uk

Marubeni

KOMATSU

PLUS UNDERCARRIAGE...

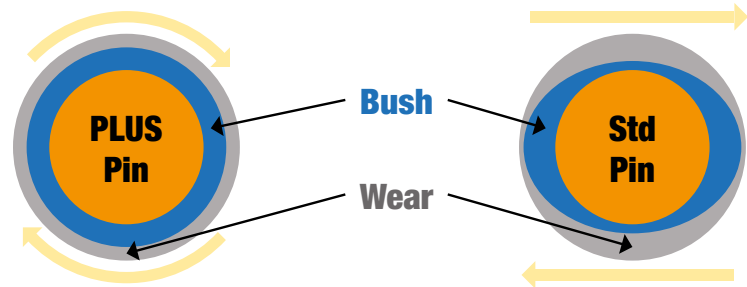
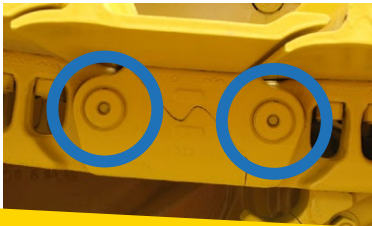
The Undercarriage System That Can Last Up To 6000 Hours!

We are committed to maximising the potential of your machine, which is why we offer the most advanced and most reliable parts to optimise performance and to reduce operating costs. The PLUS Undercarriage system is another example of this commitment.

With new rotating bushings and other key enhancements, Komatsu designed the Parallel Link Undercarriage System (PLUS) to increase wear life, reduce machine downtime and to lower repair & maintenance costs.

What makes PLUS Undercarriage special?

Rotating bushings eliminate cost and downtime by ensuring that the whole bush component surface is worn rather than just two sides.



Equal wear distribution around entire revolving & rotating bushing surface causes a slower wear ratio

Continual wear along 2 sides of the bushing surface increases wear quicker

The evenly distributed wear around the entire surface of the rotating bushing prolongs the life of the sprocket, track links and rollers with undercarriages lasting up to 6000-hours and sometimes beyond before needing to be replaced.

The rotating bush is not the only modification that PLUS Undercarriage offers.

Every component in our PLUS undercarriage has been specially designed and manufactured to give the whole system a significantly longer lifetime.



**FIND OUT
MORE ONLINE**



Sprockets - Newly designed recessed sprockets to avoid material packing which could cause too high pressure on the track link assembly seals.

Track Rollers – A new track roller design improves the track guidance, and is designed and manufactured to last as long as the rest of your PLUS undercarriage.

Longer operating life - A unique hardening process ensures the optimal balance between longer wear life and high impact resistance, giving each component the same long lifetime. That means fewer undercarriage changes and no need to replace worn parts between overhauls – saving you time and money.



PLUS

Standard



PLUS

Standard



Call 0845 601 5540 | Email parts@mkl.co.uk

Rubber Tracks vs Track Pads for Mini or Midi Excavators

What type of undercarriage suits my mini or mini excavator best?

- **Is your machine under 5-tonne?** If yes, rubber tracks may be the best option
- **Is your machine over 5-tonne?** If yes, bolt-on track pads may be the better option
- **Is the upfront cost an issue?** Pads are costlier upfront but will last significantly longer than tracks so pads will offer long-term saving

Rubber Tracks

Rubber tracks are a one-piece system, strengthened with an inner metal core design to be robust but lightweight. Marubeni-Komatsu offers rubber tracks for all makes & models, not just Komatsu.

Features and benefits

- Available in standard & heavy duty versions to cater for all working environments
- Low vibration levels for less noise and enhanced operator comfort
- Reduced mud-packing for better traction in tougher conditions
- Heavy resistance to punctures and core corrosion
- At least 2 years warranty for peace of mind

The cost-effective and easy-to-fit option.



**FIND OUT
MORE ONLINE**



Call 0845 601 5540 | Email parts@mkl.co.uk

- **What kind of work is the machine doing?** If the machine will be working in tougher environments such as demolition or groundwork, then track pads may offer a more durable option. Track pads will also allow you switch from pads to rubber tracks if the application changes.
- **How long do you intend to keep the machine?** If the intention is to move the machine on within 2 years, rubber tracks will offer the best value. However, if you intend to keep the machine for longer than 2 years, track pads will offer a longer-term value-for-money option.

Bolt-on Track Pads

Track Pads are tougher, more durable and a longer lasting solution for utility machine weighing between 5 and 9 tonnes.

The bolt-on rubber pad is secured firmly onto the steel track with four bolts. This extremely robust fixing method along with a streamlined profile prevents any movement of the rubber pad.

Features and benefits

- Easy to install or remove on site
- Ability to replace individual pads without replacing entire undercarriage
- Low noise level
- Minimal cutting up of work area
- Superior stability in harsh weather conditions

Track pads last significantly longer than rubber tracks making them the preferred solution for long-term projects.



General Construction Undercarriage (GC Tracks)

For excavators over 13-tonne

Choosing the correct undercarriage for the machine application is a proven way to reducing operational & maintenance costs. The GC Tracks are developed by Komatsu to be the cost-effective choice for low impact applications. Ideally suited to PC210 size excavators and heavier. All links & rollers are specifically engineered to the highest standard with the same wear life as traditional undercarriage, while reducing operating costs.

Applications

- Abrasive applications
- Sand/soil
- Civil construction
- General excavation



Abrasion Resistant Tracks (AR Tracks)

For bulldozers - For dozers working in abrasive soil, silica or sand.

The AR Tracks include a thoroughly heat-treated, larger bushing that gives the track a 50% longer life compared to standard tracks.

Abrasion Impact Resistant Tracks (AIR Tracks)

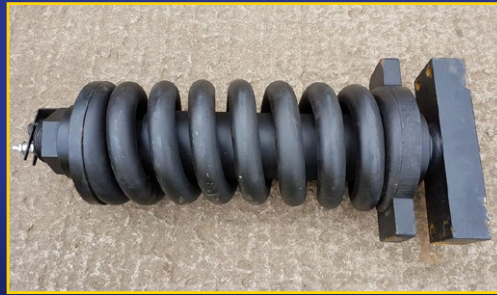
For bulldozers - For dozers working in hard, rocky applications.

The AIR Track features reinforced bushings that are more impact resistant than on a standard track, and also more flexible than the AR track.

Track Adjuster

A part of many names...
Track Adjuster, Recoil Spring and Idler Cushion.

Whatever the name, the component is essential for controlling the tension of a track, designed to absorb shock and protect vital components.

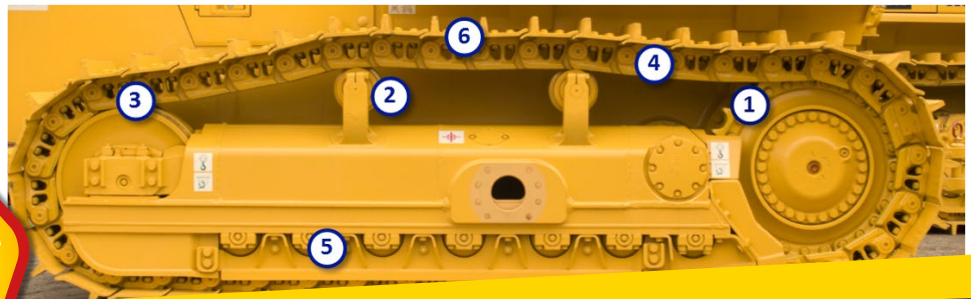


Adjustments are made by pumping or draining grease through the track adjuster valve. Incorrect adjustment will seriously impact the lifetime of the undercarriage.

Comprised of many smaller parts, Marubeni-Komatsu offers complete assemblies on many models for peace of mind and ease of ordering.

Undercarriage Components

Our complete range of undercarriage components match the high specifications of a Komatsu machine. Designed to deliver long life reliability, dedicated to optimising performance and lowering downtime.



**FIND OUT
MORE ONLINE**



Call 0845 601 5540 | Email parts@mkl.co.uk

Your Part Sales and Service Representatives:



Michael Paterson
Mobile: 07831 437 861
Email: michael.paterson@mkl.co.uk



Mike Knowles
Mobile: 07836 357 223
Email: mike.knowles@mkl.co.uk



Steve Deacon
Mobile: 07767 230 445
Email: steve.deacon@mkl.co.uk



Martin Jones
Mobile: 07836 357 215
Email: martin.jones@mkl.co.uk



Ben Poliquin
Mobile: 07881 336 250
Email: ben.poliquin@mkl.co.uk



www.marubeni-komatsu.co.uk

Call 0845 601 5540 | Email parts@mkl.co.uk