

KOMATSU

PC170LC-11

Low Ground Pressure

EU Stage IV Engine

HYDRAULIC EXCAVATOR



PC170LC-11

ENGINE POWER

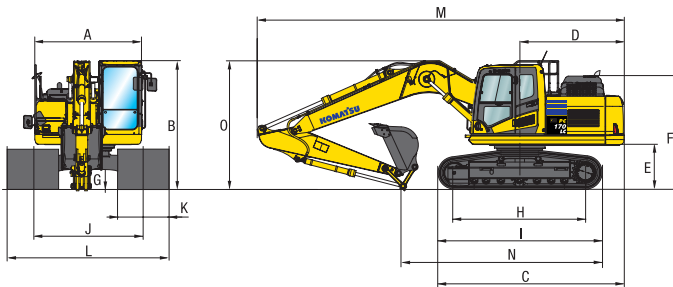
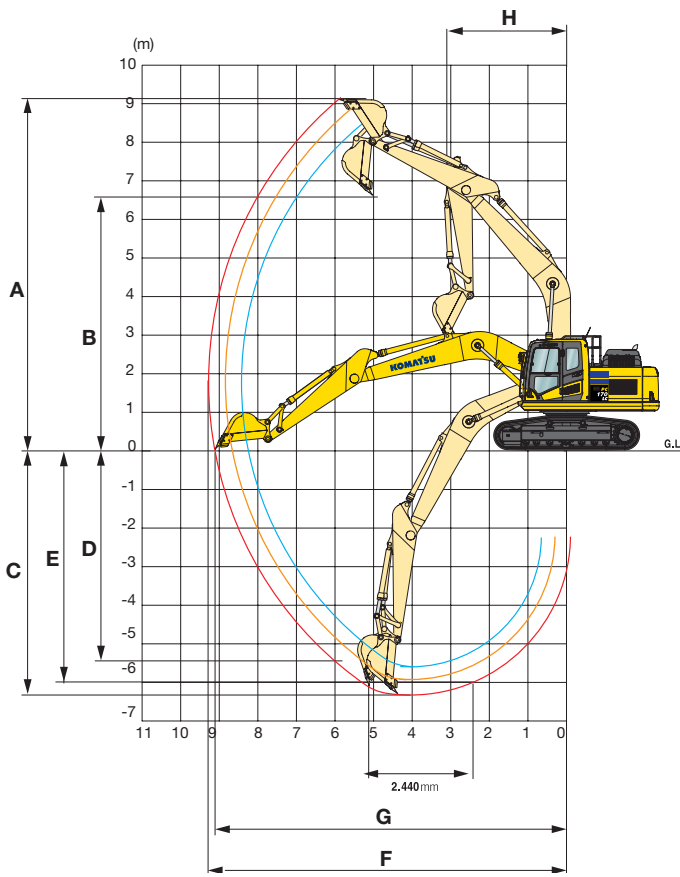
90 kW / 121 HP @ 2.100 rpm

OPERATING WEIGHT

19.500 - 22.800 kg

BUCKET CAPACITY

max. 0,94 m³



ARM LENGTH	2,25 m	2,6 m	2,9 m
A Max. digging height	8.940 mm	9.010 mm	9.160 mm
B Max. dumping height	6.300 mm	6.400 mm	6.550 mm
C Max. digging depth	5.580 mm	5.930 mm	6.220 mm
D Max. vertical wall digging depth	4.830 mm	5.010 mm	5.290 mm
E Max. digging depth of cut for 2,44 m level	5.350 mm	5.710 mm	6.020 mm
F Max. digging reach	8.680 mm	8.960 mm	9.235 mm
G Max. digging reach at ground level	8.510 mm	8.800 mm	9.075 mm
H Min. swing radius	3.040 mm	2.990 mm	2.995 mm

MACHINE DIMENSIONS	MONO BOOM
A Overall width of upper structure	2.590 mm
B Overall height of cab	3.085 mm
C Overall length of basic machine	4.835 mm
D Tail length	2.515 mm
Tail swing radius	2.545 mm
E Clearance under counterweight	1.100 mm
F Machine tail height	2.710 mm
G Ground clearance	440 mm
H Tumbler centre distance	3.845 mm
I Track length	4.640 mm
J Track gauge	2.580 mm
K Track shoe width	600, 1.000, 1.200, 1.400 mm
L Overall track width with 600 mm shoes	3.180 mm
Overall track width with 1.000 mm shoes	3.580 mm
Overall track width with 1.200 mm shoes	3.780 mm
Overall track width with 1.400 mm shoes	3.980 mm

TRANSPORT DIMENSIONS	MONO BOOM
Arm length	2,25 m 2,6 m 2,9 m
M Transport length	8.690 mm 8.690 mm 8.690 mm
N Length on ground (transport)	5.470 mm 5.100 mm 4.900 mm
O Overall height (to top of boom)	3.020 mm 3.030 mm 3.130 mm

OPERATING WEIGHT (APPR.)

Triple grouser shoes	Operating weight	Ground pressure
600 mm	19.500 kg	0,400 kg/cm ²
1.000 mm	21.000 kg	0,260 kg/cm ²
1.200 mm	21.700 kg	0,230 kg/cm ²
1.400 mm	22.300 kg	0,200 kg/cm ²

Operating weight, including mono boom, 2,6 m arm, 495 kg bucket, operator, lubricant, coolant, full fuel tank and the standard equipment.

MAX. BUCKET CAPACITY AND WEIGHT

Arm length (Mono boom)	2,25 m	2,6 m	2,9 m
Material weight up to 1,2 t/m ³	0,94 m ³ 615 kg	0,94 m ³ 615 kg	0,94 m ³ 615 kg
Material weight up to 1,5 t/m ³	0,75 m ³ 530 kg	0,75 m ³ 530 kg	0,75 m ³ 530 kg
Material weight up to 1,8 t/m ³	0,60 m ³ 495 kg	0,60 m ³ 495 kg	0,60 m ³ 495 kg

Max. capacity and weight have been calculated according to ISO 10567:2007. Please consult with your distributor for the correct selection of buckets and attachments to suit the application.



Komatsu Europe International N.V.
 Mechelsesteenweg 586
 B-1800 VILVOORDE (BELGIUM)
 Tel. +32-2-255 24 11
 Fax +32-2-252 19 81
www.komatsu.eu