

KOMATSU

PC240LC-11 **PC240NLC-11**

EU Stage V Engine

HYDRAULIC EXCAVATOR



PC240

ENGINE POWER

141 kW / 189 HP @ 2.000 rpm

OPERATING WEIGHT

PC240LC-11: 25.300 - 27.530 kg
PC240NLC-11: 24.700 - 26.630 kg

BUCKET CAPACITY

max. 1,89 m³

Walk-Around

PC240LG/NLG-11



ENGINE POWER

141 kW / 189 HP @ 2.000 rpm

OPERATING WEIGHT

PC240LC-11: 25.300 - 27.530 kg
PC240NLC-11: 24.700 - 26.630 kg

BUCKET CAPACITY

max. 1,89 m³



EXCEPTIONAL WORKABILITY AND ENVIRONMENTAL PERFORMANCE

Powerful and Environmentally Friendly

- EU Stage V engine
- Adjustable idle shutdown
- Komatsu fuel-saving technology

First-Class Comfort

- Fully air-suspended operator station
- Low-noise design
- Widescreen monitor

Maximised Efficiency

- Increased productivity
- Built-in versatility and superior productivity
- Enhanced engine management
- Improved hydraulic efficiency
- Komatsu Integrated Attachment Control (KIAC)

Safety First

- Komatsu SpaceCab™
- KomVision surround view system
- Neutral position detection system

Quality You Can Rely On

- Komatsu-quality components
- Extensive dealer support network

KOMTRAX

- Komatsu Wireless Monitoring System
- 3G mobile communications
- Integrated communication antenna
- Increased operational data and reports



A maintenance program
for Komatsu customers

Powerful and Environmentally Friendly



Higher productivity

The PC240LC/NLC-11 is quick and precise. It features a powerful Komatsu EU Stage V engine, Komatsu's Closed Center Load Sensing (CLSS) hydraulic system and first-class Komatsu comfort to provide a fast response and unrivalled productivity for its class.

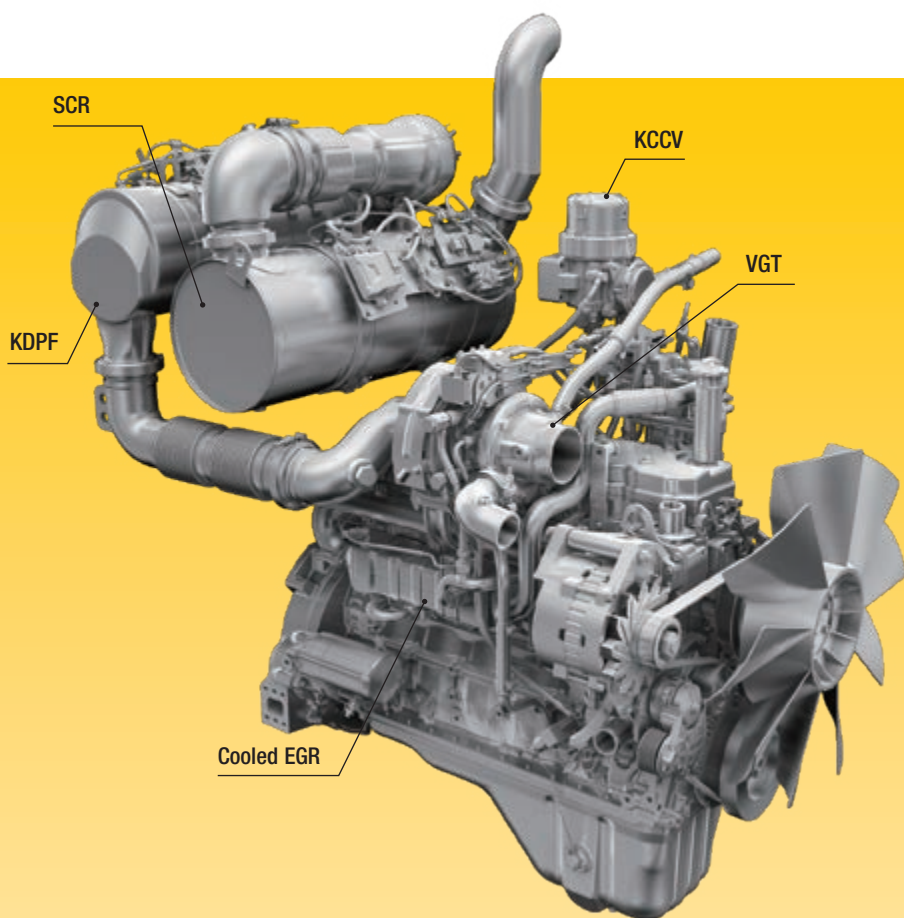
Komatsu fuel-saving technology

Fuel consumption on the PC240LC/NLC-11 is lower by up to 6%. Engine management is enhanced. The variable speed matching of the engine and hydraulic pumps guarantee efficiency and precision during single and combined movements.

Adjustable idle shutdown

The Komatsu auto idle shutdown automatically turns off the engine after it idles for a set period of time. This feature can easily be programmed from 5 to 60 minutes, to reduce unnecessary fuel consumption and exhaust emissions, and to lower operating costs. An Eco-gauge and the Eco guidance tips on the cab monitor further encourage efficient operations.

PC240LC/NLC-11



Komatsu EU Stage V

The Komatsu EU Stage V engine is productive, dependable and efficient. With ultra-low emissions, it provides a lower environmental impact and a superior performance to help reduce operating costs and lets the operator work in complete peace of mind.

Heavy-duty aftertreatment

The aftertreatment system combines a Komatsu Diesel Particulate Filter (KDPF) and Selective Catalytic Reduction (SCR). The SCR injects the correct amount of AdBlue® into the system at the proper rate to break down NOx into water (H₂O) and non-toxic nitrogen gas (N₂). NOx emissions are reduced by 80% vs. EU Stage IIIB engines.

Exhaust Gas Recirculation (EGR)

Cooled EGR is a technology well-proven in current Komatsu engines. The increased capacity of the EGR cooler now ensures very low NOx emissions and a better engine performance.

Komatsu Closed Crankcase Ventilation (KCCV)

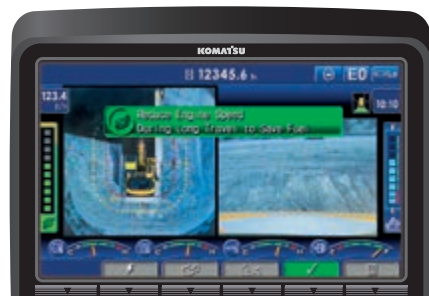
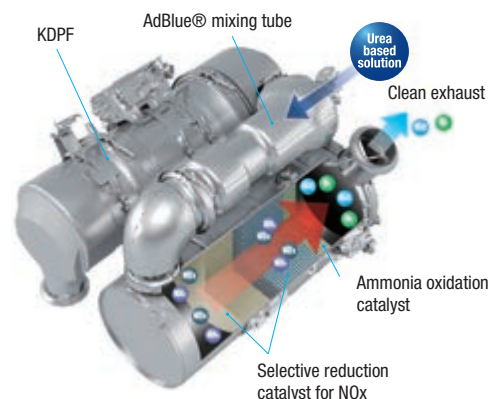
Crankcase emissions (blow-by gas) are passed through a CCV filter. The oil mist trapped in the filter is returned back to the crankcase while the filtered gas is returned to the air intake.

High-Pressure Common Rail (HPCR)

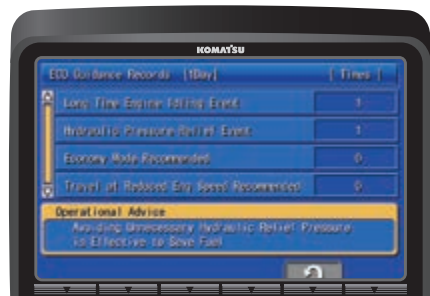
To achieve complete fuel burn and lower exhaust emissions, the heavy-duty High-Pressure Common Rail fuel injection system is computer controlled to deliver a precise quantity of pressurised fuel into the redesigned engine combustion chamber by multiple injections.

Variable Geometry Turbo (VGT)

The VGT provides optimal airflow to the engine combustion chamber under all speed and load conditions. Exhaust gas is cleaner, fuel economy is improved while machine power and performance are maintained.



Eco-gauge, Eco guidance and fuel consumption gauge



ECO guidance record



Fuel consumption history

Maximised Efficiency

Built-in versatility

Powerful and precise, the Komatsu PC240LC/NLC-11 is equipped to efficiently carry out any task your business requires. On all jobsites, big or small, for digging, trenching, landscaping or site preparation, the Komatsu hydraulic system always provides maximum productivity and control.



Two-piece boom

A wide choice of options

Two optional attachment lines are available and 15 attachment memory settings are simply customised. Combined with a standard-fit hydraulic quick coupler power circuit, it's easier than ever to switch working styles. With a choice of arms and undercarriages, you can configure the PC240LC/NLC-11 to match specific demands for transport, working envelope or duty.



Two optional hydraulic lines to mount a variety of attachments

6 working modes

The PC240LC/NLC-11 delivers the power required with the lowest fuel usage. 6 working modes are available: Power, Lifting, Breaker, Economy, Attachment Power and Attachment Economy. The operator can ideally balance the Economy mode between power and economy to match the work at hand. The oil flow delivered to hydraulic attachments is also adjustable directly on the class-leading widescreen monitor panel.



Komatsu Integrated Attachment Control (KIAC) for up to 15 tool presets for oil flow and pressure



Versatility at your fingertips: select the perfect setting for each job



PC240LC/NLC-11



First-Class Comfort

Increased comfort

In the wide Komatsu SpaceCab™, a standard air-suspended high-back seat, heated for improved comfort and with fully adjustable armrests, is the centre of a comfortable and low-fatigue working environment. High visibility and ergonomic controls further assist to maximise the operator's productivity.

Perfect operator convenience

In addition to the standard radio, the PC240LC/NLC-11 has an auxiliary input for connecting external devices and play music through the cab speakers. Two 12-volt power ports are also incorporated in the cab. Proportional controls are fitted as standard for safe and precise operation of attachments.

Low-noise design

Komatsu crawler excavators have very low external noise levels and are especially well-suited for work in confined spaces or urban areas. The optimal usage of sound insulation and of sound absorbing materials helps to make noise levels inside the cab comparable to those of an executive car.



Convenient, ergonomic and precise control: joysticks with proportional control button for attachments



Plenty of storage room, a hot and cool box, a magazine box and a cup holder



Armrest with simple height adjustment

Information & Communication Technology



Lower operating costs

Komatsu ICT contributes to the reduction of operating costs by assisting to comfortably and efficiently manage operations. It raises the level of customer satisfaction and the competitive edge of our products.

Widescreen monitor

Conveniently customisable and with a choice of 26 languages, the wide-screen monitor with simple switches and multifunction keys gives fingertip access to a large range of functions and operating info. The rear camera view and an AdBlue® level gauge are now incorporated into the default main screen.

An evolutionary interface

Helpful information is now easier than ever to find and understand with the upgraded monitor interface. An optimal main screen for the ongoing work can be selected simply by pressing the F3 key.

Operation Records (10day)	
Working Hours (Engine On)	0.2 h
Average Fuel Consumption	23.0 l/h
Actual Working Hours	0.1 h
Avg Fuel Consumption (Actual Working)	23.0 l/h
Fuel Consumption	7 l
Idling Hours	0.1 h

Quick view on the operation logs



With KomVision, various camera view options are available whilst maintaining constant "birdview" from above the machine



Operator identification function

Safety First

PC240LC/NLC-11



Optimal jobsite safety

Safety features on the Komatsu PC240LC/NLC-11 comply with the latest industry standards and work in synergy to minimise risks to people in and around the machine. A neutral detection system for travel and work equipment levers increase jobsite safety, along with a seat belt caution indicator and an audible travel alarm. Highly durable anti-slip plates – with additional high friction covering – maintain long term traction performance.



KomVision cameras



Exceptional operator protection



Hand rails and anti-slip plates

KomVision

KomVision machine visibility gives the operator a constant clear view of the safety zone around the machine. This allows the operator to focus on the work at hand even in low light conditions.

Komatsu SpaceCab™

The ROPS cab has a tubular steel frame and provides high shock absorbency, impact resistance and durability. The seat belt is well designed to keep the operator in the safety zone of the cab in the event of a rollover. Optionally the cab can be fitted with a Falling Object Protective System (FOPS) with openable front guard.

Safe maintenance

Thermal guards around high temperature areas of the engine, protected fan belt and pulleys, a pump/engine partition that prevents hydraulic oil from spraying onto the engine, and exceptionally sturdy handrails: in Komatsu tradition, the highest safety level is provided for a fast and smooth maintenance.

Quality You Can Rely On

Komatsu-quality

With the latest computer techniques and a thorough test programme, Komatsu's global know-how produces equipment to meet your highest standards. All major components of the PC240LC/NLC-11 are designed and directly manufactured by Komatsu, and essential machine functions are perfectly matched for a highly reliable and productive excavator.

Rugged design

Maximum toughness and durability are the cornerstones of Komatsu's philosophy – along with safety and top class customer service. Single piece plates and castings are used in key areas of the machine's structure for good load distribution. Highly durable rubbing strips on the underside of the arm protect the structure against impact damage.

Extensive support network

The extensive Komatsu distribution and dealer network is standing by to help keep your fleet in optimum condition. Customised servicing packages are available, with express availability of spare parts, to make sure that your Komatsu equipment continues to perform at its peak.



Durable and reliable undercarriage design for maximum protection



Cast boom foot and single piece boom plates

Easy Maintenance



Central service points

Komatsu designed the PC240LC/NLC-11 with centralised and conveniently located service points to make necessary inspections and maintenance quick and easy.

Komatsu CARE™

Komatsu CARE™ is a maintenance program that comes as standard with your new Komatsu machine. It covers factory-scheduled maintenance, performed with Komatsu Genuine parts by Komatsu-trained technicians. Depending on your machine's engine, it also offers extended coverage of the Komatsu Diesel Particulate Filter (KDPF) or the Komatsu Diesel Oxidation Catalyst (KDOC), and of the Selective Catalytic Reduction (SCR). Please contact your local Komatsu distributor for terms and conditions.



Long-life oil filters

The Komatsu Genuine hydraulic oil filter uses high-performance filtering material for long replacement intervals, which significantly reduces maintenance costs.

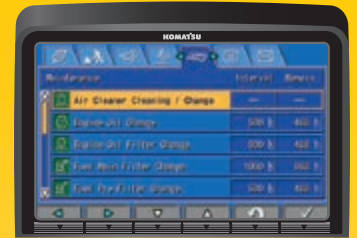


AdBlue® tank

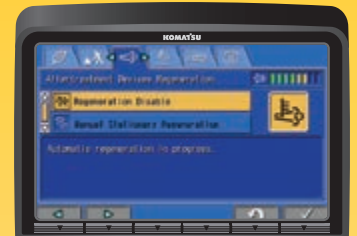
For simple access, the AdBlue® tank is installed on the front stairway.

Flexible warranty

When you purchase Komatsu equipment, you gain access to a broad range of programmes and services that have been designed to help you get the most from your investment. For example, Komatsu's Flexible Warranty Programme provides a range of extended warranty options on the machine and its components. These can be chosen to meet your individual needs and activities. This programme is designed to help reduce total operating costs.



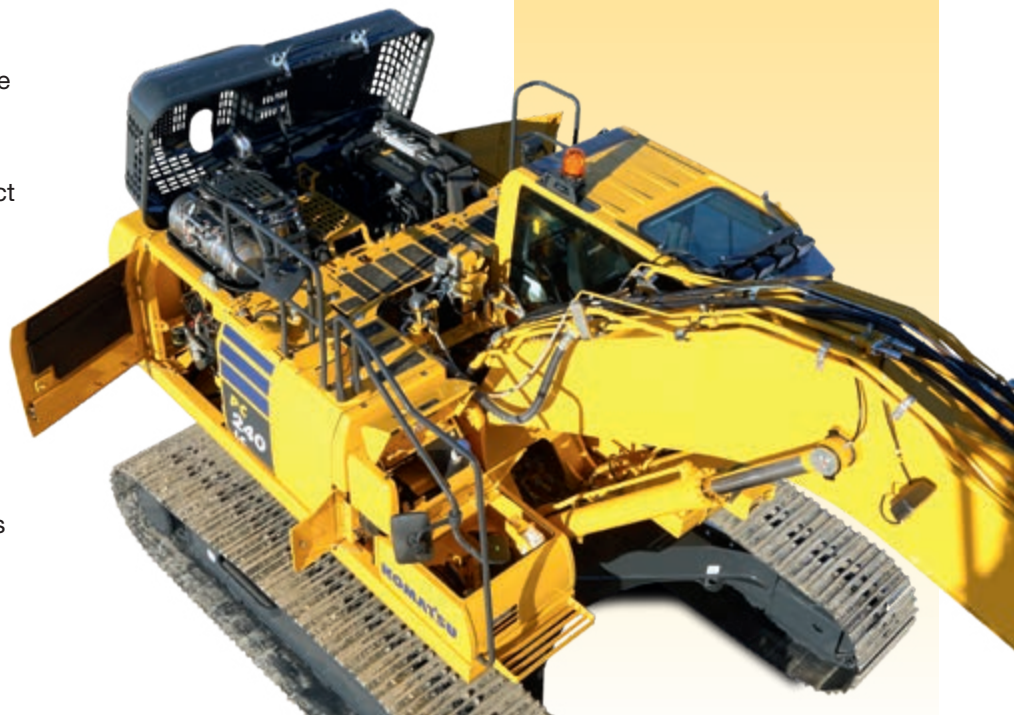
Basic maintenance screen



Aftertreatment device regeneration screen for the KDPF



AdBlue® level and refill guidance



KOMTRAX

The way to higher productivity

KOMTRAX uses the latest wireless monitoring technology. Compatible on PC, smartphone or tablet, it delivers insightful and cost saving information about your fleet and equipment, and offers a wealth of information to facilitate peak machine performance. By creating a tightly integrated web of support it allows proactive and preventive maintenance and helps to efficiently run a business.



Knowledge

You get quick answers to basic and critical questions about your machines – what they're doing, when they did it, where they're located, how they can be used more efficiently and when they need to be serviced. Performance data is relayed by wireless communication technology (Satellite, GPRS or 3G depending on model) from the machine to a computer and to the local Komatsu distributor – who's readily available for expert analysis and feedback.

Power

The detailed information that KOMTRAX puts at your fingertips 24 hours a day, 7 days a week gives the power to make better daily and long-term strategic decisions – at no extra cost. Problems can be anticipated, maintenance schedules customised, downtime minimised and machines kept where they belong: working on the jobsite.

Convenience

KOMTRAX enables convenient fleet management on the web, wherever you are. Data is analysed and packaged specifically for effortless and intuitive viewing in maps, lists, graphs and charts. You can foresee eventual maintenance issues and required spare parts, and troubleshoot a problem before Komatsu technicians arrive on site.



Specifications

ENGINE

Model	Komatsu SAA6D107E-3
Type	Common rail direct injection, water-cooled, emissionised, turbocharged, after-cooled diesel
Engine power	
at rated engine speed	2.000 rpm
ISO 14396	141 kW/189 HP
ISO 9249 (net engine power)	132 kW/177 HP
No. of cylinders	6
Bore × stroke	107 × 124 mm
Displacement	6,69 l
Air filter type	Double element type with monitor panel dust indicator and auto dust evacuator
Cooling	Suction type cooling fan with radiator fly screen
Fuel	Diesel fuel, conforming to EN590 Class 2/Grade D. Paraffinic fuel capability (HVO, GTL, BTL), conforming to EN 15940:2016

HYDRAULIC SYSTEM

Type	HydrauMind. Closed-centre system with load sensing and pressure compensation valves
Additional circuits	2 additional circuits with proportional control can be installed
Main pump	2 variable displacement piston pumps supplying boom, arm, bucket, swing and travel circuits
Maximum pump flow	2 × 237,5 l/min
Relief valve settings	
Implement	380 kg/cm ²
Travel	380 kg/cm ²
Swing	295 kg/cm ²
Pilot circuit	33 kg/cm ²

SERVICE REFILL CAPACITIES

Fuel tank	400 l
Radiator	36,0 l
Engine oil	23,1 l
Swing drive	7,2 l
Hydraulic tank	132 l
Final drive (each side)	5,0 l
AdBlue® tank	23,1 l

OPERATING WEIGHT (APPR.)

	MONO BOOM				TWO-PIECE BOOM			
	PC240LC-11		PC240NLC-11		PC240LC-11		PC240NLC-11	
Triple grouser shoes	Operating weight	Ground pressure	Operating weight	Ground pressure	Operating weight	Ground pressure	Operating weight	Ground pressure
600 mm	25.300 kg	0,51 kg/cm ²	24.700 kg	0,52 kg/cm ²	26.630 kg	0,54 kg/cm ²	26.030 kg	0,55 kg/cm ²
700 mm	25.600 kg	0,44 kg/cm ²	25.000 kg	0,45 kg/cm ²	26.930 kg	0,46 kg/cm ²	26.330 kg	0,47 kg/cm ²
800 mm	25.900 kg	0,39 kg/cm ²	25.300 kg	0,40 kg/cm ²	27.230 kg	0,41 kg/cm ²	26.630 kg	0,42 kg/cm ²
900 mm	26.200 kg	0,35 kg/cm ²	-	-	27.530 kg	0,37 kg/cm ²	-	-

Operating weight, including specified work equipment, 3,0 m arm, 735 kg bucket, operator, lubricant, coolant, full fuel tank and the standard equipment.

SWING SYSTEM

Type	Axial piston motor driving through planetary double reduction gearbox
Swing lock	Electrically actuated wet multidisc brake integrated into swing motor
Swing speed	0 - 11,7 rpm
Swing torque	75 kNm

DRIVES AND BRAKES

Steering control	2 levers with pedals giving full independent control of each track
Drive method	Hydrostatic
Travel operation	Automatic 3-speed selection
Gradeability	70%, 35°
Max. travel speeds	
Lo / Mi / Hi	3,0 / 4,1 / 5,5 km/h
Maximum drawbar pull	20.570 kg
Brake system	Hydraulically operated discs in each travel motor

UNDERCARRIAGE

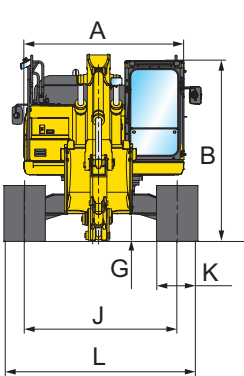
Construction	X-frame centre section with box section track frames
Track assembly	
Type	Fully sealed
Shoes (each side)	51 (PC240LC), 49 (PC240NLC)
Tension	Combined spring and hydraulic unit
Rollers	
Track rollers (each side)	10 (PC240LC), 9 (PC240NLC)
Carrier rollers (each side)	2

ENVIRONMENT

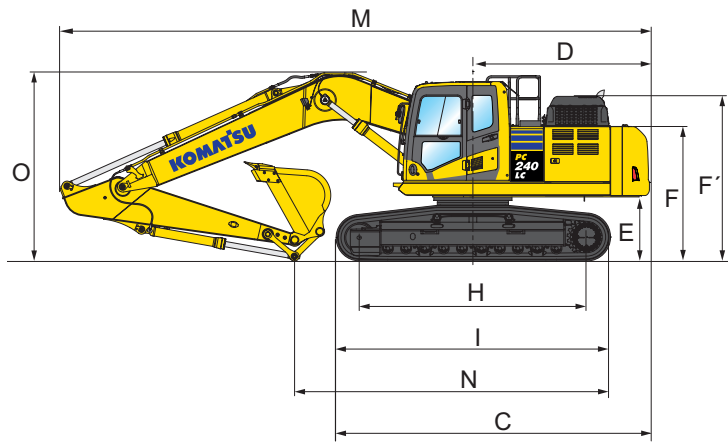
Engine emissions	Fully complies with EU Stage V exhaust emission regulations
Noise levels	
LwA external	103 dB(A) (2000/14/EC Stage II)
LpA operator ear	70 dB(A) (ISO 6396 dynamic test)
Vibration levels (EN 12096:1997)	
Hand/arm	≤ 2,5 m/s ² (uncertainty K = 0,53 m/s ²)
Body	≤ 0,5 m/s ² (uncertainty K = 0,28 m/s ²)
Contains fluorinated greenhouse gas HFC-134a (GWP 1430). Quantity of gas 0,9 kg, CO ₂ equivalent 1,29 t	

Dimensions & Performance Figures

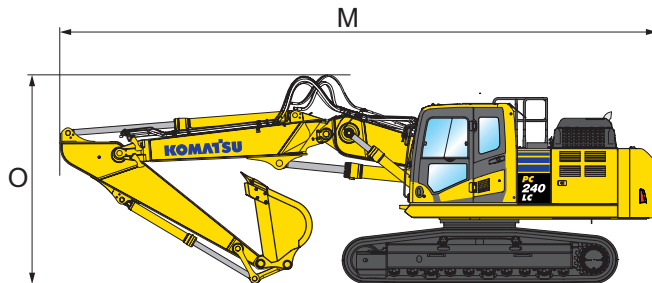
MACHINE DIMENSIONS	PC240LC-11	PC240NLC-11
A Overall width of upper structure	2.705 mm	2.705 mm
B Overall height of cab	3.055 mm	3.055 mm
C Overall length of basic machine	5.305 mm	5.210 mm
D Tail length	2.985 mm	2.985 mm
Tail swing radius	3.020 mm	3.020 mm
E Clearance under counterweight	1.100 mm	1.100 mm
F Machine tail height	2.265 mm	2.265 mm
F' Machine tail height (top of engine cover)	2.780 mm	2.780 mm
G Ground clearance	440 mm	440 mm
H Tumbler centre distance	3.845 mm	3.655 mm
I Track length	4.640 mm	4.450 mm
J Track gauge	2.580 mm	2.380 mm
K Track shoe width	600, 700, 800, 900 mm	600, 700, 800 mm
L Overall track width with 600 mm shoes	3.180 mm	2.980 mm
Overall track width with 700 mm shoes	3.280 mm	3.080 mm
Overall track width with 800 mm shoes	3.380 mm	3.180 mm
Overall track width with 900 mm shoes	3.480 mm	-



MONO BOOM



TWO-PIECE BOOM



TRANSPORT DIMENSIONS	MONO BOOM				TWO-PIECE BOOM		
Arm length	2,0 m	2,5 m	3,0 m	3,5 m	2,5 m	3,0 m	3,5 m
M Transport length	9.945 mm	10.040 mm	9.965 mm	10.010 mm	10.170 mm	10.120 mm	10.100 mm
N Length on ground (transport) PC240LC	6.600 mm	6.115 mm	5.390 mm	4.950 mm	6.795 mm	6.170 mm	5.895 mm
Length on ground (transport) PC240NLC	6.460 mm	6.020 mm	5.260 mm	4.860 mm	6.700 mm	6.700 mm	5.800 mm
O Overall height (to top of boom) (to top of hose)	3.220 mm	3.295 mm	3.185 mm	3.270 mm	3.445 mm	3.540 mm	3.680 mm

Dimensions & Performance Figures

PC240LC-11 / MAX. BUCKET CAPACITY AND WEIGHT

Arm length	MONO BOOM							
	2,0 m		2,5 m		3,0 m		3,5 m	
Material weight up to 1,2 t/m ³	1,89 m ³	1.300 kg	1,89 m ³	1.300 kg	1,89 m ³	1.300 kg	1,82 m ³	1.250 kg
Material weight up to 1,5 t/m ³	1,89 m ³	1.300 kg	1,82 m ³	1.250 kg	1,64 m ³	1.175 kg	1,54 m ³	1.125 kg
Material weight up to 1,8 t/m ³	1,67 m ³	1.175 kg	1,58 m ³	1.125 kg	1,40 m ³	1.075 kg	1,33 m ³	1.025 kg

PC240NLC-11 / MAX. BUCKET CAPACITY AND WEIGHT

Arm length	MONO BOOM							
	2,0 m		2,5 m		3,0 m		3,5 m	
Material weight up to 1,2 t/m ³	1,89 m ³	1.300 kg	1,89 m ³	1.225 kg	1,70 m ³	1.125 kg	1,58 m ³	1.100 kg
Material weight up to 1,5 t/m ³	1,70 m ³	1.175 kg	1,59 m ³	1.125 kg	1,44 m ³	1.050 kg	1,34 m ³	1.000 kg
Material weight up to 1,8 t/m ³	1,47 m ³	1.075 kg	1,38 m ³	1.025 kg	1,20 m ³	975 kg	1,16 m ³	950 kg

PC240LC-11 / MAX. BUCKET CAPACITY AND WEIGHT

Arm length	TWO-PIECE BOOM					
	2,5 m		3,0 m		3,5 m	
Material weight up to 1,2 t/m ³	2,16 m ³	1.405 kg	1,95 m ³	1.310 kg	1,83 m ³	1.255 kg
Material weight up to 1,5 t/m ³	1,83 m ³	1.255 kg	1,65 m ³	1.175 kg	1,55 m ³	1.130 kg
Material weight up to 1,8 t/m ³	1,58 m ³	1.150 kg	1,43 m ³	1.080 kg	1,34 m ³	1.040 kg

PC240NLC-11 / MAX. BUCKET CAPACITY AND WEIGHT

Arm length	TWO-PIECE BOOM					
	2,5 m		3,0 m		3,5 m	
Material weight up to 1,2 t/m ³	1,95 m ³	1.310 kg	1,74 m ³	1.215 kg	1,65 m ³	1.175 kg
Material weight up to 1,5 t/m ³	1,65 m ³	1.175 kg	1,47 m ³	1.095 kg	1,39 m ³	1.060 kg
Material weight up to 1,8 t/m ³	1,43 m ³	1.080 kg	1,27 m ³	1.010 kg	1,21 m ³	980 kg

Max. capacity and weight have been calculated according to ISO 10567:2007.

Please consult with your distributor for the correct selection of buckets and attachments to suit the application.

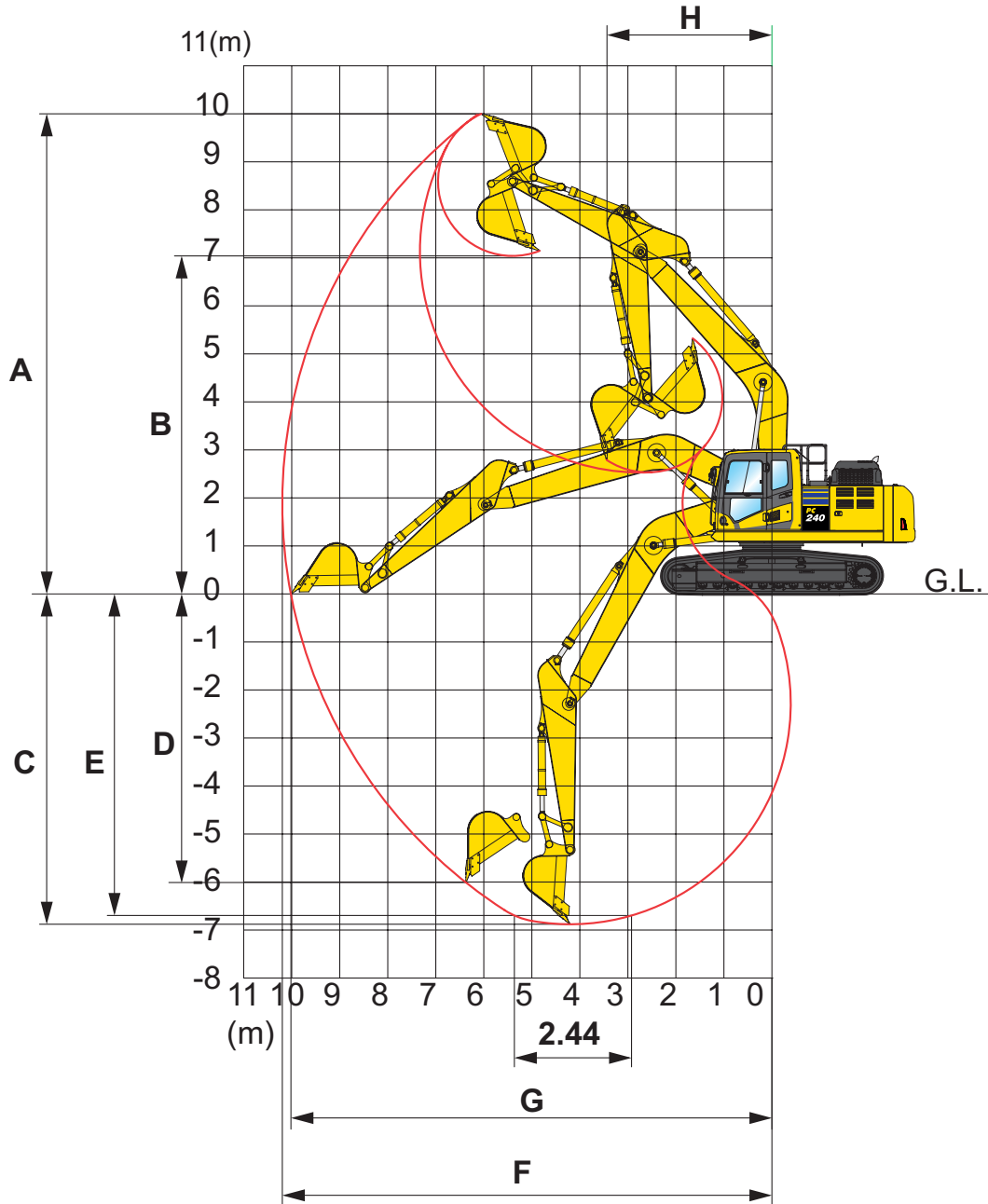
BUCKET AND ARM FORCE

Arm length	2,0 m	2,5 m	3,0 m	3,5 m
Bucket digging force	18.800 kg	18.800 kg	16.200 kg	16.200 kg
Bucket digging force at PowerMax	20.100 kg	20.100 kg	17.500 kg	17.500 kg
Arm crowd force	15.300 kg	14.100 kg	12.300 kg	10.500 kg
Arm crowd force at PowerMax	16.400 kg	15.100 kg	13.200 kg	11.200 kg



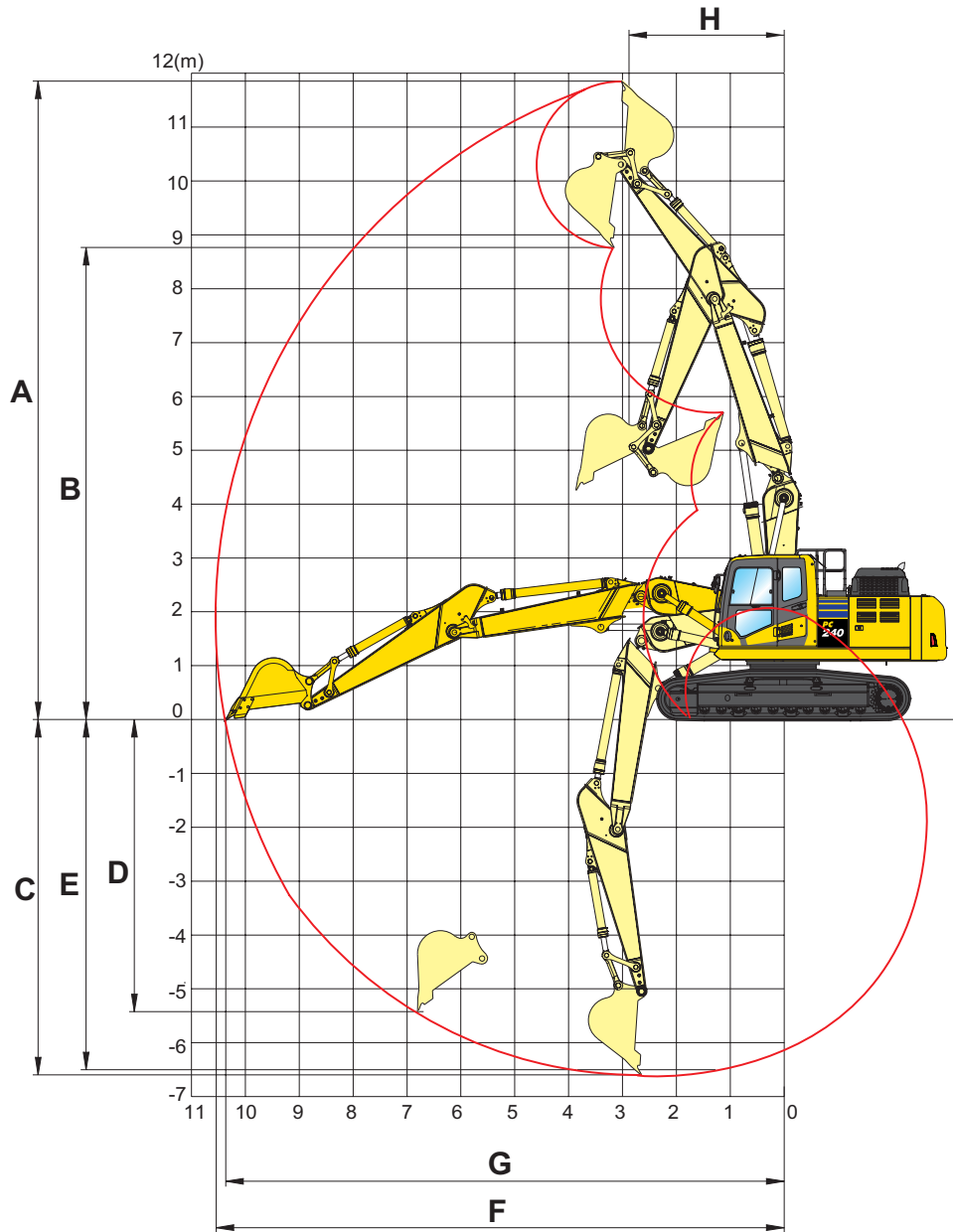
Working Range

MONO BOOM



ARM LENGTH	2,0 m	2,5 m	3,0 m	3,5 m
A Max. digging height	9.665 mm	9.790 mm	10.000 mm	10.300 mm
B Max. dumping height	6.715 mm	6.860 mm	7.035 mm	7.360 mm
C Max. digging depth	5.825 mm	6.320 mm	6.920 mm	7.320 mm
D Max. vertical wall digging depth	4.750 mm	5.130 mm	6.010 mm	6.230 mm
E Max. digging depth of cut for 2,44 m level	5.585 mm	6.100 mm	6.700 mm	7.150 mm
F Max. digging reach	9.270 mm	9.670 mm	10.180 mm	10.580 mm
G Max. digging reach at ground level	9.070 mm	9.480 mm	10.020 mm	10.420 mm
H Min. swing radius	3.300 mm	3.320 mm	3.450 mm	3.340 mm

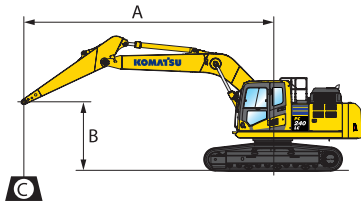
TWO-PIECE BOOM



ARM LENGTH	2,5 m	3,0 m	3,5 m
A Max. digging height	11.360 mm	11.855 mm	12.180 mm
B Max. dumping height	8.265 mm	8.745 mm	9.245 mm
C Max. digging depth	6.130 mm	6.600 mm	7.035 mm
D Max. vertical wall digging depth	4.800 mm	5.430 mm	5.765 mm
E Max. digging depth of cut for 2,44 m level	6.030 mm	6.505 mm	6.950 mm
F Max. digging reach	10.000 mm	10.550 mm	10.965 mm
G Max. digging reach at ground level	9.885 mm	10.380 mm	10.790 mm
H Min. swing radius	2.945 mm	2.875 mm	3.005 mm

Lifting Capacity

PC240LC-11 MONO BOOM



A – Reach from swing center

B – Bucket hook height

C – Lifting capacities

– Rating over front

– Rating over side

– Rating at maximum reach

Weights:

With 2,0 and 2,5 m arm:
bucket linkage and bucket
cylinder: 390 kg

With 3,0 and 3,5 m arm:
bucket linkage and bucket
cylinder: 363 kg

With 700 mm shoes

Arm length	A				9,0 m		7,5 m		6,0 m		4,5 m		3,0 m		1,5 m	
	B															

	6,0 m	kg	*3.870	*3.870		*5.520	5.100	*5.740	*5.740							
	4,5 m	kg	*3.860	*3.860		*6.380	5.000	*6.630	*6.630							
	3,0 m	kg	*3.990	3.700		*7.050	4.840	*7.950	6.690	*9.860	*9.860	*15.240	*15.240			
	1,5 m	kg	*4.250	3.580		6.890	4.660	*9.340	6.350	*12.530	9.500					
	0,0 m	kg	*4.710	3.630		6.730	4.510	9.320	6.080	*14.310	9.050	*8.510	*8.510			
	-1,5 m	kg	*5.490	3.870		6.640	4.440	9.160	5.940	14.570	8.870	*12.140	*12.140	*7.760	*7.760	
	-3,0 m	kg	6.590	4.410		6.670	4.460	9.140	5.930	14.590	8.880	*17.390	*17.390	*11.910	*11.910	
-4,5 m	kg	8.640	5.690				9.310	6.070								

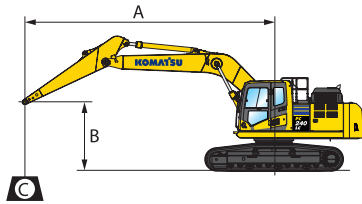
	6,0 m	kg	*4.460	*4.460		*4.990	*4.990	*6.370	*6.370							
	4,5 m	kg	*4.440	4.290		*6.870	4.970	*7.240	6.960	*8.150	*8.150					
	3,0 m	kg	*4.590	3.960		7.070	4.830	*8.520	6.650	*10.840	10.080					
	1,5 m	kg	*4.910	3.850		6.900	4.680	9.600	6.340	*13.340	9.440					
	0,0 m	kg	*5.480	3.910		6.770	4.560	9.360	6.130	*14.800	9.100	*7.560	*7.560			
	-1,5 m	kg	6.220	4.210		6.710	4.510	9.240	6.030	14.700	8.990	*12.510	*12.510	*8.160	*8.160	
	-3,0 m	kg	7.310	4.890				9.270	6.050	*14.660	9.040	*19.180	17.770	*13.240	*13.240	
-4,5 m	kg															

	6,0 m	kg	*6.610	5.530				*7.080	7.050							
	4,5 m	kg	*6.620	4.710		7.130	4.890	*7.880	6.840	*9.180	*9.180					
	3,0 m	kg	6.300	4.310		7.000	4.770	*9.090	6.550	*11.850	9.830					
	1,5 m	kg	6.130	4.180		6.860	4.640	9.510	6.270	*14.080	9.280					
	0,0 m	kg	6.310	4.270		6.760	4.550	9.310	6.090	14.750	9.030					
	-1,5 m	kg	6.930	4.660				9.250	6.030	14.710	9.000	*13.550	*13.550			
	-3,0 m	kg	8.460	5.600				9.340	6.110	*14.160	9.120	*19.730	17.970			
-4,5 m	kg															

	6,0 m	kg	*7.010	6.100				*7.810	6.980	*8.190	*8.190					
	4,5 m	kg	*6.960	5.110				*8.500	6.800	*10.170	*10.170					
	3,0 m	kg	6.800	4.650		7.000	4.780	*9.630	6.520	*12.840	9.700					
	1,5 m	kg	6.620	4.510		6.890	4.680	9.520	6.280	*14.770	9.240					
	0,0 m	kg	6.860	4.640				9.370	6.150	14.820	9.100					
	-1,5 m	kg	7.650	5.130				9.350	6.130	14.850	9.130	*13.800	*13.800			
	-3,0 m	kg														
-4,5 m	kg															

* Load is limited by hydraulic capacity rather than tipping. Ratings are based on SAE Standard No. J1097. Rated loads do not exceed 87% of hydraulic lift capacity or 75% of tipping load. Lifting capacity stated is based on lifting with bare arm. When lifting with additional equipment installed to the arm, please subtract the weight of all additional equipment from the values stated.

PC240NLC-11 MONO BOOM



- A – Reach from swing center
- B – Bucket hook height
- C – Lifting capacities

- Rating over front
- Rating over side
- Rating at maximum reach

Weights:

With 2,0 and 2,5 m arm:
bucket linkage and bucket
cylinder: 390 kg

With 3,0 and 3,5 m arm:
bucket linkage and bucket
cylinder: 363 kg

With 600 mm shoes

Arm length	A				9,0 m		7,5 m		6,0 m		4,5 m		3,0 m		1,5 m	
	B															

	6,0 m	kg	*3.870	*3.870			*5.520	4.580	*5.740	*5.740						
	4,5 m	kg	*3.860	3.560			*6.380	4.480	*6.630	6.300						
	3,0 m	kg	*3.990	3.290			6.420	4.320	*7.950	5.970	*9.860	9.050	*15.240	*15.240		
	1,5 m	kg	*4.250	3.180			6.230	4.140	8.660	5.630	*12.530	8.350				
	0,0 m	kg	*4.710	3.220			6.070	4.000	8.370	5.370	13.120	7.910	*8.510	*8.510		
	-1,5 m	kg	5.180	3.430			5.990	3.920	8.220	5.240	12.910	7.740	*12.140	*12.140	*7.760	*7.760
	-3,0 m	kg	5.950	3.910			6.010	3.950	8.200	5.220	12.920	7.750	*17.390	14.820	*11.910	*11.910
	-4,5 m	kg	7.770	5.030					8.360	5.360						

	6,0 m	kg	*4.460	4.420			*4.990	4.520	*6.370	*6.370						
	4,5 m	kg	*4.440	3.830			6.560	4.450	*7.240	6.240	*8.150	*8.150				
	3,0 m	kg	*4.590	3.530			6.410	4.320	*8.520	5.930	*10.840	8.920				
	1,5 m	kg	*4.910	3.420			6.240	4.160	8.650	5.630	*13.340	8.300				
	0,0 m	kg	5.210	3.480			6.120	4.050	8.410	5.420	13.160	7.960	*7.560	*7.560		
	-1,5 m	kg	5.630	3.730			6.060	4.000	8.300	5.320	13.030	7.860	*12.510	*12.510	*8.160	*8.160
	-3,0 m	kg	6.600	4.340					8.320	5.340	13.100	7.910	*19.180	15.150	*13.240	*13.240
	-4,5 m	kg														

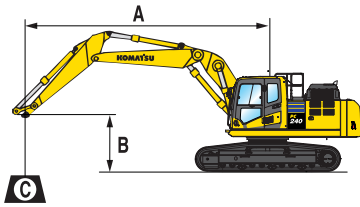
	6,0 m	kg	*6.610	4.950					*7.080	6.320						
	4,5 m	kg	6.220	4.210			6.470	4.370	*7.880	6.120	*9.180	*9.180				
	3,0 m	kg	5.710	3.840			6.340	4.260	8.870	5.830	*11.850	8.680				
	1,5 m	kg	5.550	3.710			6.200	4.130	8.570	5.560	13.370	8.140				
	0,0 m	kg	5.710	3.790			6.110	4.040	8.370	5.380	13.090	7.900				
	-1,5 m	kg	6.260	4.130					8.310	5.330	13.050	7.870	*13.550	*13.550		
	-3,0 m	kg	7.620	4.960					8.390	5.400	13.180	7.980	*19.730	15.330		
	-4,5 m	kg														

	6,0 m	kg	*7.010	5.460					*7.810	6.250	*8.190	*8.190				
	4,5 m	kg	6.770	4.570					*8.500	6.080	*10.170	9.230				
	3,0 m	kg	6.170	4.150			6.340	4.260	8.840	5.810	*12.840	8.560				
	1,5 m	kg	6.000	4.010			6.230	4.160	8.570	5.570	13.320	8.110				
	0,0 m	kg	6.200	4.120					8.420	5.440	13.150	7.970				
	-1,5 m	kg	6.910	4.560					8.400	5.420	13.180	8.000	*13.800	*13.800		
	-3,0 m	kg														
	-4,5 m	kg														

* Load is limited by hydraulic capacity rather than tipping. Ratings are based on SAE Standard No. J1097. Rated loads do not exceed 87% of hydraulic lift capacity or 75% of tipping load. Lifting capacity stated is based on lifting with bare arm. When lifting with additional equipment installed to the arm, please subtract the weight of all additional equipment from the values stated.

Lifting Capacity

PC240LC-11 TWO-PIECE BOOM



- A – Reach from swing center
- B – Bucket hook height
- C – Lifting capacities

- Rating over front
- Rating over side
- Rating at maximum reach

Weights:

With 2,5 m arm: bucket linkage and bucket cylinder: 390 kg

With 3,0 and 3,5 m arm: bucket linkage and bucket cylinder: 363 kg

With 700 mm shoes

Arm length	A				9,0 m		7,5 m		6,0 m		4,5 m		3,0 m		1,5 m	
	B															

	7,5 m	kg	*4.000	*4.000			*4.250	*4.250	*6.450	*6.450						
	6,0 m	kg	*3.750	*3.750			*6.300	4.900	*6.750	*6.750	*6.300	*6.300				
	4,5 m	kg	*3.700	3.500			*6.950	4.750	*7.650	6.750	*8.200	*8.200	*7.950	*7.950		
	3,0 m	kg	*3.750	3.250			6.850	4.600	*8.750	6.350	*11.200	9.700				
	1,5 m	kg	*3.900	3.200			6.650	4.400	9.300	6.000	*13.200	8.950				
	0 m	kg	*4.200	3.250			6.500	4.250	9.000	5.700	14.300	8.500				
	-1,5 m	kg	*4.700	3.450			6.450	3.850	8.850	5.600	14.150	8.400	*9.500	*9.500		
	-3,0 m	kg					6.500	3.900	8.900	5.650	*13.700	8.450				

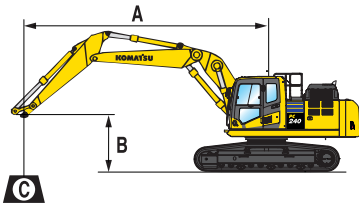
	7,5 m	kg	*4.650	*4.650					*7.200	7.000	*7.350	*7.350				
	6,0 m	kg	*4.350	4.300			6.600	4.800	*7.400	6.900	*7.550	*7.550				
	4,5 m	kg	*4.250	3.750			7.000	4.750	*8.150	6.650	*9.750	*9.750				
	3,0 m	kg	*4.300	3.500			6.850	4.550	*9.250	6.300	*12.050	9.550				
	1,5 m	kg	*4.500	3.450			6.650	4.400	9.300	6.000	*13.800	8.900				
	0 m	kg	*4.850	3.500			6.550	4.300	9.050	5.750	14.350	8.600				
	-1,5 m	kg	*5.450	3.750			6.500	3.900	8.950	5.700	14.300	8.550	*9.650	*9.650		
	-3,0 m	kg							9.050	5.750	*13.300	8.650				

	7,5 m	kg	*7.050	6.250					*7.950	6.800	*8.200	*8.200				
	6,0 m	kg	*6.550	4.800					*7.950	6.750	*8.900	*8.900				
	4,5 m	kg	6.200	4.150			6.950	4.650	*8.700	6.500	*10.650	10.100				
	3,0 m	kg	5.750	3.850			6.800	4.500	9.500	6.200	*12.850	9.300				
	1,5 m	kg	5.600	3.750			6.650	4.400	9.200	5.900						
	0 m	kg	5.750	3.850			6.550	4.300	9.000	5.750	14.300	8.550				
	-1,5 m	kg	6.350	4.200			6.550	3.900	9.000	5.700	*14.150	8.600				
	-3,0 m	kg														

* Load is limited by hydraulic capacity rather than tipping. Ratings are based on SAE Standard No. J1097. Rated loads do not exceed 87% of hydraulic lift capacity or 75% of tipping load. Lifting capacity stated is based on lifting with bare arm. When lifting with additional equipment installed to the arm, please subtract the weight of all additional equipment from the values stated.

PC240LC/NLG-11

PC240NLC-11 TWO-PIECE BOOM



- A – Reach from swing center
- B – Bucket hook height
- C – Lifting capacities

- Rating over front
- Rating over side
- Rating at maximum reach

Weights:

With 2,5 m arm: bucket linkage and bucket cylinder: 390 kg

With 3,0 and 3,5 m arm: bucket linkage and bucket cylinder: 363 kg

With 700 mm shoes

Arm length	A		⊗		9,0 m		7,5 m		6,0 m		4,5 m		3,0 m		1,5 m	
	B															

	7,5 m	kg	*4.000	*4.000		*4.250	*4.250	*6.450	6.400							
	6,0 m	kg	*3.750	3.500		*6.300	4.350	*6.750	6.250	*6.300	*6.300					
	4,5 m	kg	*3.700	3.100		6.400	4.250	*7.650	6.000	*8.200	*8.200	*7.950	*7.950			
	3,0 m	kg	*3.750	2.850		6.200	4.050	8.750	5.600	*11.200	8.550					
	1,5 m	kg	*3.900	2.800		6.000	3.850	8.350	5.250	12.950	7.800					
	0 m	kg	*4.200	2.850		5.850	3.700	8.050	5.000	12.600	7.400					
	-1,5 m	kg	*4.700	3.050		5.750	3.300	7.900	4.900	12.450	7.250	*9.500	*9.500			
	-3,0 m	kg				5.800	3.350	7.950	4.900	12.550	7.350					

	7,5 m	kg	*4.650	*4.650				*7.200	6.250	*7.350	*7.350					
	6,0 m	kg	*4.350	3.800		6.450	4.300	*7.400	6.200	*7.550	*7.550					
	4,5 m	kg	*4.250	3.350		6.350	4.200	*8.150	5.900	*9.750	9.200					
	3,0 m	kg	*4.300	3.100		6.200	4.050	8.700	5.600	*12.050	8.400					
	1,5 m	kg	*4.500	3.000		6.000	3.900	8.350	5.250	12.900	7.750					
	0 m	kg	4.750	3.100		5.900	3.800	8.100	5.050	12.700	7.450					
	-1,5 m	kg	5.150	3.300		5.850	3.750	8.000	5.000	12.650	7.400	*9.650	*9.650			
	-3,0 m	kg						8.100	5.050	12.800	7.500					

	7,5 m	kg	*7.050	5.550				*7.950	6.050	*8.200	*8.200					
	6,0 m	kg	6.500	4.250				*7.950	6.050	*8.900	*8.900					
	4,5 m	kg	5.600	3.650		6.250	4.100	*8.700	5.800	*10.650	8.900					
	3,0 m	kg	5.150	3.400		6.100	4.000	8.550	5.450	*12.850	8.150					
	1,5 m	kg	5.050	3.300		5.950	3.850	8.250	5.200							
	0 m	kg	5.200	3.350		5.900	3.800	8.050	5.050	12.650	7.400					
	-1,5 m	kg	5.700	3.700		5.900	3.470	8.050	5.000	12.650	7.450					
	-3,0 m	kg														

* Load is limited by hydraulic capacity rather than tipping. Ratings are based on SAE Standard No. J1097. Rated loads do not exceed 87% of hydraulic lift capacity or 75% of tipping load. Lifting capacity stated is based on lifting with bare arm. When lifting with additional equipment installed to the arm, please subtract the weight of all additional equipment from the values stated.

Standard and Optional Equipment

ENGINE

Komatsu SAA6D107E-3 turbocharged common rail direct injection diesel engine	●
EU Stage V compliant	●
Suction type cooling fan with radiator fly screen	●
Automatic engine warm-up system	●
Engine overheat prevention system	●
Fuel control dial	●
Auto-deceleration function	●
Adjustable idle shutdown	●
Engine key stop	●
Engine ignition can be password secured on request	●
Alternator 24 V/90 A	●
Starter motor 24 V/5,5 kW	●
Batteries 2 × 12 V/180 Ah	●

HYDRAULIC SYSTEM

Electronic closed-centre load sensing (E-CLSS) hydraulic system (HydrauMind)	●
Pump and engine mutual control (PEMC) system	●
6-working mode selection system; power mode, economy mode, breaker mode, attachment power and attachment economy mode, and lifting mode	●
PowerMax function	●
PPC wrist control levers for arm, boom, bucket and swing, with sliding proportional control for attachments and 3 auxiliary buttons	●
Prepared for hydraulic quick-coupler	●
Additional hydraulic functions	○
Komatsu Integrated Attachment Control (KIAC)	○

DRIVES AND BRAKES

Hydrostatic, 3-speed travel system with automatic shift and planetary gear type final drives, and hydraulic travel and parking brakes	●
PPC control levers and pedals for steering and travel	●

WORK EQUIPMENT

Mono boom	○
Two-piece boom	○
Bucket linkage with lifting eye	○
2,0 m; 2,5 m; 3,0 m; 3,5 m arms	○
Komatsu buckets	○
Komatsu breakers	○

CABIN

Reinforced safety SpaceCab™; highly pressurised and tightly sealed hyper viscous mounted cab with tinted safety glass windows, large roof window with sun shade, pull-up type front window with locking device, removable lower window, front window wiper with intermittent feature, sun roller blind, cigarette lighter, ashtray, luggage shelf, floor mat	●
Heated, high-back air-suspended seat with lumbar support, console mounted height adjustable arm rests, and retractable seat belt	●
Automatic climate control system	●
12/24 Volt power supplies	●
Beverage holder and magazine rack	●
Hot and cool box	●
Radio (AM/FM)	●
Auxiliary input (MP3 jack)	●
Lower wiper	○
Rain visor (not with OPG)	○
DAB+ digital radio w. auxiliary input (MP3 jack)	○

SERVICE AND MAINTENANCE

Automatic fuel line de-aeration	●
Double element type air cleaner with dust indicator and auto dust evacuator	●
KOMTRAX – Komatsu wireless monitoring system (3G)	●
Komatsu CARE™ – a maintenance program for Komatsu customers	●
Multifunction video compatible colour monitor with Equipment Management and Monitoring System (EMMS) and efficiency guidance	●
Toolkit	●
Service points	○
Automatic greasing system	○

LED LIGHTING SYSTEM

Working lights: 2 revolving frame, 1 boom (l.h.)	●
Additional working lights (#1): 2 cab roof (front), 1 cab roof (rear), 1 boom (r.h.), 1 counterweight, beacon	○
Additional working lights (#2): 4 cab roof (front), 1 cab roof (rear), 1 boom (r.h.), 1 counterweight, 2 boom cylinders, 2 revolving frame (l.h. + r.h.), beacon	○

UNDERCARRIAGE

Track roller guards	●
Track frame under-guards	●
600, 700, 800, 900 mm triple grouser shoes	○
Full length track roller guards	○

SAFETY EQUIPMENT

KomVision surround view system	●
Electric horn	●
Overload warning device	●
Audible travel alarm	●
Boom safety valves	●
Large handrails, rear-view mirrors	●
Battery main switch	●
ROPS compliant to ISO 12117-2:2008	●
Emergency engine stop switch	●
Seat belt caution indicator	●
Neutral position detection system	●
Arm safety valve	●
OPG Level II front guard (FOPS), hinged type	○
OPG Level II top guard (FOPS)	○

OTHER EQUIPMENT

Standard counterweight	●
Remote greasing for swing circle and pins	●
Electric refuelling pump with automatic shut-off function	●
Biodegradable oil for hydraulic system	○
Customised paint	○

Further equipment on request

- standard equipment
- optional equipment

Your Komatsu partner:

KOMATSU

**Komatsu Europe
International N.V.**

Mechelsesteenweg 586
B-1800 VILVOORDE (BELGIUM)
Tel. +32-2-255 24 11
Fax +32-2-252 19 81
www.komatsu.eu

UENSS17311 01/2021

KOMATSU is a trademark of Komatsu Ltd. Japan.